

# LAFAYETTE CONCORD



TELEVISION • RADIOS  
PUBLIC ADDRESS SYSTEMS  
PARTS AND TUBES  
HIGH FIDELITY RADIO



*New  
Portable  
Television*

PAGE 5

**CHICAGO**  
901 W. JACKSON BLVD.  
229 W. MADISON ST.

**NEW YORK**  
100 SIXTH AVENUE  
542 E. FORDHAM RD.

**ATLANTA:** 265 PEACHTREE ST.  
**BOSTON:** 110 FEDERAL ST.  
**NEWARK:** 24 CENTRAL AVE.

29<sup>th</sup> YEAR OF SERVICE



*You Save*

# MONEY AND TIME

WHEN YOU SHOP FROM  
THIS CATALOG

*the economical way . . . the easy way*

## 24 HOUR SERVICE



To be sure of speedy service order from the Lafayette-Concord mail order center nearest you . . . Chicago or New York. Your merchandise will be sent on its way within 24 hours, wherever possible. Use the envelope enclosed to guarantee the fastest possible delivery.

## LOWEST PRICES



Our huge combined purchasing power, low overhead and low unit profit permit us to pass on real savings to you. Only at Lafayette-Concord—the world's largest radio supply house can you find the dependable quality items you need at the lowest possible cost.

## TECHNICAL SERVICE



You get helpful, friendly counsel on all problems—TV, radio, sound equipment, custom TV and radio at Lafayette-Concord from experienced technicians. We invite you to come in to your nearest showroom or write or call. This special Lafayette-Concord counsel is a public service that costs you nothing.



## what this seal means to you

Every item marked with the "Best-Buy" seal is a verified Lafayette-Concord best buy. Comparison shoppers checked the prices of other leading distributors and only merchandise that Lafayette-Concord sells at a lower price than competition is marked with the "Best-Buy" seal.

## EASY TIME PAYMENT PLAN

Thousands of purchases are made at Lafayette each year through our easy payment plan. A small initial sum will bring you your radio, television set, test instrument, etc. Please write for further information.

## SATISFACTION GUARANTEE 30 DAY FREE TRIAL

Every set in this catalog is guaranteed to conform with the standards of the Radio Manufacturer's Association—the highest criterion of quality and performance—and to operate exactly as described for each instrument. We pledge and guarantee that if you are not completely satisfied with any set purchased here, by mail or in person, it can be returned within 30 days for exchange, repair, or refund of purchase price.

## WHAT OTHER FOLKS SAY ABOUT LAFAYETTE-CONCORD MAIL ORDER



### SERVICEMAN:

*I buy from Lafayette-Concord because their prices are rock bottom and because they have a complete stock on hand. I know I can get what I want when I want it.*



### PURCHASING AGENT:

*My engineers usually ask for items in a hurry . . . and they're often hard-to-get items. Lafayette-Concord gets my first call because 99 times out of a hundred I can get same day service.*



### HOMEMAKER:

*I bought my first radio from Lafayette-Concord eighteen years ago. Believe it or not it's still playing fine. When my daughter got married I bought her a radio from Lafayette-Concord, by mail. The set is a beauty and I saved \$30.*

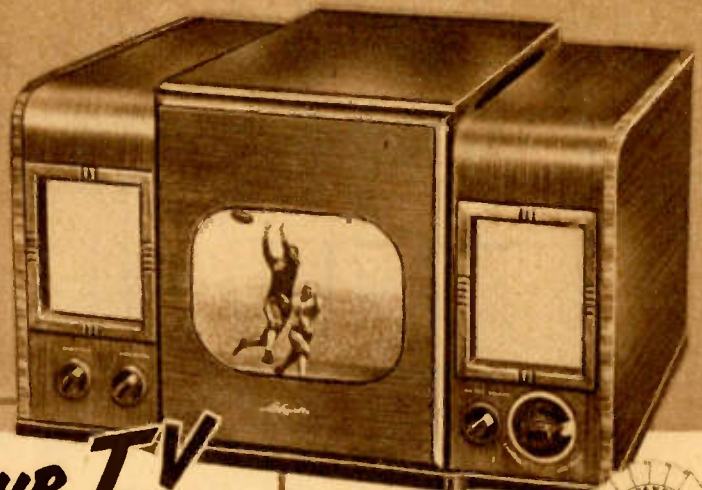
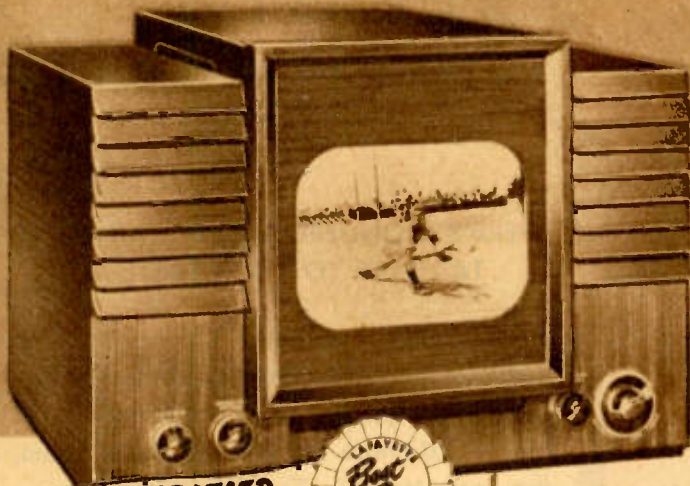


### STUDENT:

*My budget is limited and I've found from experience that when I order from Lafayette-Concord I can stretch my dollars. I build my gear with their tools and kits. I'd recommend Lafayette-Concord to anyone.*

Of necessity, due to current high costs of handling and our extreme bargains, all orders under \$2.00 will be shipped plus 25¢ for handling. On orders over \$2.00 this charge is waived. This benefits you in continued low, low Lafayette-Concord prices.





**A VERIFIED  
\$ 400. VALUE  
AT ONLY 333.**



**BUY YOUR TV  
FROM ENGINEERS  
...NOT SALESMEN**

**A VERIFIED  
\$ 350. VALUE  
AT ONLY 269.50**



**LAFAYETTE'S OWN 12 1/2" TV**

**The Famous RCA 630TS Circuit**

**Brilliant, Powerful 30-Tube Reception**

The Lafayette television experts are engineers — in their field. That is why, when you buy this fine 12 1/2" television receiver, you'll be getting a set which engineers have selected and recommended for its outstanding design and performance. It's dependability and attractive appearance will add to the pleasure and beauty of your home. You'll laugh at the amusing antics of comedians; you'll thrill to the grandeur of opera, the excitement of baseball games, the rhythm of swing bands. With this set, you can relax in a comfortable chair, for you and the entire family can see the large 12 1/2 inch screen from any place in the room. It's big enough and bright enough that you won't have to hover tightly around the set. This Lafayette Day-'N-Night television receiver uses a chassis with a large 12 1/4" tube which gives you a full 85 square inches of extra-bright picture, brilliant as movies, easy on the eyes. The modern design uses the famous RCA 630TS circuit. "Synchro-Lock" keeps the picture steady as a rock, minimizes "tearing", and simplifies station-to-station tuning. This is a quick-tuning set that is simple to operate — no fiddling with dials trying to get a picture.

Thirty tubes, including 5 rectifiers, assure you power to spare. All 13 channels are covered, with room for any added stations. Top-quality FM sound system reproduces music and speech with brilliant clarity and resonance. Smartly-styled cabinet comes in your choice of either rich mahogany veneer or lustrous walnut veneer finish. Please specify finish. Dimensions: 25 1/4 x 18 x 20 1/4". Wt. 100 lbs.

1G117. . . . . **333.00**

**LAFAYETTE'S "BEST BUY" IN 10" TV**

**The Same Top-Performing RCA 630TS Circuit**

**Beautifully-Finished, Hand-Rubbed Cabinet**

This splendid 10-inch television receiver was chosen by Lafayette engineers for its dependability, its tuning ease, its excellent FM sound system. Here's high-quality television at a real budget price! The set uses an excellent chassis with a 10-inch picture tube. You get 54 square inches of picture — big enough for your family and friends to enjoy comfortably. The famous RCA 630TS circuit incorporates 30 tubes, including 5 rectifiers, for marvelous reception. "Synchro-Lock" keeps the picture steady, reduces "tearing", and simplifies tuning. There are dual controls for picture and FM sound and horizontal and vertical controls. Full 13-channel coverage with room for added stations. The cabinet is of beautiful hand-rubbed dark mahogany veneer finish. 24 1/2 x 15 x 20". Shpg. Wt. 90 lbs.

1G112. . . . . **269.50**

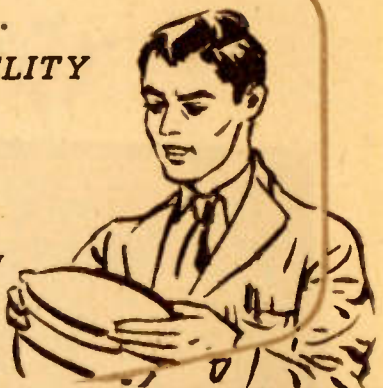
**LAFAYETTE . . .**

**Pioneer in HI-FIDELITY**

**NOW PRESENTS**

**eye fidelity  
TELEVISION**

- Engineered for the very finest in performance
- Sold direct to you for the best in dollar value



**A VERIFIED  
\$ 265. VALUE  
AT ONLY 199.50**

**10" TV AT AN UNHEARD-OF LOW PRICE  
Here's Fine Performance With Dollars Saved**

A big-screen table model television at a rock-bottom low price, yet with all the fine Lafayette features...Vernier fine tuning on all image controls...Sharp, steady pictures with plenty of brilliance and contrast...A fine mahogany cabinet polished to a lustrous glow...And a large, 10" picture tube that's big enough for 10 to 15 persons to see in the average living room. You get an excellent view day or night. No need to dim the room lights. The full-size speaker distributes true FM sound over a wide area so that all may hear with ease. But better yet, the low price can't be beat! Lafayette offers this big-screen television at a bargain price that puts it within the family budget. Uses 21 tubes including a 10BP4 picture tube and rectifiers. Cabinet size is 18 1/2 x 17 1/2 x 19 1/4". Shpg. Wt. 80 lbs.

1G119. . . . . **199.50**



# Beautiful, Beautiful, Custom Consoles

## HERE'S WONDERFUL ENTERTAINMENT TAILORED TO YOUR TASTE . . .

A Distinctive Lafayette Custom Cabinet with Matched Components Selected by You in Period or Modern . . . A Combination that makes Lafayette the First Name in Radio, the Last Word in Custom Installation . . .

Lafayette outdoes itself in this magnificent console. This superlative unit was tailor-made for a particular customer and Lafayette discovered they could offer this custom-built console at less than mass produced models. Not only do you get a custom unit, but you also save dollars. Yes, you can choose your own parts as you do in all custom-made models, and you pay less than regular model prices.

Because of its proven popularity, may we suggest a smart-value combination?

### For Matchless Tuning

THE MEISSNER FM AND LAFAYETTE AM TUNER: matched with a High Fidelity Amplifier will give you top performance on both standard and the 88-108 FM bands.

### For Wonderful Listening

THE 1201D 12" GE SPEAKER: accurately reproduces every sound...a perfect complement to the High Frequency combination.

### For Eye-Fidelity Viewing

THE 630TS 12 1/4" TELEVISION CHASSIS: As easily visible in daylight as in dark, the synch-lock keeps the picture steady as a rock, the quick tuning is so simple to use.

### For Dual-Speed Record Enjoyment

THE WEBSTER 256-1 RECORD CHANGER: Plays 12 ten inch or 10 twelve inch standard records or the new micro-groove records. Tilt-O-Matic tone arm gives proper weight balance, with automatic finger-tip control for selecting the proper tip.

Such a splendid group of matched components deserves a worthy cabinet. You have your choice of the smartly-styled modern console (above) in limed oak or the magnificent period design in mahogany finish. Either will be the focal point of beauty in your home. The cabinet size is 44x40x43 inches.

1G125 Modern console.

1G124 Period console.

**845.**

A favorite choice with those who seek even greater dollar value is the combination of the Lafayette AM-FM chassis, the 630TS 12-1/2" television chassis, a Webster dual speed record changer, and a 12" concert speaker. Of course, you still have the choice of either the modern limed oak cabinet or the period mahogany finish cabinet.

1G128 Modern console.

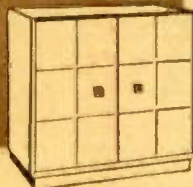
1G127 Period console.

**795.**

## Custom Installation . . .

For those who desire the finest in custom television and high-fidelity installations, tailored to their exact requirements, Lafayette has a choice selection of precision-engineered components and beautiful hardwood cabinets of modern and period design.

Lafayette maintains a staff of television and high-fidelity experts ready to share years of experience in the field. If you wish to buy or market custom installations, write the Industrial Division for special technical and merchandising services which are available to you. Or, if you are in one of our branch cities, telephone and ask for the Industrial Division.





# The Finest in Television and Radio

- BIG, BRILLIANT 12½" PICTURE
- FM-AM QUALITY RECEPTION
- FINE, HAND-RUBBED CABINETRY
- DUAL-SPEED CHANGER

You'll find it elsewhere at \$600.00  
Now it's at Lafayette for only \$399.50

This is a startling value in home entertainment — big-screen television, hour-long recorded programs, and both standard and FM radio — a great buy for your home! The rich mahogany cabinet will add to the pleasure you will have in this splendid instrument.

## Big-Screen Television

Big 12½" television...the size you can see from any place in the room, daylight or dark. It tunes all 13 channels with amazing clarity and viewing brilliance. It's quick tuning, easy to operate,...doesn't take a lot of effort to get the stations you want.

## 8-Tube AM-FM Radio

The precision-built FM-AM superheterodyne radio offers you a selection of the magnificent programs on the air today, either FM or standard radio. It has such outstanding features as automatic volume control, full range bass and treble tone control, the new permeability-tuned I.F. transformers, and a large 8-inch Alnico V PM dynamic speaker. Built-in loop antenna for AM and folded dipole antenna for FM.

## Dual-Speed Recordings

The automatic record changer, which plays ten 12-inch or twelve 10-inch records, will give you a full hour of brilliant music. The lightweight crystal tone arm and semi-permanent floating-point needle reduce record wear, yet reproduce every tone accurately.

## Luxurious cabinet

The hand-rubbed mahogany cabinet blends dignity and beauty. Rare hardwood has been fashioned into a Regency styling with handsome burnished brass escutcheon plate.

Cabinet dimensions: 21x39x27½". For 105-120 volts, 50-60 cycle AC. Wt. 165 lbs.

1G110 - With 12½" television tube . . . . . 399.50

1G120 With 10" television tube . . . . . 375.00

**3 GOOD REASONS WHY YOU  
WILL DO BETTER WITH A  
LAFAYETTE TELEVISION SET  
LOWER COSTS**

Mass production and smart engineering, combined with tremendous mass-purchasing permit Lafayette to cut your costs to the absolute, rock-bottom minimum.

## SERVICE AND DEPENDABILITY

Lafayette has a reputation for 29 years of reliable, efficient service! It's staff of television experts, speedy shipment of orders, and satisfaction-or-your-money-back guarantee make Lafayette truly worthy of your confidence.

## NEWEST DESIGNS

Tomorrow's television sets are on Lafayette's sales floor today. Lafayette is geared to rush the latest proven developments in television directly to you. It's always Lafayette for the Latest!



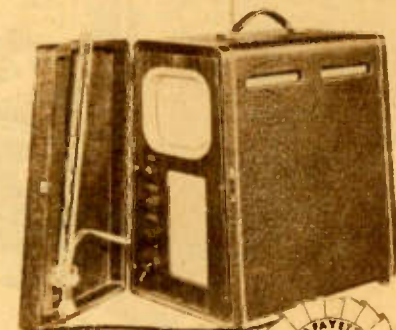
**A VERIFIED  
\$ 600. VALUE  
AT ONLY 399.50**

*and now*

## PORTABLE eye fidelity TELEVISION BY LAFAYETTE

- SETS UP IN THIRTY SECONDS!
- NOTHING ELSE TO BUY!
- NO INSTALLATION!

This is the portable television set you've been waiting for! Carry it right along with you from room to room. Or take it to camps, resorts, hotels, or wherever you are staying in a television area where there is AC current. You can just set it down, open the front cover, plug into AC current, and see television shows! No expensive installation charges, no need to get permission from your landlord for an outside antenna... the antenna is in the cover of the smartly-styled Burgundy case. The



**A VERIFIED  
\$ 200. VALUE  
AT ONLY 149.50**

brilliant viewing screen gives you 26 square inches of marvelous picture. This set works surprisingly well even in bad locations. For even better reception, detach the cover and set it on the windows sill. Set weighs only 40 lbs! There's nothing else to buy — it's complete with picture tube, antenna, and 300-ohm transmission line. Cabinet dimensions; 17x17½x11". Shpg. Wt. 55 lbs.

1G113 . . . . . 149.50

**LAFAYETTE WILL NOT BE UNDER-SOLD!**



## how to save \$50 on tv

This is the very same Hallicrafters Television set that Lafayette-Concord sold for exactly \$50 more than the current price ... and that was just a few months ago. And, you save more than just \$50 — you don't have to pay for the usual installation adjustments to start you on top entertainment. The exclusive push-button tuning makes this television receiver as easy to handle as your table model radio. It's loaded with the most desired of television features, but not loaded in weight. Only 40 pounds, it can easily be transferred to any part of your home.

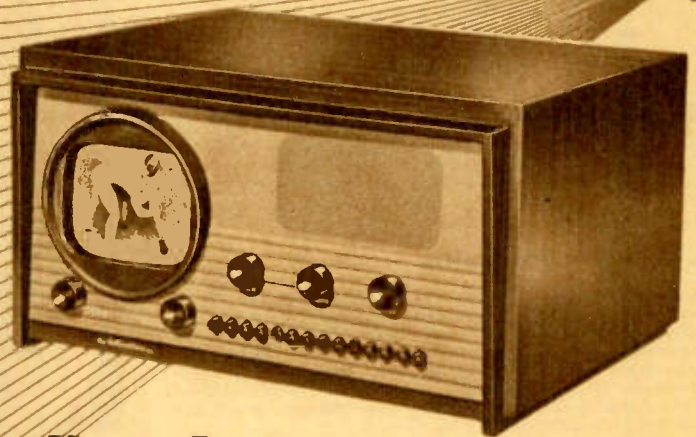
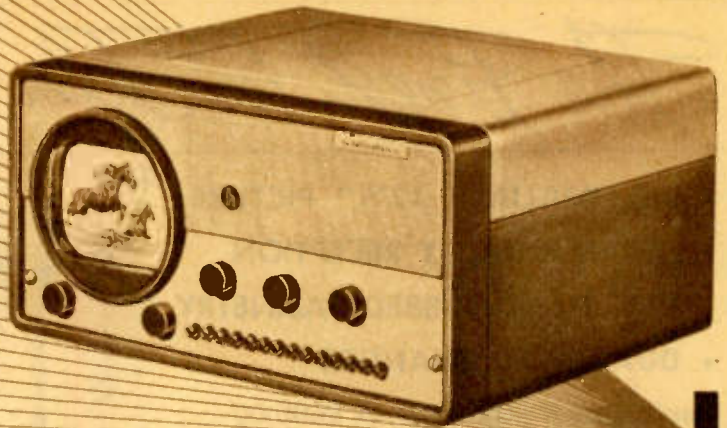
Just press a button and enjoy your favorite station or program on this full size 7 inch television picture tube. 23 square inches of moving, entertaining action! Inter-carrier modulation type FM sound system powers a large dynamic PM speaker to provide room-filling volume. Electrostatic deflection tube provides a steady, bright image with clear white against solid velvet blacks with perfect, continuing clarity despite variations in signal strength. No need to dim the room lights, either. Everyone in the family can now have many hours of top quality entertainment.

7-inch Hallicrafters Television in handsome steel cabinet. Rich silver grey finish with two-tone grey panel and polished chrome trimmed controls. Size: 20" wide, 9 1/4" high, 16" deep. Shipping Weight 45 lbs.

29G21050. . . . . 139.50

7 inch Hallicrafters Television in hand-rubbed, piano finish Mahogany veneer cabinet. Rich modern styling blends with any room. Alrodized front panel. Rubber coasters. Size: 20" wide, 9 1/4" high, 16" deep. Shpg. Wt. 45 lbs.

29G21053. . . . . 149.50



# hallicrafters

### here's 10" circular television with a dual-focus switch

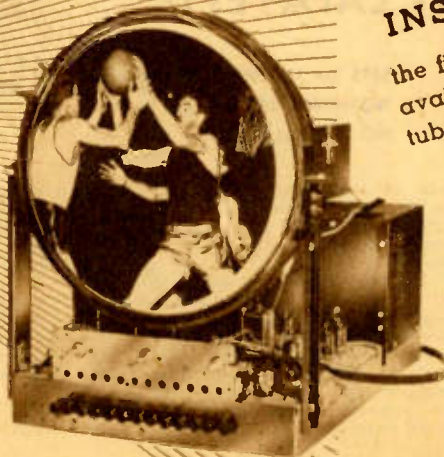
Hallicrafter has added something extra to their already wonderful television! Now — flick a switch and get your choice of picture size...a 56" wide angle view or a big 64" closeup. All the regular Hallicrafter features are there, too! The famous push-button tuning on all channels that makes your TV set as easy to adjust as a table model radio, and everything's factory-wired and tested.

The big, circular view is truly tomorrow's television! 19 tubes plus 3 rectifiers bring in excellent pictures for day or night viewing — no need to dim the room lights. Crystal-clear, static-free FM system and "locked-in" image control for flickerless, superb performance. Enjoy television at its finest — enjoy television at its lowest cost.

10" Hallicrafters Television in mahogany veneer cabinet; transparent safety shield over the picture tube covers the entire top section of the front panel. Gold design around the picture tube is on the inside of the shield. Size: 15 1/2" wide, 18-3/8" high, 20" deep. Shpg. Wt. 85 lbs.

for Dollar Saving  
**CUSTOM  
INSTALLATION**

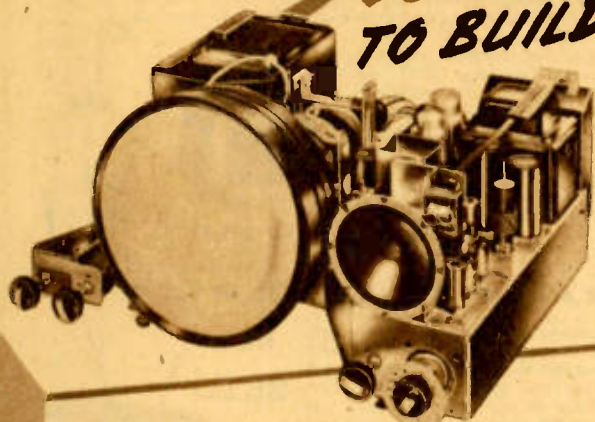
the fine chassis shown is  
available for 10" or 12"  
tube less tube ..... 169.50



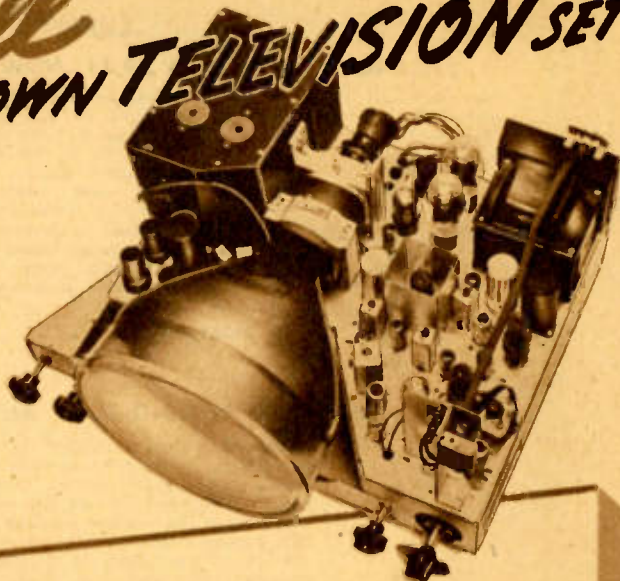
29G21056. . . . . 269.50  
CHASSIS ONLY. LESS PICTURE TUBE.  
29G21057. . . . . 169.50  
36G24684 10BP4 10" tube. . . . . 34.00  
36G24989 12" tube. . . . . 60.00  
28G21058 Bracket for 12" tube. . . . . 8.50



# It's a thrill TO BUILD YOUR OWN TELEVISION SET



and it's a  
**MONEY-SAVER  
TOO!**



## LAFAYETTE 630TS KIT—30 TUBES

- RCA Front End—Wired and Aligned
- Chassis Components Factory Assembled
- Makes From a 10-inch to a 15-inch set

If you want to save the most possible money on a high-quality television set, here's the kit to buy! After a few hours of wiring, you'll own a big-screen television receiver that takes either a 10-inch or 12-inch picture tube. This kit gives you the utmost in economy. It is just the thing for custom installations. You'll have a lot of fun building it: you'll take pride in showing it to your friends when it's completed. Because it's really a high-quality set that is still unfinished. By doing the remaining wiring yourself, you'll save more than a hundred dollars! And it won't take you a long time, either. In a series of tests, people unable to assemble other TV kits could put this one together in as little as 8 hours. The kit itself is the famous RCA 630TS circuit with an RCA front end that is already factory wired and prealigned. The thirty tubes, including five rectifiers are included. And it's easy to assemble! There's no mystery as to how to complete this television receiver. In addition to an instruction manual, you receive six, 47x22", step-by-step wiring diagrams with the wiring steps printed in a second color for complete clarity. Dual controls for picture and FM sound, and horizontal and vertical controls. Cabinet not included.

- 32G24555 — Kit less 10BP4 10" tube. . . . . **164.95**  
 32G24544 — Kit with 10BP4 10" tube. . . . . **195.50**  
 36G24684 — 10BP4 10" picture tube. . . . . **34.00**  
 36G24989 — 12" picture tube. . . . . **62.50**  
 29G24580 — Univ. bracket for mtg. 10" to 15" tubes. . . **4.65**

## PHILMORE 10" TV KIT

- Tuner, Video and IF already pre-wired and Pre-aligned at the Factory
- Chassis Components Factory Assembled

Here is one of the easiest of all television kits to build! All the really difficult work is already done for you. The chassis parts are already mounted in position. The tuner, video and sound I.F. channels are already pre-wired and pre-aligned at the factory. You need do only the remaining wiring in order to have a fine television set. Yet you save real money in completing the receiver. And you'll take pride in showing it to your friends after it's completed. Results will equal the best custom-built receiver. Tunes all 13 channels. Accommodates 10-inch and 12-inch picture tubes; with slight alteration can cope with tubes up to new 16-inch when available.

32G24559 — Less picture tube. Shpg. Wt. 70 lbs. **171.**

## ECONOMY 10" TV KIT

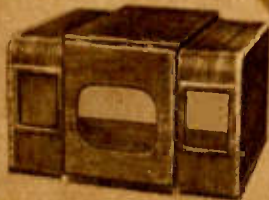
A real money saver — this is identical to the Lafayette kit at the left, but completely in kit form. Uses an RCA 2-tube front end. Parts are unmounted and must be wired. Less small hardware, the kit is ideal for experimentors, whose workshop contains the small screws, nuts and bolts used in construction. Pocket the saving resulting from mtg. your own parts!

32G24561 — less picture tube . . . . . **149.50**  
 See listing at left for picture tubes and brackets.

## CABINET FOR 10" SET

This hand-rubbed mahogany veneer cabinet is smartly-designed to match any of the above kits using a 10-inch picture tube.

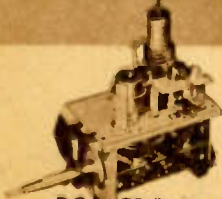
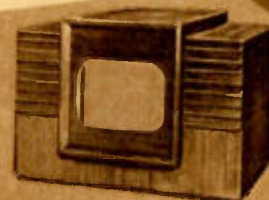
32G24543 Shpg. Wt. 20 lbs. **42.50**



## CABINET FOR 12" SET

Handsome mahogany veneer cabinet for any of the above kits using 12-inch tube. Built-in bracket safely suspends picture tube.

32G24456 — Wt. 25 lbs. **64.50**



### RCA FRONT END

Type 201E1 RF Tuner for television picture and sound. Complete with all parts mounted and aligned. With tubes. Mounts on 4" chassis. Wt. 4 lbs.

31G24437 **37.63**



### MEISSNER FRONT END

Chassis area: 5 1/4 x 3 1/4".  
 Depth below chas: 2-7/8"  
 Overall height: 5 1/4".  
 Output: 21.25 Mc Aud. IF  
 25.75 Mc Vid. IF  
 12-channel switch.

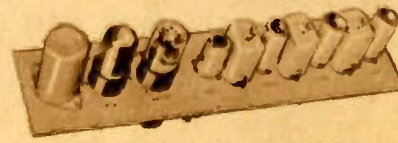
31G24400 **27.93**



### MEISSNER VIDEO STRIP

Dimensions. . . . . 3-1/8 x 13-1/8".  
 Depth below chassis: 1 1/2"  
 Height above chassis: 2-7/8".  
 Six tubes, crystal detector.  
 Intermediate Freq.: 25.75 Mc.  
 Band Width: 3.5 Mc.

31G24401 **28.91**



### MEISSNER AUDIO STRIP

Dimensions. . . . . 3-1/8 x 13-1/8".  
 Depth below chassis: 1 1/2".  
 Height above chassis: 2-7/8".  
 Intermediate Freq.: 21.25  
 Band Width: 200 kc.  
 Six tubes.

31G24402 **24.01**

LAFAYETTE WILL NOT BE UNDER-SOLD!

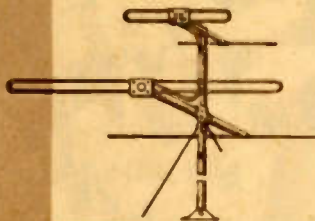


# WANT BETTER TELEVISION PICTURES?

## Lafayette "Best Buy" Antennas Make the Big Difference

**RELIANCE FM, TV WAS \$9.71 NOW 7.75**     **ALLIANCE ROTATOR FOR TURNING ANTENNA 23.49**

Receives all 13 channels of Television plus FM on one antenna. Range 44 to 108 Megacycles on LF array; 174 to 220 MC on HF array. Average gain 2.5 D. B. on LF array; 1.5 D. B. on the HF array above the tuned dipole. HF and LF arrays are electronically separated by a patented divider network, and individually rotatable for maximum signal strength in any direction. Made of lightweight tempered aluminum alloy. Shpg. Wt. 14 lbs.



28G21983 ..... **7.75**

Now - rotate your antenna for the best, the strongest signal! It's easy and inexpensive with Lafayette's new antenna rotator—and what's more - It's so easy to install. This low cost

rotator for television and FM antennae beams the antenna directly to the signal. Provides 365° rotation at 1 RPM. Instant Start-Stop or Reverse at any point. Fits up to a 1-3/8" mast. Complete with Rotator, Remote Control. Supports antennae up to 20 lbs. Less 4 wire cable needed to connect units. Wt. 12 lbs.



List \$39.95

31G21950 ..... **23.49**

### AMAZING WIND-O-LOOP ANTENNA

If the "landlord problem" is the only thing that stands between you and television pleasure - listen. Here is the ideal all-channel TV and FM antenna. It attaches to the window pane by means of two suction cups, or fits into wood with screws. Constructed of a single rectangular loop and one dipole. 25' of wire is permanently attached to antenna for convenience of installation.



List \$8.50

**YOUR COST \$5**

28G21974 ..... **5.**

### INDOOR ANTENNA-BOOSTER LISTED AT \$42.50,

The real answer to indoor antenna problems! Here is an adjustable antenna with a built-in booster that tunes all television channels plus the frequency modulation band. Provides reception as clearly and brilliantly as the more costly outdoor antenna installations. Easy-as-pie to install: just connect the two antenna leads and plug into any 115 v AC power line. Designed to work with any TV or FM set.

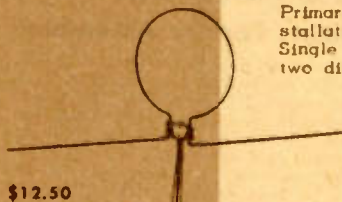
**NOW 25.50**



28G24434 ..... **25.50**

### NEW DI-LOOP OUTDOOR ANTENNA

Primarily designed for roof-top installation for all-channel TV and FM. Single loop used for high frequency, two dipoles used for low frequency receptions. When used on low frequencies, loop acts as a resonated section for the dipoles. High gain antenna, showing up to 4 times the gain of conventional antennae. 6 foot mast.



List \$12.50

**YOUR COST \$7.35**

28G21973 ..... **7.35**

### TACO DOUBLET NOW A "BEST BUY"

A rigid, all-metal, all-weather system that gives improved FM, TV, and AM reception. Broad-band and with a very good gain. Uni-directional - has high, signal-to-noise ratio. Antenna and reflector or each have two dipoles. Comes complete with 60' 300 ohm transmission line, 5 ft. mast and mounting hardware. Shpg. Wt. 5 lbs.



List \$22.50

**YOUR COST \$15.88**

28G21990 ..... **15.88**

### THE AMPHENOL BROADBAND ANTENNA

Provides improved reception on all 13 television channels. This new broadband antenna eliminates the need for individual antenna cut for each band. Added gain results in brighter pictures in the low strength areas - high directional pattern eliminates "ghosts" due to multipath pickup in high strength areas. With 5' aluminum mast, swivel mtg. bracket, 75' of Amph. 300 ohm low-loss Twin lead.



List \$27.50

**YOUR COST \$16.17**

28G22044 - Shpg. Wt. 10 lbs. . **16.17**

### RELIANCE HIGH-BAND ADAPTOR

High frequency array consisting of a hair-pin type antenna (folded dipole) with reflector. Covers 174-220 mc. May be stacked with your present low band antenna to provide all channel coverage or used individually as a high band antenna. Easily attached to any antenna by means of two adjustable straps, or may be quickly and easily mounted on separate mast. Made of tempered aluminum alloy.



List \$7.85

**YOUR COST \$3.83**

28G21994 - Shpg. Wt. 5 lbs. . . **3.83**

### TRICRAFT FM, TV ANTENNA

Designed to satisfy need for an all-purpose, all-wave antenna. Complete coverage of both television as well as the permanent FM band. Comes complete with 65 feet of 300 ohm transmission line. Universal mounting bracket at base of 8' mast for mounting. Shpg. Wt. 9 lbs.



List \$19.75

**YOUR COST \$11.61**

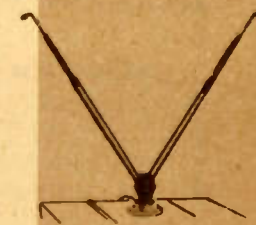
28G22036 ..... **11.61**

Auxiliary Kit. Converts above into two element ultra-high gain antenna.

28G21985 - Shpg. Wt. 5 lbs. . . **10.88**

### WASP INDOOR TELE-TENNA, NOW ONLY 4.09

A unique new table-top swivel antenna. Dipoles are fixed in free-moving swivel base for vari-channel reception. Permits both horizontal and vertical orienting, and length adjustment for desired channel tuning. It comes complete with a length of 300 ohm line, and is equipped with plugs for insertion into the jacks on the antenna. The Wasp is sturdily constructed to give years and years of completely satisfying service. Wt. 2 lbs.



28G21979 ..... **4.09**

### 10 FT. STEEL SELF-SUPPORTING TOWER

10 ft. steel, self-supporting mast. It requires no guy wires. Neat in appearance, strong and durable. When fastened down, will withstand 100 lbs. stress at top of antenna even after increasing the tower height by addition of 10 ft. pipe. Easy to install and service. Adjustable tower feet allow the base to be attached to sloping surfaces. (Less antenna)



List \$22.00

**YOUR COST \$15.50**

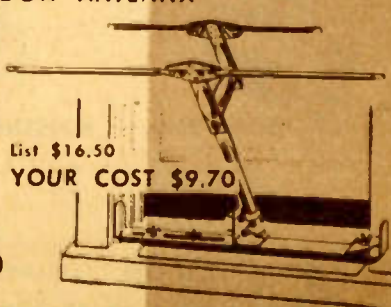
28G22079 - Shpg. Wt. 52 lbs. . . **15.50**

Five-foot Tower. (Upper portion only.) Also self-supporting.

28G22078 - Shpg. Wt. 19 lbs. . . . . **8.00**

### EASILY INSTALLED WINDOW ANTENNA

No need to worry about roof-top installations. Here is a window antenna - adjustable to fit all average size windows. And, you can install it in only 60 seconds! Place end of bkt. in the outer channels of window, tighten wing nuts and you're set for top-quality reception on all TV and FM channels. Base mount permits full adjustment of the signals from any directions.



List \$16.50

**YOUR COST \$9.70**

28G21981 Wt. 6 lbs. **9.70**



**WANT TO PERK UP SET PERFORMANCE?**

**Lafayette's Boosters, Lenses, Filters are "Best Buys"**

**NEW, POWER-PACKED ANCHOR BOOSTER**

Recommended by famous consumer research organizations - gives 2½ times more gain in signal strength across all channels! Eliminates noise and snow patterns - makes an outdoor antenna unnecessary in many cases. Features exclusive Imp. matching of its output to sets input. List Price \$35.00.



31G24438 ..... **22.50**

**VISION RESEARCH'S SUPER-DELUXE BOOSTER "Best Buy" priced at 35.**

There's plenty of added power in this superb booster. Weak signals are brought in sharper, clearer, thanks to three stages of high gain; broadband amplifiers; adjustable gain. Continuous vernier tuning makes this the most flexible and efficient booster on the market. The stable, high-gain circuit uses 3 6AK5 tubes plus a long-life selenium rectifier.

31G24440 List price \$54.50 . . . **35.**



**POWER-PACKED VISION RESEARCH BOOSTER Now a "Best Buy" at 22.50**

Finest performer in the budget-priced field. Two RF stages improve receiver immunity to Off-Channel interference. You'll find a brilliant, full-strength picture on every channel. The booster is easily attached, requires no internal connections. Shpg. Wt. 8 lbs.

31G21029 List Price 37.50. . . **22.50**



**LAFAYETTE'S OWN DOLLAR-SAVING BOOSTER "Best Buy" priced at 19.95**

Way ahead of the booster field in its dollar-value performance! Greatly increases signal strength of all 13 channels where signals are weak. Just plug into any 115 volt outlet and attach between the antenna and receiver. No internal connection are necessary. Ideal combination of economy and performance. 31G24403 List Price 35.00. . . **19.95**



**STRONGER SIGNALS WITH THE "TELEMATCH"**

Get the maximum transfer of television signals by matching the antenna to the receiver. Just fasten this Telematch to the antenna posts on the back of your set and rotate the control knob for the most satisfactory picture.

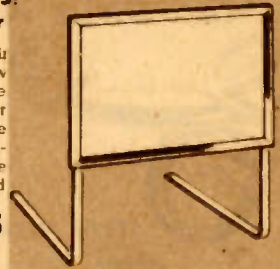
31G24439 ..... **5.59**



**NEW, NEW FLAT ENLARGING LENS! Lighter Than Ever—No Liquid Filler**

Your TV picture can be 3 times their present size with this revolutionary new magnifier. Lighter than ever - because it's plastic without liquid filler; easier to look at - because it's flat; a handsome addition to your set because it's attractively framed in mahogany. The lens may be suspended by its brackets or mounted under the set.

31G24427 8x10". . . . . **14.95**  
31G24428 9x12". . . . . 16.50  
31G24429 12x16". . . . . 21.55

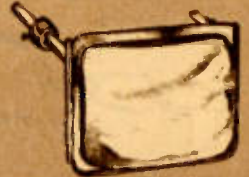


**LOW-PRICED, EASY-TO-FOCUS LENS**

**Brackets Mount Directly Into Cabinet**

Clear, brilliant lens for 10" television picture tube. Easily attached with two bushing mounts which fit into small holes drill in cabinet. Neat appearance, easily focused. With mounts.

31G24426 - Shpg. Wt. 25 lbs. . **18.95**



**EASILY-INSTALLED LENSES OF EVERY SIZE**

**Cord or Bracket Mount for Every Set**

Made of polished plastic to fit any of the table model receivers. Smaller sets give large-screen performance and a bright clear image. No installation problem. Curved brackets will fit Hallcrafters and Motorola sets.

31G24482 For 7" screens. . . . **13.45**

31G24483 For 10" screens. . . . 19.75



The lense is also available with two nylon cords which loop over the top of the set.

31G24477 For 7" screen. . . . **9.95**

31G24478 For 10" screen. . . . 13.95



**GET A REAL POLARIZED FILTER FOR ONLY 2.95**

Here is modern science's most successful anti-glare development - polarized light - applied to a television filter. Really eliminates eye-strain. There's an adhesive strip at the top for instantaneous mounting.

34G24431 - Polarized Filter for 7" screen **2.95**

34G24430 - Polarized Filter for 10" screen. . 4.75

Lunarith filters with adhesive strip supplied

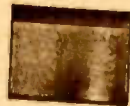
34G24488 - For a 7" screen. . . . . 59

31G24489 - For a 10" screen. . . . . 79

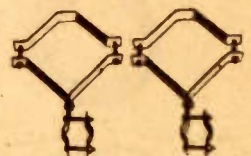
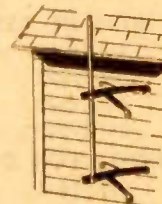
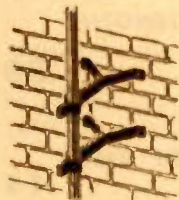
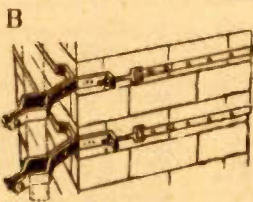
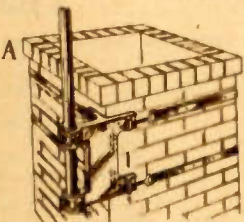
31G24490 - For a 12" screen. . . . . 1.39

Circular filter for Hallcrafters

31G24491 - for a 7" screen. . . . . 69



**ANTENNA INSTALLATION IS EASY WITH A LOW-COST LAFAYETTE MOUNT**



Try these tried and tested chimney mounting brackets. Adjustable to fit any chimney. Can be installed without tools in 5 to 10 minutes. Over 30,000 lb. tensile str.

A) Made of corrosion-resistant aluminum alloy.

B) Made of heavy plated steel

Both come complete with strapping.

28G21940 ..... **4.41**    28G22046 ..... **2.49**

Holds pole from 1" to 1½" in diameter. 6" clearance between mast and wall. Heavily plated steel. With directions and hardware.

28G21942 ..... **1.47**

Constructed of heavy galvanized steel. Clearance of 12½" from mast to wall. Holds any pole from 1" to 1½" in diameter.

28G21943 ..... **2.94**

Easily installed vent-pipe mount. Holds any size mast. Simply place over the vent pipe and tighten nuts. Heavy steel, zinc plated. Completely assembled.

28G21941 ..... **2.32**

**LAFAYETTE WILL NOT BE UNDER-SOLD!**



# GOT INSTALLATION AND REPLACEMENT PROBLEMS? Lafayette Solves 'Em All with Low Cost Components

## SELF-POWERED PHONE MAKES INSTALLATION INTERCOM



Self-powered system, wherever quick, inexpensive 2-way talking is required. Ideal when installing radio and TV antennas — the antenna itself may be used as an intercom. Provides excellent fidelity up to 25 miles.

32G14015 . . . . . **8.75**

## STEEL MIRROR MAKES TUBE ADJUSTMENT EASIER



New easy-to-use mirror that is fully adjustable for every conceivable angle. All metal, with universal joint and rubber lined spring clamp. Clamps securely to any surface — cannot mar or scratch. Compact: will fit into service kit.

31G24407 . . . . . **1.62**

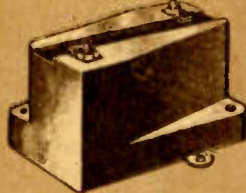
## SIG-MAX GIVES A BETTER PICTURE FOR ONLY 59c



An amazing device for improving TV reception. Produces clearer, more noise-free pictures in low signal areas on higher channels. Clips easily to lead-in line.

31G24404 Set of 3 . . . . . **.59**

## LIGHTNING ARRESTORS GUARD TV-FM CIRCUITS



First lightning arrester for TV and FM. A high-frequency, low loss unit that does not vary impedance. Unnecessary to cut transmission line or change spacing for installation. Made of low-loss plastic material. Wt. 1 lb.

28G24442 . . . . . **1.47**

## RCA LIGHTNING ARRESTORS

Specially designed to protect TV and FM receivers. Attaches to 300 ohm Twin lead without soldering or strapping. May be mounted on any indoor water pipe. Strap mtg. fits all standard pipe sizes from 1/2" to 2" diameter.

28G24443 Wt. 5 oz. . . . . **.66**

## SOLDERLESS SPLICES WITH TWIN-LEAD SPLICE



Speeds splicing without the need for twisting or soldering.

28G16954 . . . . . 10 for 1.90 . . . **.21**

## STAND-OFF INSULATORS FOR TRANSMISSION LINES



For twin lead or coaxial transmission line. With heavy No. 14 wood screw.

38G16957 — 3 1/2" long. . . 5.40 per C . **.06**

38G16960 — 7 1/2" long. . . 8.10 per C . **.09**

38G16962 — For 1" mast (1" clamp, 3/4" screw eye) . . . . . **.09**

38G16963 — For 1 1/4" mast (1 1/4" clamp, 3/4" screw eye) . . . . . **.09**

## TURNBUCKLES, ONLY 15c EACH



For taking up slack in guy wires. Made of rustproof galvanized steel.

Size open: 7-5/8", size closed: 5 1/2".

28G21939 . . . 10 for 1.32 . . . . . **.15**

## GUY WIRE IN ASSORTED LENGTHS



Six strands No. 20 galvanized steel wire.

28G21927 — 50' roll. . . . . **.39**

28G21948 — 100' roll. . . . . **.69**

28G21929 — 500' spool. . . . . **2.95**

## BANDING — FOR DOZENS OF USES



28G21947 — 12' . . . . . **.44**

28G21948 — 25' . . . . . **.84**

28G21949 — 100' . . . . . **2.95**

300 OHM  
TWIN LEAD-IN WIRE  
No. 28G17140  
100 ft. \$ 1.50  
1000 ft. 13.95

RG 59/U  
COAX CABLE  
No. 28G17117  
Per ft. \$ .05  
100 ft. 4.50

## TELEVISION REPLACEMENT PARTS

### TV POWER TRANSFORMER



AN \$8 VALUE  
AT ONLY **3.75**



Television Power Transformer.  
Rating: High voltage 2200 v at  
2 ma; filament voltages 6.3 v at 1 amp, 2.5  
v at 2 amps. Shpg. Wt. 2 1/2 lbs.

6G1501 . . . . . **3.75**

## "BEST BUYS" IN RCA COMPONENTS



### RCA TELEVISION IF AND VIDEO COIL KIT

1. Contains all coils necessary to build the picture, sound, and video circuits of a high quality television receiver. Shown below in tabular listing, RCA No. 204X1.

12N10156 . . . . . **12.94**

No.	RCA Type	No. in Kit	Description	Each
12G10157	201K1	2	Sound IF Transformer	1.35
12G10158	202K1	1	Converter Transformer	1.59
12G10159	202K2	1	1st PIX IF	1.59
12G10160	202K3	1	2nd PIX IF	1.12
12G10161	202K4	1	Cathode Trap	1.35
12G10162	203K1	1	Discriminator Transformer	1.65
12G10163	202L1	2	3rd and 4th PIX IF	.44
12G10164	203L1	1	Video Series Peaking Coil	.35
12G10165	203L2	1	Video Shunt Peaking Coil	.35
12G10166	203L3	2	Video Series Peaking Coil	.35
12G10167	203L4	2	Video Shunt Peaking Coil	.35

Deflection Yoke Type 201D1 for use with direct viewing kinescopes requiring 50° magnetic deflection, such as RCA 7DP4 and 10BP4. Performance checked to close linearity limits. Provides required retrace time when used with typical deflection circuits using RCA Horizontal output transformer 211T1, 204T3 or 204T1 and Vertical output transformer 204T2.

6G5977 . . . . . **4.41**

Horizontal Output Transformers Type 211T1 for use with deflection yoke type 201D1 and with direct viewing tubes such as 7DP4 and 10BP4. Auto-transformer primary provides voltage for pulse rectifier to supply kinescope anode potential. Filament winding for pulse rectifier is included. Secondary is tapped for connecting width control.

6G5975 . . . . . **5.59**

Focus Coil Type 202D1 for magnetically focused kinescopes having deflection angles up to 50° such as the RCA 10BP4. Large conductor size for corrosion-free operation.

6G5983 . . . . . **4.41**

Ion-trap Magnet Type 203D1. A necessity wherever kinescopes with ion-trap guns are used. Construction is fool-proof—only two coils and a padded mounting yoke. Prevents ions from bombarding the sensitive kinescope screen.

6G5984 . . . . . **3.82**

Write for full information on these and other Television components you may require.

No.	Item	Type	Each
31G24479	Mirror	201B1	88.20
31G24450	Lens	201P2	12.94
6G5976	Horizontal Output Trans.	211T2	11.17
6G5985	Horizontal Output Trans.	204T1	11.76
6G5986	Vertical Output Trans.	204T2	3.38
12G10168	Filament Choke	204L1	.18
6G5970	Horizontal Output	204T3	7.06
6G5971	Horizontal Block, OSC Trans.	208T1	2.29
6G5973	Horizontal Block, OSC Trans.	208T3	1.62
6G5972	Vertical Block, OSC Trans.	208T2	1.82
6G5980	Width Control	201R2	1.29
6G5981	Horizontal Linearity Control	201R3	.50
6G5979	Width Control	201R1	.47
6G5974	Horizontal Sync-Disc. Trans.	208T8	1.62
6G5978	Deflection Yoke	201D2	7.64
6G5982	Yoke Mounting Hood	201X1	.94



# LAFAYETTE'S WIRE RECORDER COMBINATION

IT'S A WIRE RECORDER! IT'S A RADIO!  
AND IT'S A PHONOGRAPH, TOO! ONLY 149.50

List Price 199.50—Now a "Best Buy" Value

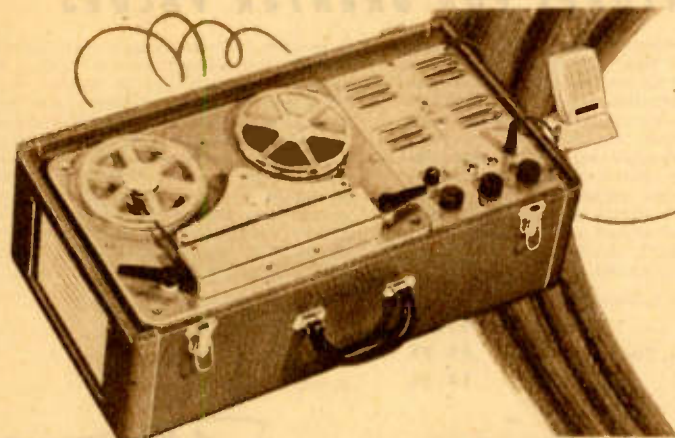
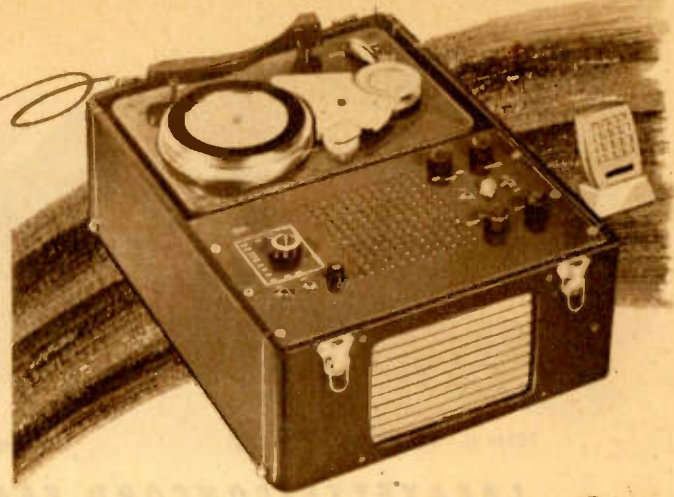
**THE WIRE RECORDER.** Records continuously for one entire hour. Automatically erases old recording as it records new material. This outfit shuts off automatically at the end of the spool both when recording and rewinding. Equipped with a neon volume indicator, variable tone control. Visual indicator provides a means for calculating the number of feet of wire that had been recorded.

**THE RADIO.** The radio contained in the Lafayette-Concord trio is the latest type superheterodyne, covering the entire broadcast band.

**THE PHONOGRAPH.** A heavily-weighted turntable, revolving at 78 RPM. Featherweight tone arm (anchors for safe carrying).

The high quality audio amplifier and PM speaker assure clear 5 watts output, provide undistorted sound. Modern portable case, covered in beautiful two-tone brown alligator-grained leatherette. Complete with Electro-Voice microphone, one 15 and one 30 minute spool of wire.

35G22611 — Shpg. Wt. 45 lbs. . . . . **149.50**



## LAFAYETTE'S "BEST BUY" TAPE RECORDER TWIN-TRACK TAPE—RECORD ON BOTH EDGES! EASY TO OPERATE—EASY THREADING SYSTEM!

List Price 179.50—Your Cost Only 127.50

Records on twin-track plastic or paper recording tape from AM or FM tuner, phono, mike, etc. through internal amplifier. 4 w. undistorted output. 5" PM speaker, speaker muting switch, pilot light.

Revolves at 78 RPM. Space provided for mounting phono pickup arm. Complete with one 30 minute reel of twin-track tape with additional empty reel. Housed in beautiful rich brown pebbled leatherette carrying case, with white trim, 21½x11½x10". Positive capstan drive gives constant speed, eliminates wows, and may be used for mounting 78 RPM turntable.

35G22612 — Shpg. Wt. 38 lbs. . . . . **127.50**

35G16320 — 1200 ft. reel plastic tape. . . . . 3.10

## NEW WEBSTER 180-1 HI-FI WIRE RECORDER NEW ELAPSED-TIME INDICATOR TIMES RECORDINGS REMOVABLE TAKE-UP DRUM MAKES REWIND EASY

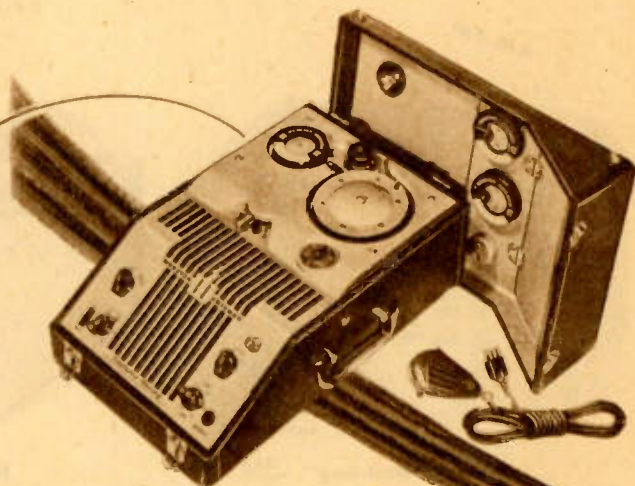
Magnetic wire recordings are permanent and can be replayed thousands of times with no appreciable loss of volume or tone quality. A single word or a whole program can be easily erased. Built-in 6" speaker and 3 tube amplifier easily plugged into front panel.

Complete with Webster III impedance crystal microphone with 8 foot cord. Mike may be held in hand, suspended, or placed on table or floor. Heavy duty 6 foot power cord with molded rubber plug. Records at 2 feet per second, rewinds at 14 feet per second. Attractive case covered in dark brown leatherette resembles expensive over-night bag when closed. 17-3/8x11-3/8x7-1/2". Three spools of recording wire (two 15 minute and one 30 minute spools).

34G22602 — Model 180-1 Shpg. Wt. 32 lbs. . . . . **149.50**

34G16303— Input Cord to connect radio, phono. . . . . 1.75

34G16304— Output Cord to connect external speaker or amp. . . . . 1.75



## LAFAYETTE PORTABLE RECORD CHANGERS

• Single or Dual Speed models • 4-Tube Amplifier

Deluxe brown leatherette covered portable with 4 tube amplification. High quality speaker. Two tone arms: for standard and LP records. Tone arms and turntable in attractive maroon coloring. Plays ten 12" records or twelve 10" records at a single loading. Separate volume control and tone control knobs. Two heavy-duty safety clasps and brown leather carrying handle. Anchor rests for tone arms insure safe portability. Overall size: 20½x15x8¾". Complete with standard and LP needles, power cord and plug.

34G22682 A 69.50 VALUE FOR ONLY . . . **47.50**

34G22683 Same as above, single speed only (78 RPM) 37.50

**LAFAYETTE WILL NOT BE UNDER-SOLD!**

## INDUCTION PICKUP FOR TELEPHONES

Picks up conversations by simply placing the phone base on pickup platform and connecting leads to high-impedance input of a medium gain audio amplifier or to recorder. Speaker in another city can address audience by phone.

35G22523 — Wt. 3 lbs. . . . . **5.88**  
35G22524 — Induction coil only 4.70

## RECORDING WIRE For All Wire Recorders

34G16311 — 15 minute spool wire. . . . . 1.27  
34G16312 — 30 minute spool wire. . . . . 1.90  
34G16313 — 60 minute spool wire. . . . . 3.15

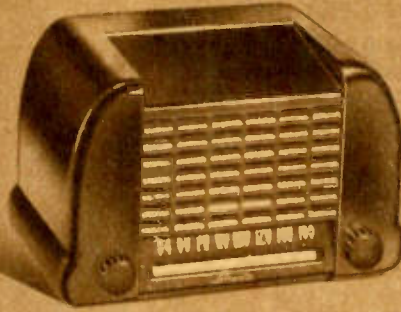






List Price 34.50

Now a "Best Buy" 16.95



Now a "Best Buy" 14.95



Now a "Best Buy" 10.95

## LAFAYETTE-CONCORD FEATURES FOR GREATER VALUES

The beautiful walnut veneer cabinet of this table-model radio will make you place it in a "show-off" location in your living room. And the brilliant tonal quality matches the beauty of the cabinet! The 5-tube design assures you fine reception over the entire broadcast band. Continuously-variable tone control gives you any quality you want from deep-throated bass to clearest-toned treble. Built-in loop antenna eliminates the need for an outside aerial. Slide-rule dial with large easy-to-read numbers makes for easy tuning. Modern engineering design assures the utmost possible performance. Full 5-inch Alnico V PM speaker gives sparkling reproduction. Tubes: 12BE6, 12BA6, 12AT6, 50B5, and 35W4 rectifier. Works equally well on 110 volts AC or DC. 11 1/2 x 8 1/4 x 6 1/2".

1G537 Shpg. Wt. 12 lbs. . . . . 16.95

Attractive appearance and rich, colorful performance make this "Honeycomb" model radio an ideal set for the home, either as the main source of entertainment, or as an extra for kitchen or bedroom. No squinting when you tune this radio; slide-rule dial has big, easy-to-read numbers. Strikingly-designed plastic cabinet comes in your choice of two colors: Ivory or Walnut. Efficient superheterodyne circuit combines good sensitivity and excellent tone quality at an output of two watts. Tubes used: 12SA7, 12SG7, 12SQ7, 50L6, plus 35Z5 rectifier. 10 1/2 x 6 1/2 x 7". Shpg. Wt. 8 lbs.

1G521 Walnut, Each, Singly. . . . . 14.95  
 Each, lots of 3. . . . . 13.95  
 1G522 Ivory, Each, Singly. . . . . 15.95  
 Each, lots of 3. . . . . 14.95

A modern table-top superheterodyne radio at a sensationally-low "pre-war" price! This handsome, well-built set is priced so low that each member of your family can have a personal radio. Full 5-inch speaker combines with Beam Power Output to give room-filling volume on all local stations. Large slide-rule dial has easily-read numbers. Smooth plastic cabinet is supplied in your choice of two colors. Built-in antenna eliminates outside aerial. Tubes: 12SA7, 12SQ7, 50L6, and 25Z5 rectifier. Works on 105-120 volts AC or DC. Cabinet dimensions: 10 x 7 1/4 x 6 1/2". Shpg. Wt. 9 lbs.

1G413 Walnut, Each, Singly. . . . . 10.95  
 Each, lots of 3. . . . . 9.95  
 1G414 Ivory, Each, Singly. . . . . 12.95  
 Each, lots of 3. . . . . 11.95



AM-FM

List Price 49.50

Now a "Best Buy" 39.95



List Price 29.95

Now a "Best Buy" 19.95



A VERIFIED \$94.50 VALUE AT ONLY 49.50



List Price 94.50

Now a "Best Buy" 49.50

## TABLE MODELS AND COMBINATIONS - TOPS IN PERFORMANCE

Real news in radio! Here's FM that everyone can afford! The rich, static-free beauty of FM, plus glorious high-fidelity AM...both are combined in one smartly-styled cabinet. Latest design superhet circuit employs separate RF and IF circuits for FM and AM. Alnico V PM speaker assures quality reproduction of two watts audio output. Built-in loop antenna for AM and built-in dipole antenna for FM provide ample pickup, eliminating need for outside aeriels. Tubes used: Three 6BJ6, two 12BE6, 12AL5, 12AT6, 50L6, plus selenium rectifier. 12x8x9". Shpg. Wt. 10 1/4 lbs.

1G805 Brown plastic, Each, Singly 39.95  
 Each, in lots of 3. . . . . 37.95  
 1G806 Ivory plastic, Each, Singly. . . . 41.95  
 Each, in lots of 3. . . . . 39.95

Compact...Convenient! And you'll be amazed at the clarity and volume of reproduction in this easy-to-operate radio-phonograph. It's built to the exacting standards you'd expect only in sets selling at far higher prices! THE PHONOGRAPH has zephyr-light tone arm with shock-mounted Astatic crystal cartridge and semi-permanent type Fidelitone needle. THE RADIO is a modern superhet with two stages of IF and condenser tuning for more stations. High flux density Alnico V PM speaker. Continuously-variable tone control. For 105 to 120 volts, 60 cycle, AC operation only. Tubes used: 12SA7, 12SQ7, 50L6, plus 35Z5 rectifier. THE CABINET is of attractive design in hand-rubbed Walnut finish. 8x11x11 1/2".

1G417 Wt. 15 lbs. Each, Singly. 19.95  
 Each, Lots of 3. . . . . 18.95

Here's modern styling, compactness, and light weight for recorded enjoyment wherever you go. THE PHONOGRAPH plays ten 12" or twelve 10" records without interruption. Lightweight crystal pickup with Floating Point needle. THE RADIO operates on 540-1700 Standard Broadcast and police bands. Features a continuously variable tone control. Alnico V PM speaker. Built-in antenna, power-line filter. Tubes: 12SA7, 2-12SK7, 12SQ7, 50L6, Selenium Rectifier. THE CABINET is finished in water-proof leatherette. 20 1/2 x 15-1/8 x 8 1/4".

1G506-Shpg. Wt. 36 lbs. Each, 49.50  
 Each, Lots of 3. . . . . 47.50

1G535-As above, with dual speed motor, reversible cartridge. Each, Singly. . 59.50  
 Each, Lots of 3. . . . . 57.50



**NOW LISTEN TO YOUR FAVORITE PROGRAM ANYWHERE** Now a "Best Buy" 34.95

**PROGRAM ANYWHERE**

Now a "Best Buy" 21.75



**BICYCLE** List Price 24.95  
Now a "Best Buy" 19.95

**FOR BICYCLE**



**IN BED**

List Price 29.95

**IN BED**



List Price 47.50

**AUTOMOBILE**

List Price 35.00  
Now a "Best Buy" 23.95



Mount this fine portable radio on the handle-bars of your bicycle...you can listen to your favorite program as you drive! Or carry it along with you as a personal radio for hours of enjoyment!

This powerful battery-operated radio has "theft-proof" bicycle mounting hardware, plus an attached handle. Edge-lighted slide-rule dial, vernier tuning, and telescopic antenna. Tubes: 1-35A, 1-1S5, 1-1T4/1U4, and 1-1R5. Full size Alnico V PM speaker gives high-quality reception. Operates on two flashlight cells and one standard 67½-volt "B" battery. Housed in beautiful hammertone case. 7¼x4¼x3½". Batteries not included.

1G420 Shpg. Wt. 3 lbs. . . . . 19.95  
20G19878 Battery Kit. . . . . 1.84



Spend pleasant, luxurious evenings in bed, reading your favorite book under soft overhead light while listening to a program of glorious music playing above you on this beautiful bed-lamp radio!

Just imagine the enjoyment you'll get from this clever combination. Adjustable brackets supplied fit any bed. Superheterodyne radio uses 12SA7, 12SK7, 12SQ7, and 50L6GT tubes with 35Z5GT rectifier. Built-in "Air-Magnet" antenna. The powerful PM speaker aids flawless reception. The bed lamp consists of a strong tubular lamp and frosted curved lens for a glareless light. For 110 volts AC or DC. 9½x5¼x7". Shipping Weight 8 lbs.

1G533 Walnut. (Each, Singly). 21.75  
1G534 Ivory. (Each, Lots/3). . . . 20.75



**WAKE UP AND SING**



A great auto radio designed for easy universal mtg. in any automobile! Carefully matched speaker insures sparkling reproduction and modern two-gang cond. tuned superhet circuit makes for excellent selectivity. Licensed by RCA and Hazeltine. Tuning range covers entire broadcast band with quickly manipulated controls. Automatic volume control. Tubes: 6AS5, 6BE6, 2-6BA6, 6AT6, 6X4 rectifier. Easy installation. Uses any standard auto antenna. See Page 24. Tan Hammerloid finish, Maroon-on-White dial. Complete with generator condensers, suppressor, and instructions. 5¼x4-5/8x12¼".

1G623—Shpg. Wt. 9½ lbs. Each 34.95  
Each, lots of 3. . . . . 33.95



**WAKE UP AND SING**

Soft music comes on automatically to gently awaken you in the morning! Or go to sleep to music, knowing it will be turned off for you! This attractive clock-radio acts as your electrical servant.

Think of it! An automatic clock-radio which can be set to turn on your favorite morning program and awaken you with music. Or set it to turn off your evening program after you have gone to sleep. No more missing favorite radio shows. Clock has a large, easy-read face and a self-starting motor to give you electrically-correct time. The modern radio gives brilliant reception. Easily-operated controls. Slide-rule dial. Tubes: 14Q7, 14A7, 14B6, 50A5, and 5Y4 rectifier. Dimensions: 13x7x8½".

1G539 Shpg. Wt. 46 lbs. 23.95



**A VERIFIED \$149.50 VALUE AT ONLY 64.50**



**PHILLIP'S 5 BAND, 9 TUBE AC RECEIVER**

Real adventure in radio listening! Hear the whole world—Shanghai, Paris, London, or Rio de Janeiro—with this powerful, five-band, eight-tube receiver. It's designed to bring strange music, foreign tongues, far-away places into your home. You can keep up-to-date on world affairs through direct broadcasts from other countries. This precision-made receiver was built by one of the world's outstanding radio manufacturers to sell at more than twice the Lafayette price. Top-quality reception with room-filling volume is assured by the modern circuit design, powerful amplification, and big 10" speaker.

These are the features which make this receiver such a top value: Push-pull audio output; RF stages on all bands; 3-gang condenser; big 10-inch Alnico V PM speaker with an extra speaker connection provided. The five bands are: Standard broadcast (530 to 1650 kc.); 1.62-4.71 Mc.; 4.6-10.2 Mc.; 10.1-15.6 Mc.; and 15.4-22.2 Mc. Tone mixer control, performance and fidelity control switch. Has phonograph input. Tubes used are 2-6V6, 2-6SQ7, 1-6JA7, 2-6SG7, 1-5Y3, 1-6U5. Operates on 110 to 240 volts, 50-60 cycles AC. Built-in transformer is tapped at 110, 125, 145, 200, 220 and 240 volts. The cabinet is of beautiful, two-toned wood of a striking design, with an easy-to-read slide rule-type dial. Dimensions: 22½x15¼x9". Shpg. Wt. 41 lbs.

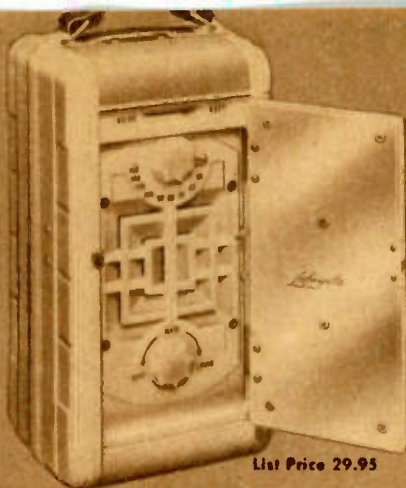
1G901 Complete with tubes. . . . Each, lots of 3. . . . . 59.50 . . . . . 64.50



**LAFAYETTE WILL NOT BE UNDER-SOLD!**







List Price 29.95



List Price 39.50



List Price 59.95

Now a "Best Buy" 19.95

"Best Buy" 24.95

Now a "Best Buy" 29.95

## TAKE 'EM AWAY - WHEREVER YOU GO - THEY'LL PLAY THE BEST 3 WAY PORTABLES FOR YOUR ENTERTAINMENT DOLLAR

This is about the handiest portable radio that you can buy! It's small...it's light to carry. And it has a brilliant quality of tone that will surprise you in this small a set. It makes an ideal gift for a boy or girl away at school, a salesman or a traveler. Sensational RCA and Hazeltine-licensed improved circuit uses 1R5, 1T4, 1S5, and 3Q4, plus selenium rectifier. Three of these tubes serve a dual function so that you get extra power and efficiency from fewer tubes. Speaker is designed for utmost quality and volume. Housed in a smartly-styled, colorful unbreakable plastic case, with built-in loop antenna. Strong carrying handle. 8½x4¼x3-7/8". Shpg. Wt. 7 lbs. with batteries. Available in your choice of the following colors: Ivory, Maroon, Beige, or Black. Please specify color.

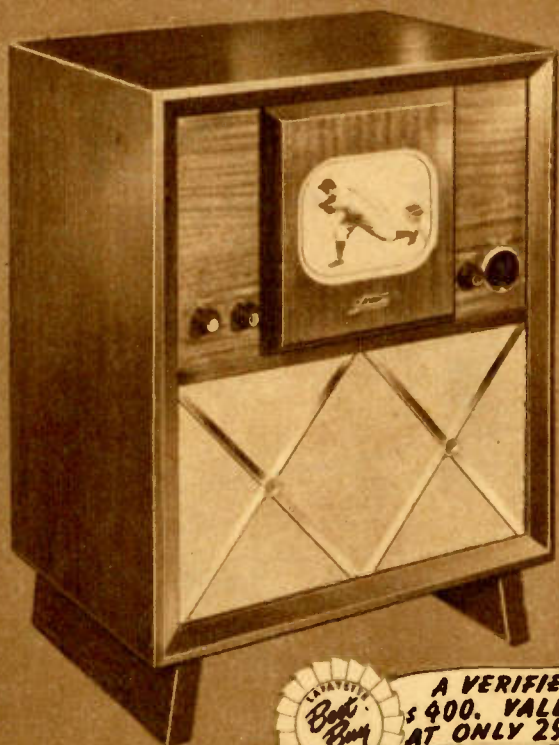
1G408 Less Batteries. . . . . 19.95  
20G19878 Battery Kit for above. . . . . 1.84

Smartly-styled in two colors, this three-way portable is light, strong, convenient! You'll get excellent reception wherever you are—on 117 volts AC or DC or on the self-contained batteries. Use it at home, or take it with you whenever you travel. You needn't miss your favorite program if you have this handy personal radio along with you. Powerful new superheterodyne circuit and efficient Alnico V PM dynamic speaker assure more than ample output with an excellent tone quality. Housed in attractive two-toned aluminum case designed to withstand the rugged usage given a portable radio. Tubes used: 1R5, 1T4, 1S5, 3S4, plus selenium rectifier. Dimensions: 8x5x4". Batteries not included. Available in your choice of the following colors: Red, Green, Blue, or Gold. Please specify.

1G415 Shpg. Wt. 7 lbs. . . . . 24.95  
20G19883 Battery Kit for above. . . . . 2.04

Real luxury among portable radios! Yet this fine radio in a modern alligator-grain case is priced surprisingly low! It operates on self-contained batteries, on 110-volt house current, or on 110-115-volt DC. Powerful new superhet circuit uses 7 tuned circuits, tuned RF stage, and 3-gang condenser. Permeability-tuned transformers and oscillator coil. Beam power output, automatic volume control, and 5-inch Alnico V PM speaker give brilliant reception. The 5¼" slide rule dial tunes from 538 to 1650 kc. Tubes: two 1T4, 1R5, 1S5, 3Q5, plus 117Z3 rectifier for AC. Portable case of strong plywood covered with alligator-grain simulated leather. 7x10½x12¼". With tubes. Shpg. Wt. 9 lbs.

1G626 Less Batteries, Each Singly 29.95  
Each, in lots of 3 . . . . . 28.95  
20G19880 Battery Kit for above. . . . . 3.92

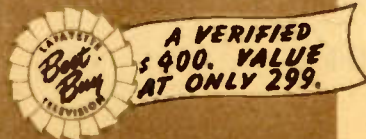


## TV in the modern manner the new Lafayette Console

- 30-TUBE CHASSIS—SYNCHRO-LOCK FEATURE
- HI-FI FM WITH 10" ALNICO SPEAKER
- HIGH SENSITIVITY FOR BEST RECEPTION

Here in a graceful set tailored to fit any decor is Lafayette's brand new triumph. Here is dollar economy retaining every precision feature of the big-set console. The same famous 630TS chassis used in the console is your guarantee of day and night viewing brilliance. The full 10" picture tube — 82 square inches of thrilling television! The RCA front-end completely wired and aligned by Lafayette engineers! 30 tubes including 5 rectifiers! All thirteen channels may be tuned with the sharp, clean brightness of modern design television. Easy-to-manipulate controls for pinpoint focussing! "Synchro-lock" to hold the picture firmly in place! With all, the matchless clarity of FM sound through a 10" speaker and a 22½x13¼" baffle. All these are housed in luxurious hand-rubbed mahogany. This is engineering with a bang. Yes, it's design all the way in size economy, dollar economy, and flawless television. For the discerning eye and ear, it's the new Lafayette console. Shpg. Wt. 120 lbs. Size: 26x35x18¼".

1G114. . . . . 299.00





# Magnificent Console Phono Radios

AM-FM with  
AUTOMATIC  
FREQUENCY  
CONTROL

12-INCH  
CONCERT  
SPEAKER

PUSH-PULL  
BEAM POWER  
AUDIO OUTPUT



The features of a \$300.00 console  
Now at Lafayette for only 169.50

Superb reproduction of glorious FM, standard AM, and recordings, with the rare beauty of mahogany in a Regency-styled cabinet...all in this one splendid instrument! Modern engineering design incorporates automatic frequency control, push-pull beam power output, and 11 tubes plus rectifier. The result is ease of tuning, and rich, full tonal quality. Automatic record changer plays twelve 10" or ten 12" records. The luxurious hand-rubbed cabinet has plenty of record space. Deluxe 12-inch Alnico V PM speaker. Loop antenna for AM, folded dipole for FM. Tubes are 6BA6, 7F8, 7Q7, 6C4, 7AH7, 6SH7, 6SQ7, 7A6, 7F7, two 7C5, and 5Y3GT rectifier. Size: 33½x35½x17". 105-120 v. 60 c. AC only. Prices available on request for the same components in modern cabinet at extreme lower right.

1G1207 - Shpg. Wt. 100 lbs. . . . . 169.50  
1G1208 - With dual-speed motor (33-1/3 and 78 RPM) and reversible cartridge for standard and LP records. . . . . 179.50



POWERFUL  
AM-FM 8-TUBE  
RECEIVER

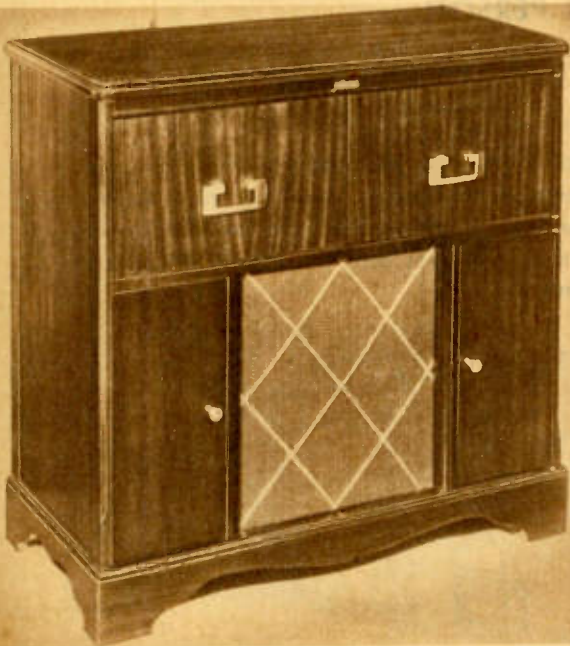
SMOOTH  
NOISELESS  
CHANGER

HANDSOME  
CUSTOM  
CABINET

Another Lafayette console "Best Buy"  
A complete set for the cabinet price

The finest workmanship, a distinguished mahogany console and precision parts make this splendid radio-phonograph combination a rare addition to the beauty and pleasure of your home! You'll thrill to the marvelous reproduction, the brilliant clarity of tone of FM, standard broadcasts and recordings. Regency-styled mahogany cabinet has ample record space. Automatic record changer plays ten 12-inch or twelve 10-inch records. Powerful FM-AM radio has automatic volume control and large 8-inch speaker. Built-in AM loop antenna and folded dipole for FM. Covers 88-108 Mc. FM band and 540-1600 kc. AM band. Tubes: 12AT7, 6BE6, two 6BA6, 6AL5, 6AT6, 6AQ5, and 5Y3 rectifier. 105-120 v. 60 c. AC only. 33-1/8x34x16½".

1G813 - Shpg. Wt. 90 lbs. . . . . 139.50  
1G814 - With dual-speed motor (33-1/3 and 78 RPM) and reversible cartridge for standard and LP records. . . . . 149.50



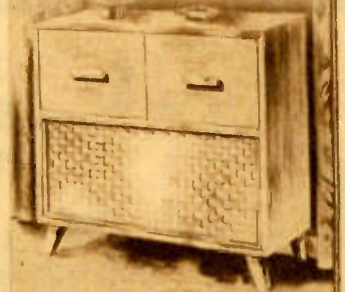
I give Lafayette  
radios for gifts.  
They're such  
grand values;  
and there are so  
many kinds to  
choose from.



I never bought  
anything as  
big as a radio  
by mail . . .  
Now I sure am  
glad I did . . .  
saved big  
money . . . Got  
a better set . . .  
I recommend it.

*If you like the Modern Touch*

This modern console of striking design will accommodate the radio and phonograph components on any of these pages. Lower section will house 12" speaker. Wt. 85 lbs. 35x36¼x17-3/4"  
3G103 Bleached Mahogany . . . 179.50  
3G107 Bleached Oak . . . . . 189.50

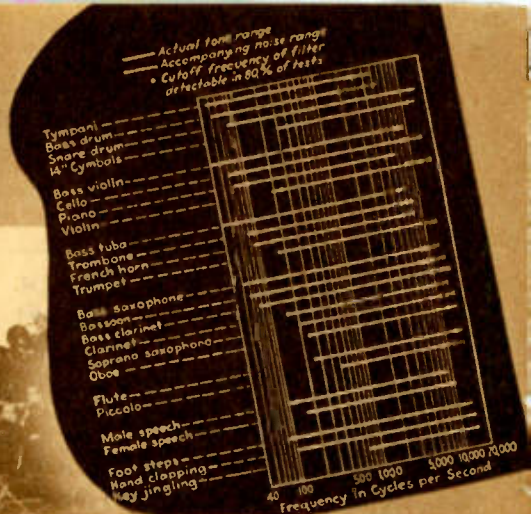




# HIGH FIDELITY custom assemblies



*What is High Fidelity?*



## What are the components of a High-Fidelity System?

High-fidelity sound equipment gives you the complete range of sound shown on the above chart, from the extremely-low notes of the tuba to the extremely-high passages of the oboe. If you have heard only the middle range of tones on other equipment, you will take new pleasure in the full, exciting richness of high fidelity!

These are the components of a high-fidelity system:



A carefully-designed AM or FM radio tuner to receive stations with all their original program quality. Every musical note played in the studio is reproduced without distortion or hum.



A powerful amplifier which will increase the strength of the signal from the radio tuner to the full desired volume without distortion or hum.



A heavy-duty speaker which is large enough to handle the full capacity of the amplifier, transforming the complete range of frequencies into realistic sound.



A precision-built record changer with a light pickup arm assembly, a first-quality needle, and a smooth-running motor, able to accurately register every musical note on the finest recording. A matching preamplifier may be separate, or built into the amplifier.



A noise suppressor makes your records ageless! Play them for years without apparent surface noise or annoying rumble. You'll get longer life, more music, and more pleasure from your recordings!



A handsome cabinet, smartly-designed in rare, hand-rubbed hardwood, provides a worthy setting for a fine high-fidelity instrument.

## How to select the components of a High-Fidelity System

### BY MAIL...

Select the high-fidelity components you desire from among those listed on these pages, knowing that you are saving real money on fine equipment. Feel free to write to our Sound Department for further information or suggestions. Lafayette maintains a staff of consulting engineers to help solve your problems in sound. You will receive advice based on many years in the sound field.

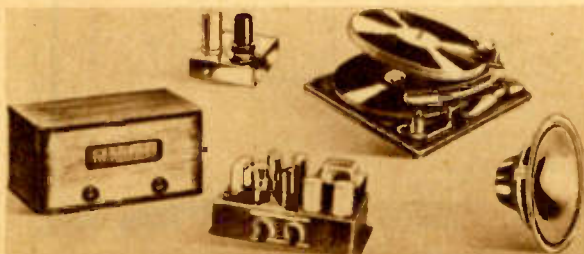
### OR IN PERSON...

Come into one of our convenient stores. Listen to the hundreds of combinations possible among our extensive display of high-fidelity equipment. You'll be able to select those components which will best suit your needs by actual listening tests. Let your ear decide!

On the rack below are pictured the finest in High-Fidelity Components. Tuner, amplifier and speaker combinations are auditioned in any of hundreds of variations that the taste and budget of the listener may demand...



## HI-FI PACK RECOMMENDED BY CONSUMER RESEARCH ORGANIZATION



This high-fidelity package has been recommended by a famous research organization for its fine quality at the lowest possible price. Glorious FM radio, marvelous record reproduction are yours with these components. And interconnections are provided for attaching to a standard broadcast tuner. The complete package includes these (See pages 17, 18, 19 for full description of components.)

1. Melssner 8C FM Tuner, with seven tubes plus rectifier.
2. Bell model 2122 Hi-Fi amplifier described on page 18.
3. Webster 156-27 Automatic Record Changer, with new G.E. var. reluct. pickup.
4. Full-range 12" GE S1201D Alnico V permanent magnetic speaker.

30G21350 Shpg. Wt. 50 lbs. . . . . **116.60**

30G21351 - As above with Webster 256-27 dual speed & 2 GE cartridges... 126.40

30G21348 - As above with Bogen PH10 amp., GE preamp, & Webster 156-27. 113.72

30G21349 - As above with Webster 256-27 dual speed & 2 GE cartridges.. 123.54

Adaption charges for interconnecting components. . . . . 7.00



# You Get...

**5 Complete De Luxe PHOTOFACT Volumes**

COVERING POST-WAR MODELS UP TO DEC. 1, 1949



**OWN PHOTOFACT**

**THE WORLD'S FINEST SERVICE DATA LIBRARY**

**ON EASY TERMS**

Here's how easy it is to get your complete Photofact Library today — so you can start making extra profits immediately. Pay only \$18.73 down. Then your first 5 volumes and two Deluxe binders for volumes VI and VII are shipped to you direct from the publisher. From then on, its \$10 per month for 11 months. You receive regularly from us, as they are released from the press, 20 Folder Sets to complete volumes VI and VII. You have 11 full months to pay and at the same time, you remain up-to-the-minute with fresh data. Remember — you pay NO interest — you pay NO carrying charges. YOU PAY ABSOLUTELY NOTHING EXTRA.

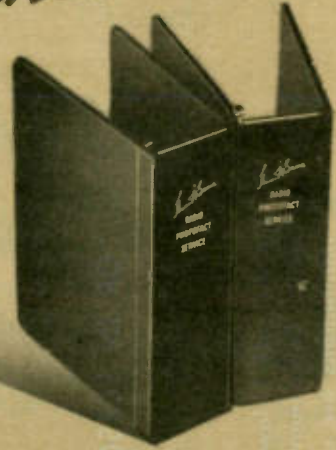
In addition, you also receive FREE membership in the Howard W. Sams Institute. This entitles you to expert replies to your technical questions; special services; the help and guidance of a service-minded organization, backed by the experience of 25,000 Institute members.

From every angle, Photofact will earn more for you. And with this unprecedented easy-payment plan, you will stay abreast of all the post-war sets you service.

Place your order now — Get the PHOTOFACT Library today — and let it help you earn more money!

*and...*

**2 De Luxe Binders**  
for Your New Current PHOTOFACT FOLDER SETS



NOW YOU CAN OWN A COMPLETE SET OF HOWARD SAMS PHOTOFACT VOLUMES I THROUGH VII ON AN EASY TIME PAYMENT PLAN. No carrying charges. No interest. YOU PAY ONLY THE REGULAR CASH PRICE.

"Pay-as-you-profit" with the only Radio Data Service that gives you everything you need to know for faster, more profitable work. Photofact is complete, accurate, uniform, original — the only Service Data based on first hand laboratory study of the actual equipment. Only Photofact gives you these features: 1. Exclusive TV set coverage in easy to use, practical, individual envelopes. 2. Exclusive Standard Notation schematics. 3. Exclusive oscilloscope wave forms. 4. Full Photo coverage of all chassis views, with each part coded for easy identification. 5. Complete alignment instructions that work every time. Measurements made with service type test equipment. Stage gain, circuit voltage and resistance analysis for each model. 6. Complete parts listings and proper replacements for each model. 7. Disassembly instructions, or complete chassis removal instructions. 8. Dial cord stringing diagrams. 9. Record changer analysis and service data. 10. Exclusive "keyed" data system for instant, accurate reference. Component values right on the schematic and associated with the part. To protect your future in servicing, get the best — the complete Photofact Service Data Library. Act now — its your opportunity to boost your Service profits the easy way. YOU'LL USE PHOTOFACT EVERY WORKING HOUR.

*and...*

**20 PHOTOFACT Folder Sets**

To Complete Volumes 6 and 7 Current Model Coverage



ENCLOSE A DOWN PAYMENT AND SEND IN FOR YOUR CONTRACT NOW!

**ONLY \$18.73 DOWN**  
11 FULL MONTHS TO PAY

**NO CARRYING CHARGES**  
**NO INTEREST**

**and FREE MEMBERSHIP IN... THE HOWARD W. SAMS INSTITUTE**



We've made a **BUY**  
**THAT STUNNED** the P.A. world

**SPECIAL HIGH-FIDELITY AMPLIFIER**



Lafayette made a sensational buy on these fine amplifiers...and it's passing the saving on to you! We had the chance to get them from a well-known manufacturer at a remarkably-low price. You are the one who gains. You can save up to \$30 with the assurance that you are getting a quality amplifier of reputable brand.

The 20-watt Deluxe high-fidelity amplifier at right is capable of superb reproduction of both voice and music. Frequency range 50 to 15,000 cycles. It's ready for rack installation or as an individual unit. Master Gain Control to regulate all channels without resetting individual control. Output impedances 2, 4, 8, and 500 ohms. Dual tone controls provide independent adjustment of bass and treble. All connections are

easily made in the rear of amplifier. On-off switch on front panel. Screw-in type fuse. Tubes used are two 12S17, 6SL7, 6SL7, two 6L6G, plus 5Z3 rectifier. Cabinet is made of heavy-gauge steel with black crackle finish. Amplifier fits standard relay rack. Size: 19 1/4" wide by 17 1/4" deep by 9 1/4" high. For 105-125 60 cycle AC only. Underwriters Laboratory approved.

- 26410 20 Watt Deluxe Amplifier only... 47.50
- Deluxe 20 Watt Hi-Fi Music System, includes amplifier shown as right, plus two 12" G.E. Speakers, two Walnut Baffles, 70' Speaker Cable, a 610 Electrovoice dynamic mike, and floor stand. 26415. . . . . 89.79

**IF BIG SAVINGS  
 MEAN ANYTHING TO YOU**

You'll want to take advantage of this tremendous value in record-player amplifiers! Here's a choice of 25 or 16 watts power, a choice of automatic changer or standard record player in the 25-watt model. Their compactness and light weight make them excellent for either fixed or portable use — just the thing for churches, orchestras, schools and carnivals where reliable performance at a low cost is important! These are the fine features you get: Two microphone inputs with separate volume controls; two phono inputs with 2-way volume control; four speaker outputs with selector switch, tone control; and illuminated panel.

- 25-watt Amplifier with Automatic Changer. . . . . 57.50
- 26407 — Shpg. Wt. 4 lbs. 14" square by 11 1/4" high. . . . . 49.50
- 25-watt Amplifier with Single Record Player, 14" square x 9 1/4" . . . . . 47.50
- 26408 — Shpg. Wt. 41 lbs. 9" turntable, crystal pickup. . . . . 90.35
- 16-watt Amplifier with Automatic Changer. . . . . 108.10
- 26409 — Shpg. Wt. 36 lbs. 14" square by 11 1/4" high. . . . . 98.10
- 25 Watt Portable System. Contains the 25 Watt Amplifier with Player, watt speakers, a 707A Shure Crystal Mike, floor stand, with changer 26412. . . . . 90.35
- 25 Watt Deluxe portable system contains the 25 watt amp. with changer a portable speaker case assembly, with 2 GE 25 Watt speakers, 707A Shure Crystal Mike, floor stand, portable amplifier case. . . . . 108.10
- 26413 — with 25 watt record changer. . . . . 98.10
- 26414 — with 16 watt record changer. . . . . 98.10



**GET THEM NOW  
 WHILE THEY LAST**







**PARCEL POST RATES  
INSURANCE AND C.O.D. SERVICES**

**INSURANCE FEES**

Value of Parcel Not Over	
\$ 5.00 . . . . .	3 cents
25.00 . . . . .	10 cents
50.00 . . . . .	15 cents
200.00 . . . . .	25 cents

**C.O.D. FEES**

Amount of C.O.D. Charges or value in excess of C.O.D. charges

Not Over	
\$ 2.50 . . . . .	20 cents
5.00 . . . . .	25 cents
25.00 . . . . .	35 cents
50.00 . . . . .	45 cents
100.00 . . . . .	55 cents
150.00 . . . . .	60 cents
200.00 . . . . .	65 cents

PLEASE PRINT NAME AND ADDRESS PLAINLY

NAME \_\_\_\_\_

RURAL ROUTE \_\_\_\_\_ BOX No. \_\_\_\_\_

STREET ADDRESS \_\_\_\_\_

POSTOFFICE \_\_\_\_\_

STATE \_\_\_\_\_

PLACE  
STAMP  
HERE

# Lafayette Concord

## CONCORD RADIO

901 W. Jackson Blvd.  
CHICAGO 7, ILL.

Weight	Local	ZONES							
		1-2 Up to 150 miles	3 150 to 300 miles	4 300 to 600 miles	5 600 to 1,000 miles	6 1,000 to 1,400 miles	7 1,400 to 1,800 miles	8 Cover 1,800 miles	
1	0.10	0.12	0.13	0.14	0.15	0.16	0.17	0.18	
2	.11	.15	.16	.19	.21	.24	.27	.30	
3	.12	.17	.19	.23	.27	.31	.36	.41	
4	.13	.19	.22	.28	.33	.39	.46	.53	
5	.14	.21	.25	.32	.39	.46	.55	.64	
6	.15	.23	.28	.37	.45	.54	.65	.76	
7	.16	.25	.31	.41	.51	.61	.74	.86	
8	.17	.27	.34	.46	.57	.69	.84	.99	
9	.18	.29	.37	.50	.63	.76	.93	1.10	
10	.19	.31	.40	.55	.69	.84	1.03	1.22	
11	.20	.33	.43	.59	.75	.91	1.12	1.33	
12	.21	.35	.46	.63	.80	.98	1.21	1.44	
13	.22	.37	.49	.68	.86	1.06	1.31	1.56	
14	.22	.39	.52	.72	.91	1.13	1.40	1.67	
15	.23	.41	.54	.76	.97	1.20	1.49	1.79	
16	.24	.43	.57	.80	1.02	1.27	1.58	1.89	
17	.25	.45	.60	.85	1.08	1.35	1.68	2.01	
18	.25	.47	.63	.89	1.13	1.42	1.77	2.12	
19	.26	.49	.66	.93	1.19	1.49	1.86	2.23	
20	.27	.51	.68	.97	1.24	1.56	1.95	2.34	

For Each Added lb. Add

SECOND FOLD ON THIS LINE

FIRST FOLD ON THIS LINE

THIRD FOLD ON THIS LINE

**EXPRESS CHARGES**

Express charges are also determined by the weight of the shipment and distance of the consignee from shipper. The following chart indicates charges. Add 3% Federal Excise Tax.

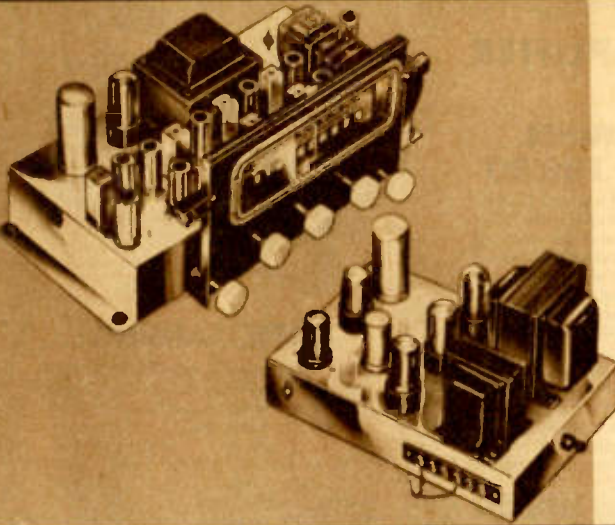
Maximum Distance In Miles	50 Mi.	150 Mi.	300 Mi.	500 Mi.	750 Mi.	1000 Mi.	1500 Mi.	2000 Mi.
Cost up to 5 lbs.	0.78	0.89	0.91	0.93	1.00	1.01	1.09	1.37
" " 10 lbs.	.86	.99	1.05	1.10	1.21	1.24	1.41	1.96
" " 15 lbs.	.92	1.13	1.19	1.26	1.44	1.48	1.73	2.55
" " 20 lbs.	.96	1.24	1.32	1.43	1.66	1.71	2.05	3.14
" " 25 lbs.	1.01	1.37	1.47	1.59	1.88	1.96	2.37	3.74
" " 35 lbs.	1.10	1.60	1.75	1.92	2.32	2.43	3.01	4.92
" " 45 lbs.	1.20	1.84	2.03	2.25	2.77	2.90	3.65	6.11
" " 55 lbs.	1.28	2.08	2.27	2.58	3.21	3.38	4.28	7.29
" " 75 lbs.	1.47	2.55	2.83	3.24	4.07	4.33	5.56	9.66
" " 95 lbs.	1.66	3.04	3.38	3.90	4.98	5.27	6.84	12.03
" " 100 lbs.	1.68	3.14	3.55	4.07	5.20	5.51	7.16	12.62

**SPECIAL DELIVERY**

- Up to 2 lbs. . . . . 25 cents
- Over 2 lbs. up to 10 lbs. . . . . 35 cents
- Over 10 lbs. . . . . 45 cents



# RADIO-CRAFTSMAN FM-AM TUNER AND AMPLIFIER



Two perfectly-matched high-fidelity components, designed by Radio Craftsmen, give you all the rich, accurate reproduction you can desire in a custom installation. The famous-make FM-AM tuner and its companion amplifier combine to bring in stations with their original sparkle and resonance, and at a powerful volume.

## Tuner Has Automatic Frequency Control

As the basic custom component, the high-fidelity FM-AM tuner has such features as automatic frequency control to eliminate FM receiver drift, and an electronic correction to "lock in" the receiver to FM signal. Frequency range is 88-108 Mc for FM reception and 540-1620 kc. for AM. Controls include Bass, On-Off Volume, AM-FM-Phono-Television, Tuning, and Treble. Two AC power outlets supply the phono motor and amplifier. Slide-rule edge-lighted dial gives easy, fast tuning. Uses nine fully-shielded miniature tubes plus rectifier. For 105-120 volts, 60 cycle AC only. Chrome plated chassis. Dimensions 9x14x10".

30G22487 Shpg. Wt. 17 lbs. . . . . 110.

## The Amplifier Makes a Fine Companion Unit

This quality amplifier has an output of over 12 watts at 1% distortion. Output taps of 4, 6, 8, 15, and 500 ohms for one or more speakers, transmission lines, or recorders. Overall gain of 65 db. Hum level is 65 db. below rated output. Frequency response within 1 db. from 20-20,000 c.p.s. at 8 watts output. High impedance input. Includes 4 tubes and rectifier. For 105-120 volts, 60 cycle AC only. Chrome plated chassis. Dimensions: 7x10x6".

30G22488 Shpg. Wt. 12 lbs. . . . . 39.

# BROWNING RJ20, RJ12A, AND RV10 TUNERS

## Browning RJ20—A Top Performer in AM-FM

The Browning Model RJ-20 FM-AM Tuner is designed for high-fidelity reception of both FM and AM. Tunes from 530-1650 kc. for AM, and 88-108 Mc. for FM. Has 20 db. quieting with 6 1/2 microvolts on FM band, sensitivity of 5 microvolts on AM. FM utilizes dual cascade limiting in Armstrong circuit. Bass and treble boost. FM response flat from 15-15,000 cycles - 3 db. 20,000 ohm output impedance. Tubes: Five 6AU6, 7F8, two 6AL5, 12AU7, 6SK7, 6SA7, 6SG7, plus 6AL7 tuning eye and 5Y3 rectifier. 7 1/4x17x9". 105-120 v. 60 c. AC. Completely self contained.

30G22481 Shpg. Wt. 24 lbs. . . . . 166.11

## Browning RJ12A Has AM With Drift-Compensated FM

The Model RJ-12A FM-AM Tuner gives excellent reception on standard broadcast and 88-108 Mc. FM. Armstrong circuit has flat response from 20-15,000 c.p.s. within 1 1/2 db. AM response within 3 db. from 20-6,600 c.p.s. Drift compensated FM, two stages cascade limiting, separate RF and IF systems on both bands.

30G22486 Shpg. Wt. 16 lbs. With 10 tubes, tuning eye. . . . . 121.18

30G22513 PF-12 Power Supply for above unit. Wt. 9 lbs. . . . . 15.78

## Browning RV10 FM Has Built-In Power Supply

Famous Browning quality in an FM tuner! Sensitive Armstrong FM circuit covers the 88-108 Mc. band. Tuned RF stage. Two-stage cascade limiter. High impedance output. FM-Phono switch. 6 1/2x11x8 1/4". 115 v. 60 c. AC.

30G22495 Shpg. Wt. 14 lbs. . . . . 87.71

# MEISSNER AM-FM AND 8C FM TUNER

## AM-FM Tuner Has 16 Tubes—Tuning Eye

The top-quality Meissner AM-FM Tuner has two separate tuners, power supply, and AF preamplifier, all in one chassis. Covers 527-1620 kc. AM and 88-108 Mc. FM bands. AM has variable selectivity. Frequency response + 2 db. 30-15,000 c.p.s. Bass and treble boost. Sensitivity less than 10 microvolts. Hum level is 60 db. below output. Sixteen tubes plus tuning eye and rectifier. For 115 v, 50-60 c. AC. 16-5/8x10 1/4". Requires 1 1/4" between chassis and panel.

30G22499 Tuner chassis only. Shpg. Wt. 19 1/2 lbs. . . . . 147.

30G22498 Black wrinkle cabinet for above. Wt. 12 lbs. . . . . 8.82

30G22497 Cabinet panel only. Shpg. Wt. 2 1/2 lbs. . . . . 2.35

## Meissner FM—Recommended by Consumer Organization

The Meissner Model 8-C FM Tuner adds FM to your AM receiver or any high-impedance input power amplifier. Standard 300-ohm antenna input. Sensitivity 40 microvolts. Output flat within 2 db. from 50-15,000 c.p.s. Large slide-rule dial. Built-in power supply. 105-125 v. 50-60 c. AC only. 12 1/4x6 1/2x8".

30G22496 In attractive walnut cabinet. Wt. 13 lbs. . . . . 38.33

30G22480 Chassis less cabinet. . . . . 34.33

# LAFAYETTE AM TUNER, HOWARD FM CONVERTER

## This AM Tuner Leads in Dollar Value

The Lafayette AM Tuner gives you high-fidelity coverage of the entire standard broadcast band from 535 to 1720 kc. High output impedance permits use with any high-fidelity amplifier. High phono input impedance; sensitivity of 30 microvolts; slide-rule dial; and automatic volume control. Low hum level. Tubes: 6BE6, 6BA6, 6AT6, and 6X4 rectifier. For 115 or 220 volts AC only. 10 1/2x6 1/2x6".

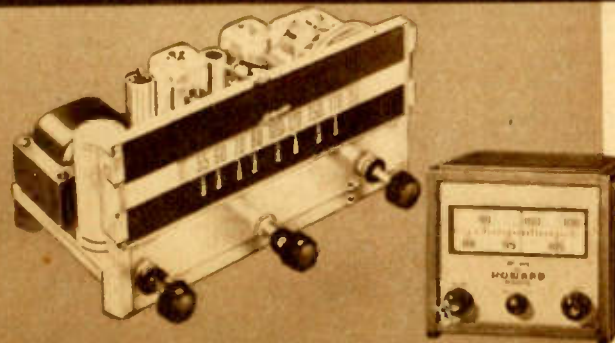
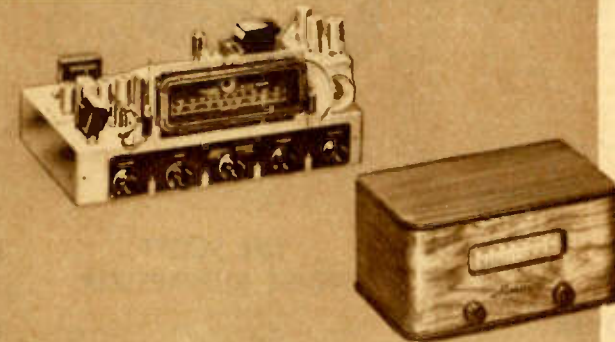
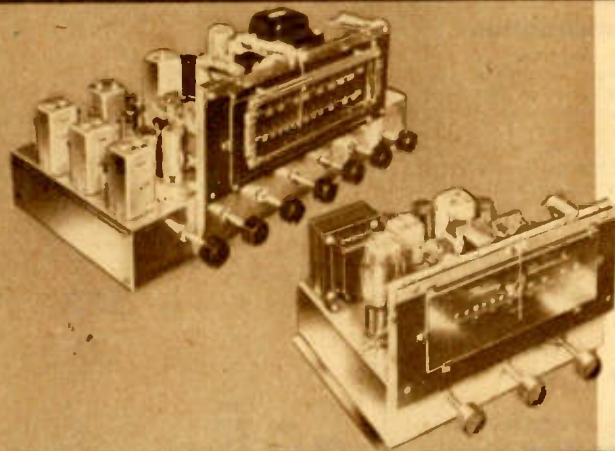
30G22482 Shpg. Wt. 10 lbs. . . . . 31.95

## Howard FM—Works With Any Radio

The Howard FM Converter adds thrilling FM to any regular AM set! Covers 88-108 Mc. FM band. Mounting bracket; slide-rule dial. Sensitivity less than 5 microvolts. Built-in antenna, volume control, and audio booster stage. Six tubes plus rectifier. Solid hardwood case 6-1/8x6 1/2x7 1/4". Shpg. Wt. 10 lbs.

30G22493 Blonde . . . . . 37.21

30G22492 Mahogany. . . . . 35.90





# HIGH FIDELITY custom assemblies **DESERVE A** **HIGH FIDELITY AMPLIFIER**

## SCOTT "MUSICALE" AMPLIFIER Verified \$290 Value Only 189.50

For those who desire the ultimate in custom installations, the Scott Musicale record-player amplifier will be the choice. This is the phonograph part of the illustrious Scott 800B radio-phonograph in a two-chassis design. The Music Control contains a Dynamic Noise and Scratch Suppressor, using three gating circuits. Controls are volume, on-off-bass, treble, music control, and phono-mike. Equipment has uniform output from 100-16,000 c.p.s.: flat with  $\pm 1.25$  db. from 40-20,000 c.p.s. at 20-watt rating. Crystal phono input for L75 or QT pickups. Built-in mike amplifier can be compensated for variable reluctance pickups. Fourteen tubes, including two rectifiers. Output impedance: 8-16 ohms. Panel:  $15 \times 3\frac{1}{2}$ ". Chassis:  $8 \times 15 \times 7\frac{1}{4}$ ". Power amplifier:  $8\frac{1}{2} \times 18 \times 8$ ". 110-125 volts 60 cycle A.C.

2G406 Shpg. Wt. 50 lbs. . . . . **189.50**

## THE BELL AMPLIFIER

### A Consumer Research Recommendation

Four inputs make this high-fidelity amplifier at left flexible in operation. In addition to inputs for a radio tuner and any crystal pickup it has two special inputs for the new-type magnetic pickups. It's ideal for micro-groove applications. Frequency response 30-15,000 c.p.s.  $\pm 3/4$  db. Bass and treble boost plus attenuation. Adjustable output impedance 3.4 to 18 ohms. Output is 10 watts normal, 15 watts peak. Hum level 65 db. below rated output. 110-volt outlet on back for radio or phono motor. Built-in preamplifier for each magnetic input. Tubes: Two 6V6GT, two 6SC7, 6SL7GT, and 5Y3GT rectifier. For 117 volts, 60 cycle, A.C. Dimensions of amplifier:  $7\frac{1}{2} \times 6 \times 11\frac{1}{2}$ ". Complete with tubes.

2G404 Shpg. Wt. 15 lbs. . . . . **40.87**

## LAFAYETTE'S OWN "BEST BUY"

### Designed for Use with the Webster Wire Recording Foundation Unit

The amplifier at left is specially-designed for use with the Webster wire-recorder unit and as an amplifier for GE and Pickering pickups. Flat response from 40-15,000 c.p.s. ( $\pm 2$  db.) Separate high and low gain inputs. 10-watt output, only 5% distortion. Bass and treble tone controls. Output impedances: 4, 8, 15, 500 ohms. Built-in wire-recording erase and bias oscillator. Neon recording level indicator. Separate, high frequency roll-off control available for switching from mike to GE reluctance pickup; 6-step compensation. Burgundy Hammerloid chassis  $10\text{-}5/8 \times 14 \times 7$ ". For 115 v. 60 c. A.C. Less dust cover.

2G190 Shpg. Wt. 25 lbs. . . . . **59.50**

2G191 Dust cover, Wt. 1 lb. . . . . 2.95

2G192 Roll-off Control, Wt. 3 lbs. 1. . . . . 5.95

## LAFAYETTE'S "MUSIC LOVER"

### A Verified \$80 Value for Only 47.95

Music lovers everywhere have been awaiting an amplifier like this, giving thrilling high-fidelity music reproduction at a modest price. Frequency range from 40-20,000 c.p.s. within 2 db. Ten watts normal, 18 watts peak output. Hum and noise level 65 db. below rated output. High input channel for microphone and reluctance pickups, medium for radio or crystal phono pickups. Continuously variable bass and treble controls. Output impedances: 2, 4, 8, 16, and 500 ohms. Tubes: Two 6SC7, 6SL7, two 6V6 (push-pull output) and 5Y3GT/G rectifier. Burgundy Hammerloid case  $12\frac{1}{2} \times 7\frac{1}{4} \times 8\frac{1}{2}$ ". For 105-125 v., 50-60 c. A.C. With tubes.

2G131 Amplifier less cover. Wt. 22 lbs. . . **47.95**

2G152 Protective cover. Wt. 1 lb. . . . . 2.95



## ALTEC LANSING

The new Altec Lansing A-323-B Amplifier is designed for high quality reproduction of FM radio or recordings. Suitable for fine built-in installations. Flat response within 1 db. from 20-20,000 c.p.s. Full 15-watt power output within 1 db from 35-12,000 c.p.s. Two inputs—one low gain from radio tuner, one high gain with built-in equalization to operate direct from variable reluctance pickup. Stepped low-pass filter gives sharp cut-off of noise frequencies in records, yet allows full reproduction of useable high frequencies. Hum balancing potentiometer to eliminate the necessity of careful selection of tubes for quiet operation. Adjustable base boost. Tubes: two 6J7, 6J5, two 6L6G, and 5U4G rectifier. Dark gray crackle finish. For 110-125 volts, 50-65 cycle A.C.  $9 \times 12 \times 9$ ".

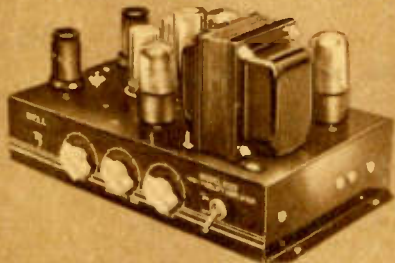
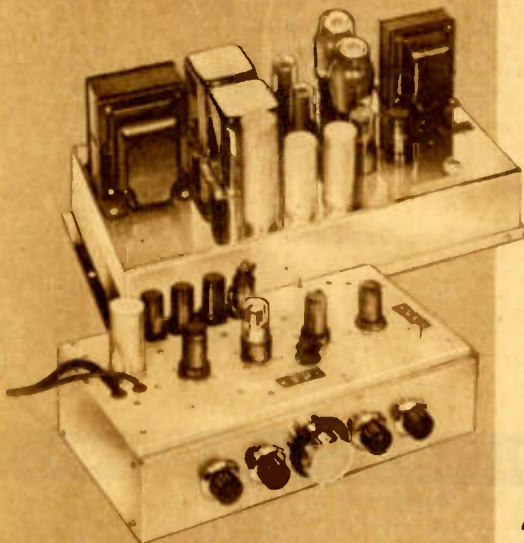
2G405 Shpg. Wt. 25 lbs. **133.**



## THE SCOTT NOISE SUPPRESSOR

Here's the famous Scott Dynamic Noise Suppressor that everyone is discussing! It's designed to reduce record scratch without eliminating the high frequency tones. Used with the included pickup, the suppressor lowers background noise, reproducing the extreme low frequencies without annoying scratch or rumble. Two independent gate circuits reduce noise 20 to 30 db. at high end and 15 to 20 db. at low end. Remote control can be mounted in cabinet; the suppressor can be placed anywhere. Included are tubes, cable and all accessories. High impedance input. Output to match any amplifier. Unit is powered from radio output.  $7 \times 3\frac{1}{2} \times 4\frac{1}{2}$ ".

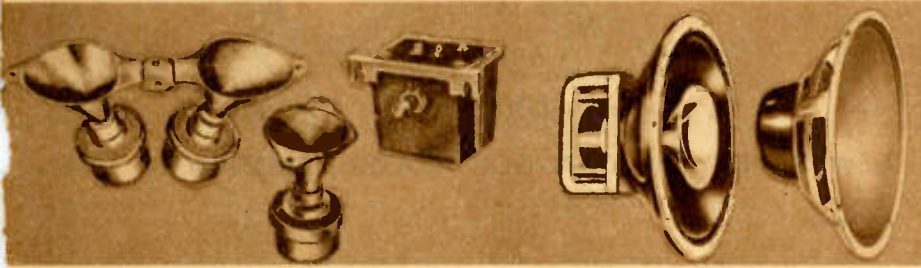
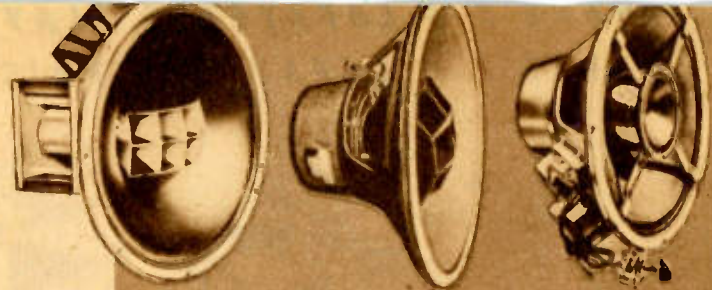
2G403 - Wt. 4 1/2 lbs. . . . . **43.61**





**HIGH FIDELITY**  
 custom assemblies

**DESERVE A HIGH FIDELITY  
 SPEAKER**



**DUAL AND SINGLE TWEETERS**

Now you can make any standard speaker a hi-fidelity component by the quick and easy installation of a tweeter. Designed to reproduce frequencies between 2,000 and 15,000 cps. Recommended for AM or FM receivers, transcription reproduction. Impedance 6-8 ohms, power 12 w. No complicated wiring necessary - requires only the high-pass filter listed below. 9½x2-5/8x5". Shpg. Wt. 4 lbs.

22G21324 Dual Tweeter . . . . . **23.52**

The single tweeter has an impedance of 12 ohms, power of six watts. 4x2¼x5". Freq. 2,000-15,000. No complicated wiring necessary - requires only the high-pass filter described below.

22G21323 Shpg. Wt. 2 lbs. . . . . **11.76**

**HIGH-PASS FILTER**

This high-pass filter is designed for use with the tweeters listed above. It is used in connecting tweeters to the voice coil of any PM cone speaker, without creating electrical unbalance. Easily wired. Has a high-frequency volume control. Cut-off about 2,000 c.p.s. 3½x2¼x2¼".

22G21328 - Shpg. Wt. 2 lbs. . . . . **5.88**

**TRU-SONIC COSPIRAL**

Here's a revolutionary new speaker that is perfect for replacement use! The Tru-Sonic Cospiral speaker has a frequency range of 40-14,000 c.p.s. and a power capacity of 15 watts. Uses 40-oz. Alnico V PM. Input impedance is 8 ohms. There are two acoustical sections: a large molded cone for bass, and an acoustic spiral for high frequencies, giving 90-degree dispersion. Wt. 28 lbs.

22G21314 P52FR, 15-inch. . . . . **47.04**

22G21313 P22FR, 12-inch. . . . . **41.16**

**GE S1201D SPEAKER**

The General Electric S-1201-D speaker was chosen by a famous consumer organization as a "best buy". This newly-designed Alnico V PM speaker is recommended for use with public address systems and for replacement in home radios. When used with one of the tweeters at left and a high-pass filter, you get true, high-fidelity reproduction. Aluminum base voice coil provides higher wattage and will not warp. Molded cone assures a brilliant frequency response. Plated finish protected by new Lusteron treatment. Universal transformer mountings. 8-ohm voice coil.

22G19352 Shpg. Wt. 9 lbs. . . . . **17.35**

**FAMOUS TRU-SONIC P52A COAXIAL**

This splendid high-fidelity speaker combines in a single assembly a 15" bass speaker; a high-frequency speaker with a small, precision-built diaphragm, an 8-cell horn unit, and crossover network that divides highs from lows, channeling each to the proper speaker. High-frequency unit is mounted coaxially with the low-frequency unit. Vertical dispersion of high frequency is 40°, horizontal 60°. 6½ lb Alnico V PM; 13¼" baffle. 20 w power capacity; input impedance 16 ohms; frequency response ± 5 db. from 40-12,000 cps; crossover 1,200 cps cone resonance 55 cps. 15½x10". 22G21315 Shpg. Wt. 35 lb. . . . . **120.34**

**ALTEC LANSING 603B**

This high-quality, high fidelity speaker has a 15-inch bass cone and a 3-inch voice coil. The multi-cellular horn distributes the high frequencies at a horizontal dispersion of 60 degrees, vertical 40 degrees. 25-watt power capacity. Voice coil has 8 ohms impedance. Covers a frequency range of 30-12,000 c.p.s. 15-3/16x7".

22G19395 Shpg. Wt. 21 lbs. . . . . **63.00**

**JENSEN "BEST BUY" SPEAKERS**

A name famous for quality! These Jensen Type J speakers have a cone "tweeter" mounted within the cone of the "woofer." The 15-inch models, JAP-60 and JHP-52, have a 2-channel network and a roll-off control. Frequency range is 50-15,000 c.p.s.; input impedance 500 ohms; 13¼" baffle. JAP-60 has a power capacity of 20 watts; measures 15-1/8x8-1/8". JHP-52 has a power capacity of 16 watts; measures 15-1/8x7¼". The 12-inch model, JRP-40, has bridging network, high-frequency control excluded. Range is 50-10,000 c.p.s.; input impedance 6 ohms; measures 12-1/8x5-5/16"; has an 11-inch baffle, and a power capacity of 40 watts.

22G19007- JAP - 60. Shpg. Wt. 24 lbs. . . . . **55.54**

22G19002- JHP - 52. Shpg. Wt. 23 lbs. . . . . **47.04**

22G19008- JRP - 40. Shpg. Wt. 16 lbs. . . . . **19.60**

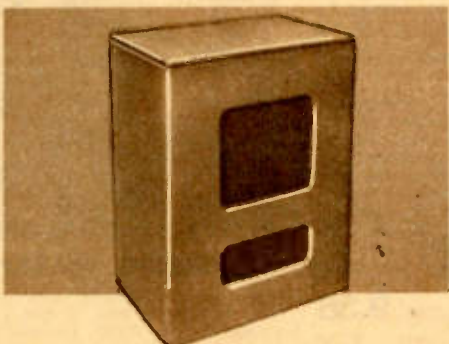
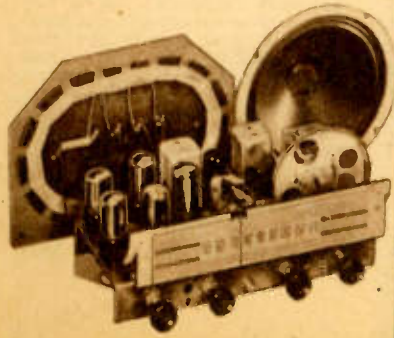
High-frequency Roll-off Control for JRP-40.  
 22G9010. Shpg. Wt. 2 lbs. . . . . **1.76**

**7-TUBE AM CHASSIS  
 10" SPEAKER, ANTENNA**

Save money by building your own! This superhet radio with the included 10-inch speaker, gives you excellent AM reception. Covers the standard broadcast band. Tone control and automatic volume control. Push-pull circuit gives 3 watts output. Built-in loop antenna. Tubes: 6SA7, 6SF7, 6SL7, two 25L6, plus two 25Z6 rectifiers. Slide-rule dial. Size: 8x11-3/8x7".

1G701 Wt. 10 lbs. . . . . **24.95**

1G701 Lots of 3. . . . . **22.95**



**12" AND 15" SPEAKER BAFFLES  
 FINISHED AND UNFINISHED**

These baffles give excellent performance! Made of ¼" plywood, with speaker mounting board, screws, tacks, and acoustic material. Size: 12-inch is 23¼x33-1/8x12-5/8", 15-inch is 25x33¼x13-5/8". Unfinished or Tan Leatherette covered.

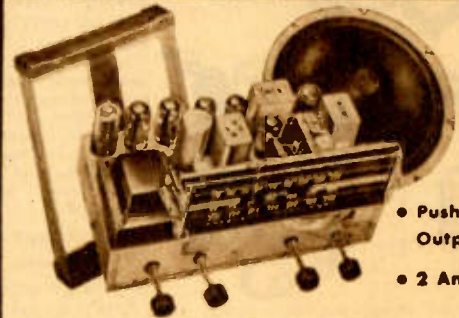
22G22067- 12". Unfin. Wt. 30 lbs. **16.25**

22G22068- 12". Tan Leatherette . . . **19.25**

22G22065- 15". Unfin. Wt. 35 lbs. . . . **19.25**

22G22066- 15". Tan Leatherette. . . . **22.50**

**12-TUBE AM-FM CHASSIS, 12" SPEAKER  
 AUTOMATIC FREQUENCY CONTROL**



- Push-Pull Output
- 2 Antennae

Build your own new FM-AM radio, or modernize your old radio console with this fine-quality chassis, speaker, and antenna. Covers the standard broadcast band and the 88-108 Mc. FM band. Automatic frequency control on FM, full-range tone control, automatic volume control. Wired for phonograph operation. DeLuxe 12-inch Alnico V PM speaker. Eleven tubes plus rectifier. Push-pull beam power output. Indirectly illuminated slide rule dial. Loop antenna for AM; folded dipole for FM. For 105-120 volts 60 cycle AC only. Chassis size: 13x9x9¼". Loop antenna size: 8¼x13¼x1¼". With tubes, speaker.

1G1205 Shpg. Wt. 25 lbs. . . . . **77.50**



**THERE'S A LAFAYETTE PLAYER FOR EVERY KIND OF RECORD  
THERE'S A LAFAYETTE PRICE FOR EVERY KIND OF BUDGET**



List Price 40.75  
"Best Buy" 25.95



List Price 49.50  
"Best Buy" 29.11



List Price 79.50  
"Best Buy" 55.12

**A WEBSTER FOR EVERY SPEED AND NEED NEW 3-SPEED VM CHANGER MARKEL PLAYS BOTH SIDES**

It's easy to transform your radio into an up-to-the-minute modern console combination. The connections are simple and easily made. This changer plays 12 ten or 10 twelve inch records, and is quickly adaptable to play at all speeds. Yes, with this changer, they'll all play, automatically, at one loading. Specially designed "Tilt-o-Matic" tone arm is equipped with two receptacles: one for the GE Standard Reluctance Cartridge for playing 78 RPM and the GE Variable Reluctance Cartridge for playing 33-1/3 RPM. This changer will also play the new 45 RPM records, manually, by use of an included adapter. 14x14x8 1/2". (2 1/4" below plate.) Less cartridges (See cartridge listings below.) Shpg. Wt. 18 lbs.

34G22609 Model 256-27. . . . . **25.95**  
Similar to above but with special cartridge and tandem needle for 78 and 33-1/3 RPM. Also plays 45 RPM manually.

34G22592 - Shpg. Wt. 18 lbs. . . . . **31.53**  
Model 156-27. Single speed 78 RPM with GE Rel. Cart.

34G22502 - Shpg. Wt. 17 lbs. . . . . **26.58**  
Model 156-1. Single speed 78 RPM with Std. Xtal Cart.

34G22500 . . . . . **24.52**

**WEBSTER NYLON TANDEM NEEDLES**

Replacement for Webster 2-Speed Changer. Model NE214.

34G126 . . . . . Each **5.50** In lots of 10. . . **2.75** (each)  
Model NE215. All metal.

34G127. . . . . Each **4.00** In lots of 10. . . **2.00** (each)

Now you can enjoy all records played at all speeds - and at a very minimum of effort. Three speed motor plays 78 or 33-1/3 LP. Records automatically, and 45 RPM manually. Simple bushing supplied to adapt 45 RPM Records. The changing cycle is quiet - it is quick - takes less than 4 seconds. The records are gently lowered on the spindle step. The single tone arm returns to rest and control knob moves to OFF after the last record plays. Includes dual needle reversible cartridge and single knob speed control. Intermix feature permits playing ten 12" or twelve 10" records.

Beautifully styled, built for years of trouble-free, long-playing performance. No adjustments necessary - all moving parts are adjusted at the factory. Fits into the cabinet of any make or size radio-phonograph combination that has the conventional one-side record player. Plays 10 twelve or 12 ten-inch records. 15 x 15 x 10". Wood finish base cabinet for simple attachment to radio.

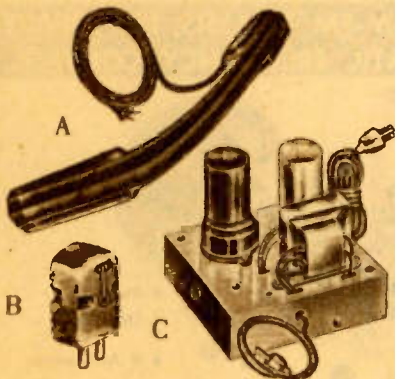
34G22607 Model 8020 **29.11**  
34G22608 - Model 802 Same as above, less base. **27.34**

Here is a new triumph in engineering featuring a record player that plays both sides of all records continuously - without interruption - and at a price you can afford! A completely new mechanism makes this record changer unique. No extra handling of records, no scratching or chipping or breaking records: both sides of each record are played without turning it over or you can play only one side in sequence. Whether your records are marked D, DM, M, or MM: stack them and the Markel Duo Playmaster will play them in proper sequence and with full true tonal reproduction.

Improved push-off post type record mover prevents records from chipping. The records do not drop - they roll off the exclusive rubber wheel mechanisms so they cannot break. The Playmaster automatically stops and shuts off when the last record is played. Has automatic eject control. Handsomely finished walnut and maple. For standard 78 RPM records.

34G22606 Wt. 20 lbs. Model 71 **55.12**  
Model 70. Same as above, less base. Requires 6 V transformer listed below.  
34G22601 - Shpg. Wt. 20 lbs. . . . . **50.71**  
6G1502 - 6 V transformer. . . . . **.98**

**NEW IMPROVED GE PHONO ACCESSORIES,  
STANDARD AND LP BOTH WITH  
GE VARIABLE RELUCTANCE CARTRIDGE**



34G108 - Replacement needle for LP cartridge. . . . . **2.06**

34G107 - Replacement needle for standard cartridge. . . . . **2.06**

(B). GE PICKUP ARM, with either standard or LP cartridges above. Plays 10 or 12" records. Can be used with any non-automatic record changer. Factory balance for proper stylus pressure, which can be adjusted if desired. Simple to install. Single hole mounting. 24" lead, mounting rest and mounting template supplied.

34G13502 with LP Cart. **9.38**  
34G13501 with Std Cart. . **9.38**

(C). SELF POWERED PRE-AMPLIFIER for use with cartridges and pickups above. Operates from 115 v., 60 cyc. AC. Uses 1 6SC7 tube in equalizing circuit, plus rectifier. Includes input jack for cartridge, 14" output lead with phono plug. 3-5/8x3-5/8x1 1/4". With tubes. Shpg. Wt. 2 lbs.

34G13473. . . . . **9.38**  
Same as above, less rectifier. Obtains fil. and plate power from receiver or amplifier. Wt. 2 lbs.  
34G13465 . . . . . **5.82**

(A). Uses a replaceable needle, saving money for you on replacements. Retains all its usual superb features: 11 microvolt output at 1000 cps. Size: 1-21/32 x 3/4 x 9/16". Complete with needle. Shpg. Wt. 8 oz. Needs pre-amp below.

34G13485 For LP records. **5.85**  
Same as above, but for standard 78 RPM records. 3/4-1/4 oz. needle pressure. With needle.  
34G13500 . . . . . **5.85**



"Best Buy" **37.95**  
List Price **63.00**

**PORTABLE DUAL-SPEED RECORD PLAYER**

Now, you can carry your entertainment with you. Pack a few standard 78 RPM records and some Long Playing 33-1/3 RPM records and get set for hours of entertainment. This handsome brown alligator-type covered portable plays both the standard and LP records. Two fine pick-ups: a Shure LP and a Webster Standard insure perfect tonal reproduction. Three tube amplifier with a dual channel tone control and inverse feedback for maximum volume with the minimum of distortion. Complete with 6 1/2" Alnico speaker. Size: 14 1/4 x 15-5/8 x 7 1/4".

34G22681 . . . . . **37.95**



"Best Buy" **16.95**  
List **28.00**

**LC LOW-COST PLAYER STANDARD SPEED**

It's light and handy to carry, and its tonal qualities are comparable to the much higher priced consoles: no wonder that this record player is such a hit with everyone. You'll get hours of entertainment for yourself and your friends with this high quality instrument. Airplane-type luggage carrying case finished in durable two-color leatherette. Lightweight, makes carrying easy and comfortable. Bright contrasting metal fittings and heavy duty plastic handle. Large PM speaker for full range tone quality. Amplifier uses 50L6 tube and 35Z5 rectifier. 110 v. 60 c.

34G22672 - Wt. 10 lbs. **16.95**





# LAFAYETTE'S "BEST BUY" IN AN 18 WATT MOBILE SOUND SYSTEM

## It's a Dual-Purpose System for Sound Truck or Indoor Use



Sound equipment to meet your needs—indoors or outdoors, high or low power, mobile or stationary—you'll find just what you want at Lafayette-Concord. Choose the equipment designed to fill your

requirements. You'll be amazed at the dollar-saving price, the ease of operation, the rich reproduction of voice and music, whether you buy a single amplifier or a complete matched system.

### 18 WATT MOBILE SYSTEM

Good weather, bad weather...this Deluxe mobile sound system operates the year 'round. The all-weather, hermetically-sealed projectors and driver units keep going in rain or wind. Modern 18-watt amplifier with built-in phonograph will operate on 6 volts DC in your sound truck or on 110 volts AC indoors. And the price for the entire system is 'way under what you'd expect! Projectors are fitted with universal mountings, permitting placement on sound trucks, speakers platforms, field tripods, roofs or towers. High-efficiency projector design assures strong, clear coverage of area.

System is complete—just set up amplifier, mount projectors, and plug in. Includes 2G169 mobile 18 watt amplifier (guaranteed for one year), two 21" projector horns, 70' superpower cable and plugs attached, and a Turner Han-D-Dynamic microphone (A) with 20 ft. of cable and plug attached. Complete with tubes.

2G172 Shpg. Wt. 84 lbs. . . . . **155.85**

Same system as 2G172 above, but with Electro-voice 910-20 microphone (B) instead of Turner Han-D-Dynamic.

2G173 Shpg. Wt. 84 lbs. . . . . **151.35**

### A LAFAYETTE SPECIAL—THE SMALL AUDIENCE MOBILE SYSTEM Small, Compact . . . Operates from a Car, Truck or Bus Battery

#### 6 WATT MOBILE SYSTEM

If you're looking for a public address system to reach the smaller audience, this budget-priced combination will suit both your job and your purse. It has everything you need for an installation where great volume is not required—a 6-watt amplifier, microphone, speaker, and cable. This system operates on a 6-volt automobile battery, making it just the thing for mounting in a motor vehicle or at outdoor locations.

It's ideal for street announcing or sightseeing lectures in buses, police and safety squad work, and for music recitalists, demonstrators, street vendors, pitchmen, or hucksters. Everyone finds his own application for this handy little system. The microphone may be held in the hand, mounted on floor or desk stand, or hung on a suspension hook when not in use. Loudspeaker included with the system gives a clear sound output to overcome distracting outdoor noises of automobiles and crowds. Amplifier is of compact design, allowing it to be mounted in a out-of-the-way spot. System includes the new 2G174 6-watt, 6-volt mobile amplifier; a University IB8 speaker of high projecting power; a Turner Han-D Dynamic microphone; and 25 ft. of speaker cable.

2G183 — Shpg. Wt. 38 lbs. . . . . **64.91**

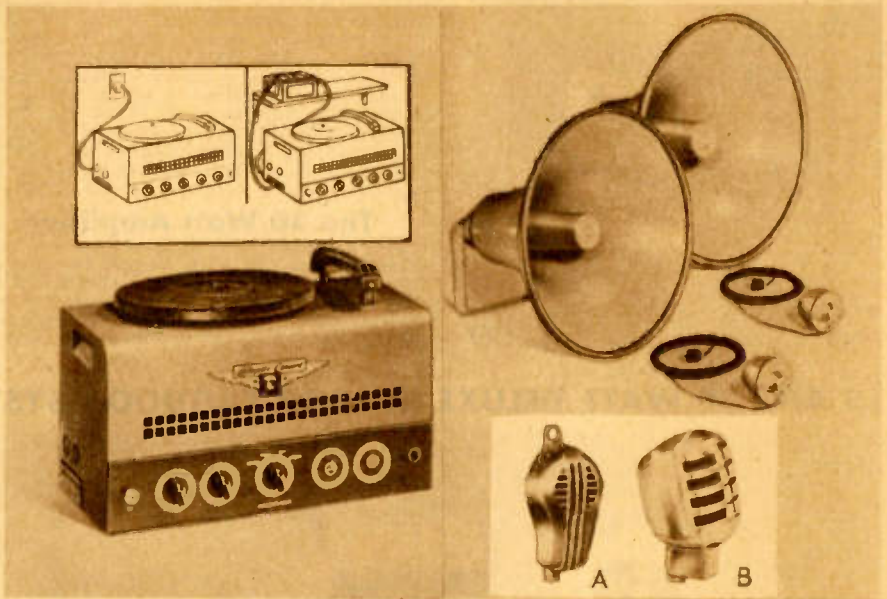
#### CAR TOP HORN CARRIER



Constructed of waterproof plywood and angle iron, the carrier is easily mounted with gutter hooks and adjustable straps. Four suction cups protect the top of your car. Dimensions 8x46 1/2".

22G20028 Shpg. Wt. 8 lbs. . . . . **4.63**

LAFAYETTE WILL NOT BE UNDER-SOLD!

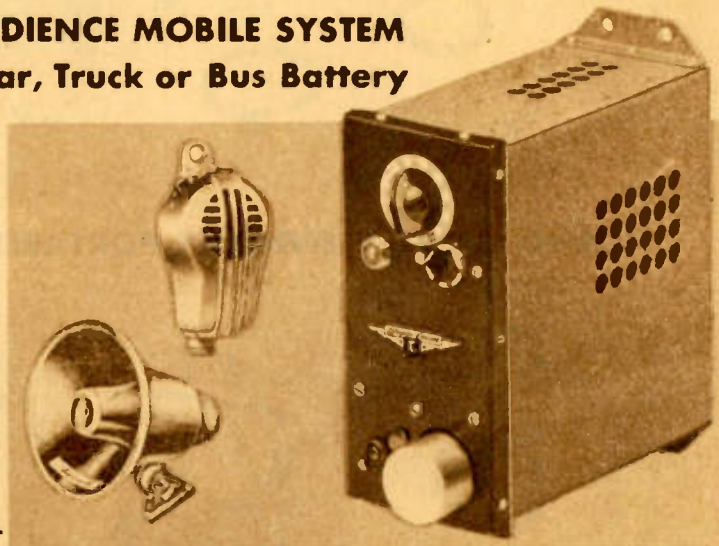


#### Amplifier Used in the System Shown at the Left

OUTPUT: 18-w. norm.; 22-w. peak  
RESPONSE: 30-12,000 cps ± 2db  
GAIN: Mike 118db; Phono 78db  
OUT. IMP: 4,8,15,277 ohms (70v).  
PWR. CONSUM: 85 w. at 110v. AC,  
11.5 amps at 6 v. DC  
TUBES: 2-6SF5, 1-6SL7GT,  
2-6V6GT, and 1-7Z4.  
TWO INPUTS: TONE CONTROL  
PHONO: Built-in. On-off swch.  
DIMENSIONS: 18"x9 1/2"x8 1/4".

Operate this handy amplifier indoors and out! It works equally well on 6 volts in a sound truck or 110 volts from an AC main. Don't worry about a burnout! Voltage switching is automatic. Built-in phonograph is easy to use. Frequency selector gives choice of tone range to suit operating conditions. With "idling" control, you can cut plate voltage from a remote position, saving current when operating "standby" on 6 volt DC. Grey wrinkle finish with Burgundy control panel. Complete with power cables, tubes, and built-in phonograph.

2G169 Shpg. Wt. 45 lbs. . . . . **75.26**



#### Amplifier Used in the System Shown at the Left

POWER OUTPUT. . . . .6 watts.  
RESPONSE. .Optimum Speech Range.  
GAIN. .109 db. for crystal or dynamic high-impedance microphone.  
OUTPUT IMPEDANCE. .4,8,15 ohms.  
TUBES. .2-6SF5, 1-6L6GA, 1-6X5GT.  
DRAIN. .6.5 amps at 6 volts DC.  
DIMENSIONS. .7" H, 3 1/2" W, 8" D.  
FINISH. .Grey with Burgundy panel.

Conservatively rated at 6 watts, this compact amplifier operates on regular 6-volt auto battery. Mounts in any position with two movable mounting brackets. Jack on front panel conserves plate supply during idling periods. With battery cable, speaker plug, and tubes. Guaranteed for one full year.

2G174 Shpg. Wt. 15 lbs **32.25**





## LAFAYETTE 15 AND 30 WATT DELUXE AMPLIFIERS

### Top Quality, "Best Buy" Price—Guaranteed for a Year

#### The 15 Watt Amplifier

OUTPUT 15 w at 5% or less distortion; 25 w peak.  
 CHANNELS 2 Mikes, 1 Phono; or 1 Mike, 2 Phonos.  
 INPUT IMPEDANCE All channels high impedance.  
 GAIN Microphone inputs 120 db. at 3 megohms.  
 Medium gain inputs 70 db. at 5 megohms.  
 SEPARATE BASS AND TREBLE CONTROLS.  
 HUM & NOISE Mike channels 55 db. below 15 w;  
 Medium gain channels 65 db. below 15 w.  
 FREQUENCY RANGE 30 to 15,000 cps  $\pm$  2 db.  
 OUTPUT IMPEDANCES 2,4,8,16,333 & 500 ohms  
 TUBES 2-6S17, 1-6SC7, 2-6L6, and 1-5Y3GT.  
 LINE DRAIN 85 w, 117 volts; with phono top 105 w  
 DIM. 14x8 $\frac{1}{2}$ x9 $\frac{1}{2}$ "; with phono top 11 $\frac{1}{2}$ " high.

#### The 30 Watt Amplifier

All specifications same as 15-w amplifier except;  
 OUTPUT . . . . .30 watts normal, 40 watts peak.  
 OUTPUT IMPEDANCES 2,4,8,16,167, & 500 ohms.  
 HUM & NOISE . . . . .60 db. below 30 watts.  
 TUBES 2-6S17, 6SQ7, 6SC7, 2-6L6, 6X5, 5U4G.  
 LINE DRAIN 130 w, 117 v; with phono top 150 w.

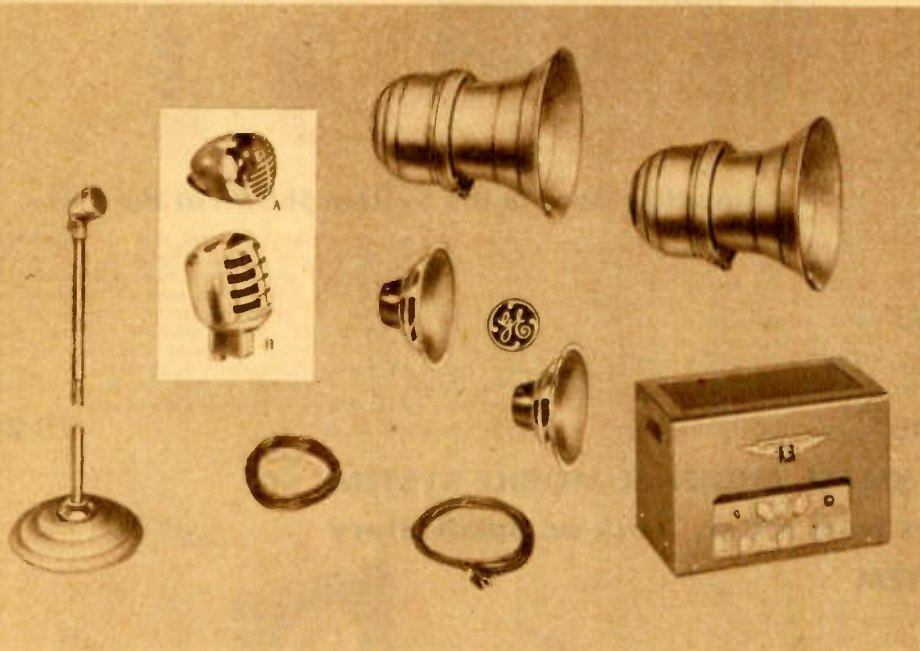
Top panel, complete with a phono motor, turntable and pickup head, is designed to replace the easily-removed top panels of the 15 and 30-watt amplifiers. Ventilated.  
 2G133 Shpg. Wt. 9 lbs. . . . . **11.50**

Whether you want 15 or 30 watts, one of these Deluxe amplifiers will give you high-fidelity sound reproduction at an amazingly low price. They are built with precision from fine quality parts. These two Deluxe amplifiers incorporate the latest engineering designs. Separate bass and treble tone controls make for balanced tonal quality. Inputs for two mikes and one phono or two phonos and one mike. Complete with tubes and instructions. Guaranteed for one full year.



2G129 15-Watt Model. Wt. 22 lbs. . . **36.90**  
 2G130 30-Watt Model. Wt. 25 lbs. . . . **54.70**

## 15 AND 30 WATT DELUXE INDOOR-OUTDOOR SYSTEM



### The 15 Watt System

Complete permanent indoor-outdoor system—ready to go! Just plug it in and you are in operation. This system is built around the 15-watt Deluxe amplifier shown above that is guaranteed for one full year. Two 12-inch General Electric 25-watt PM speakers are already mounted in 20-inch horn-type baffles, ready to defy the rain and wind. Included are 70 feet of speaker cable, Shure Model 707A20 microphone (A) has 20 ft. of cable and floor stand. Complete with tubes.

2G179 Shpg. Wt. 85 lbs. . . . . **87.30**

15-Watt Permanent In-and-Outdoor System—same as 2G179 but with Electrovoice Model 610-20 mic. (B) instead of Shure 707A20.

2G180 Shpg. Wt. 85 lbs. . . . . **92.75**

### The 30 Watt System

A 30-watt amplifier gives this system greater audience coverage! This ready-to-operate system includes the 30-watt Deluxe amplifier and all components of No. 2G179 (above).

2G181 Shpg. Wt. 88 lbs. . . . . **105.35**

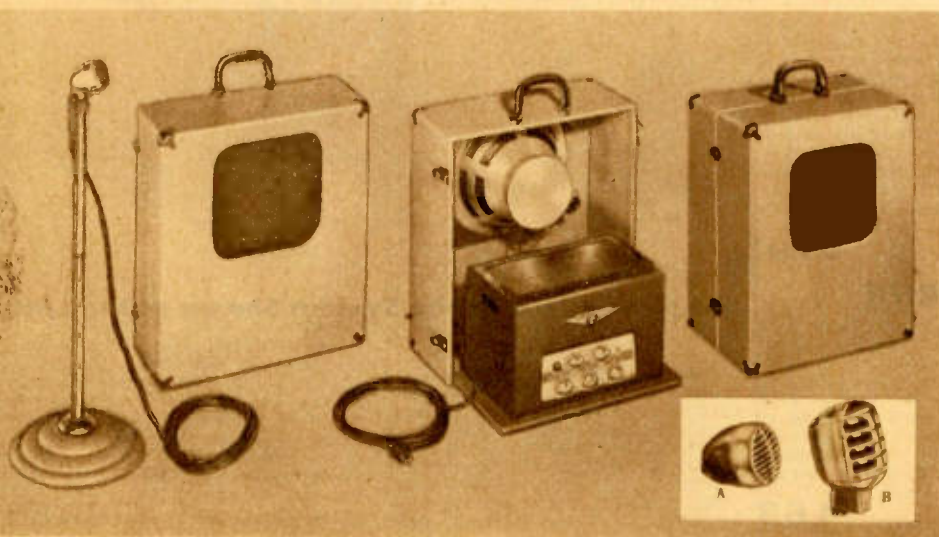
30-watt In-and-Outdoor System—same as 2G181 above but with Electrovoice model 610-20 microphone (B) instead of Shure 707A20.

2G182 Shpg. Wt. 88 lbs. . . . . **110.95**

Sturdy bracket with base for mounting 20-inch steel projector horns of the above permanent in-and-outdoor systems. One bracket is required for each projector horn.

22G20078 Shpg. Wt. 12 lbs. . . . . **2.26**

## 15 AND 30 WATT EFFICIENT PORTABLE SYSTEM



### The 15 Watt System

This complete portable system is easy to move! Two speakers and 15-watt amplifier are all carried in one case, with amplifier mounted on sliding panel. Includes 15-watt Deluxe amplifier above (guaranteed for one full year), two speakers, Shure model 707A20 microphone (A), and floor stand. Complete with tubes, 70 ft. of speaker cable, 20 ft. of microphone cable, and instructions.

2G134 Shpg. Wt. 70 lbs. . . . . **77.75**

15-watt Portable System—same as 2G134 above but with Electrovoice model 610-20 microphone (B) instead of Shure 707A20.

2G136 Shpg. Wt. 70 lbs. . . . . **81.75**

### The 30 Watt System

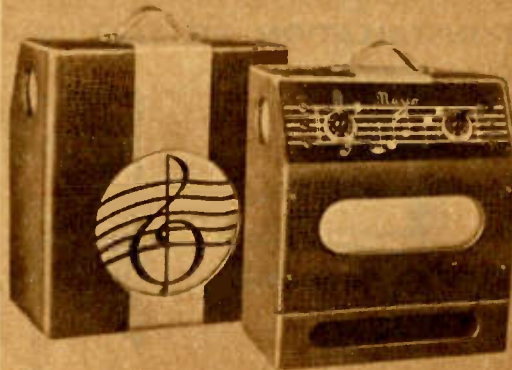
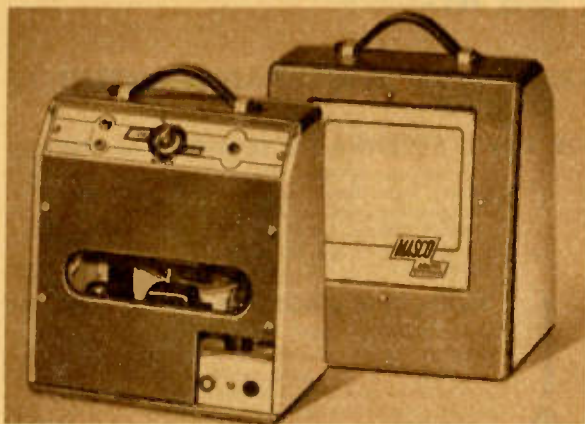
Easily portable, yet with 30 watts for greater audience coverage! Includes 30-watt Deluxe amplifier and all the components of No. 2G135 above. 18x14 $\frac{1}{2}$ x23".

2G137 Shpg. Wt. 78 lbs. . . . . **95.75**

30-watt Portable System—same as 2G137, but with Electrovoice model 610-20 microphone (B) instead of Shure 707A20.

2G139 Shpg. Wt. 78 lbs. . . . . **100.75**





## MUSICAL INSTRUMENT AMPLIFIERS—MASCO PORTABLE MODELS New Designs, Built-In Speakers, Lafayette "Best Buys"

### 5 Watt Musical Instrument Amplifier

Here is a complete musical instrument amplifier system in one light-weight, easy-to-carry, portable case! Just the thing for musicians, lecturers, singers and circus barkers. High-fidelity amplifier and heavy-duty 8-inch PM speaker insure sparkling clarity in musical reproduction. Full 5-watt output gives powerful, room-filling volume. Extremely low hum level 60 db. below rated output. Power gain of 105 db. Dual channel inputs accommodate any standard electronic instrument pickup or microphone...permit mixing of singing with orchestra or other instrumental music. Tubes: 6V6GT, 6SL7GT and 6X5GT rectifier. Circuits are safely fused. Sturdy hardwood carrying case is covered in smart, two-tone, blue and gray fabrikoid. For 117 volts 60 cycle AC only. Complete with tubes. 11 $\frac{1}{2}$ x13x8 $\frac{1}{2}$ ". Wt. 15 lbs.

2G338 33.00 less cash discount, your net . . . . . **32.34**

### 15 Watt Musical Instrument Amplifier

Unsurpassed for accurate reproduction, this fine new 15-watt musical amplifier is being used by discriminating musicians everywhere. The three inputs allow use of three instruments or two instruments and a microphone. Latest-design amplifier and large 12-inch speaker give full 15-watts of undistorted power...realistic reproduction of reeds and strings. Power gain of 110 db. Frequency response plus or minus 3 db. from 50 to 12,000 c.p.s. Acoustically-designed case. Separate volume and tone controls are conveniently located on sloped panel at top. Tubes: Two 6SL7GT, two 6L6G, and 5Y3GT rectifier. Amplifier and speaker housed in compact case covered in brown alligator fabrikoid with contrasting tan saddle stripe. For 105-125 volts, 60 cycle AC only. Shpg. Wt. 28 lbs.

2G342 59.70 less cash discount, your net. . . . . **58.51**

### MUSICAL CONTACT MICROPHONES FOR USE WITH ANY AMPLIFIER

Hi-impedance pickup, for use with any musical instrument, gives brilliant tone. Easily installed. No special strings or changes. Soft, non-marring material. 8-foot cable.

G13746 (A) Less volume control. Shpg. Wt. 4 lbs. . . . . **5.25**

G13745 (B) With volume control. Shpg. Wt. 4 lbs. . . . . **.6.85**

### LAFAYETTE 8-WATT PORTABLE SYSTEM

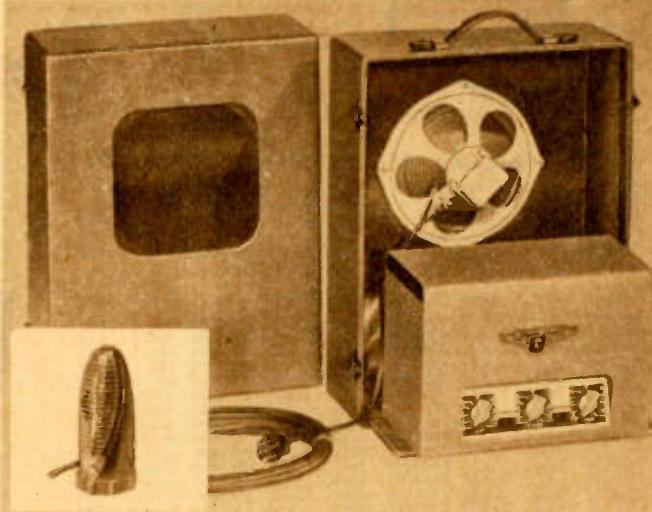
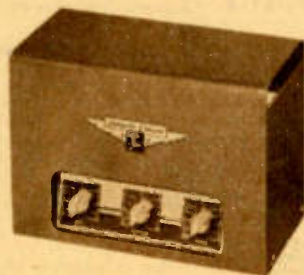
**Provides Flexibility with High Quality in Low Power Equipment**

This super-portable sound system is just the thing for store demonstrators, music recitalists, lecturers, pitchmen, circus barkers, and others not requiring great audience coverage. It covers areas of 7,500 to 15,000 sq. ft. and audiences up to 800, depending on background noise. Separate microphone and phonograph inputs and controls permit you to use recorded music as a background to your announcements. Built-in amplifier will operate indefinitely at normal power and at more than 50% overload for short periods without harm. All components are mounted in a single light-weight, two-piece, easy-to-carry case 13x10-5/8x17", covered in tan simulated rawhide. Includes 8-watt amplifier shown at right, mounted on removable platform; Shure "Versatex" crystal microphone with 7 ft. of cable and plug; two 8-inch PM speakers with 70 ft. of cable and mounted in the carrying case ready to plug into the amplifier. Complete with tubes.

2G159 Shpg. Wt. 28 lbs. . . . . **44.85**

As above, but with single speaker installed in case, and 35 ft. cable.

2G158 Shpg. Wt. 25 lbs. . . . . **38.45**



### This is the Amplifier Used in the System Shown at the Left

OUTPUT. . . . 8 watts normal; 12 watts peak  
GAIN AND INPUTS. . . Mic. 105 db., 2 megohms  
Phono 75 db., 1/2 megohm  
FREQ. RESPONSE. . . 50-10,000 c.p.s.  $\pm$  2 db.  
CONTROLS. . . . . (3) Mic. Phono, Tone  
TUBES USED. . . . . 6L6G, 6BC7, 5Y3  
OUTPUT IMPEDANCE. . . . . 4 and 8 ohms.  
POWER CONSUM. . . . . 70 watts at 117 v. 60 c. AC  
DIMENSIONS. . . . . 7x10 $\frac{1}{2}$ x5 $\frac{1}{4}$ "

This 8-watt amplifier is designed especially for users requiring a high-quality, small audience coverage amplifier. Frequency response is flat ( $\pm$  2 db.) from 50 to 10,000 cps. Tone control. Separate microphone and phonograph controls allow blending of voice and music. Inverse feedback in circuit. Illuminated panel. With tubes and plugs.

2G157 Shpg. Wt. 12 lbs. . . . . **21.45**

**LAFAYETTE WILL NOT BE UNDER-SOLD!**

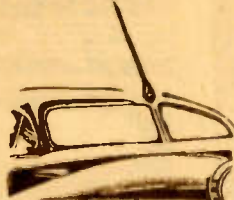


# "Best Buys" in Auto Radio Parts and Accessories

## FOR REPLACEMENT-INSTALLATION RELIANCE "UNIVERSAL TYPE" AUTO RADIO ANTENNAS

### COWL OR FENDER MOUNT BARGAIN

A three-section cowl or fender antenna extends to 65 inches. Heavy chrome finish, sturdy rustproof construction. Has wonderful pick-up with minimum noise. 36 inch moisture-proof lead-in and a bayonet adapter for lead are included with antenna. Shpg. Wt. 2 lbs.



For Buicks and other cars using similar windshield mount antennas. 3 sections, 36" max. length. Easy to mount. Triple chrome brass, static tip.

### NEW BARGAINS IN HI-QUALITY AUTO SPEAKERS



- A. RE-MOTE AUTO SPEAKER.** New rear-seat auto speaker with volume control allows rear-seat passengers to enjoy radio programs without discomfort to front-seat passengers. 5" speaker in "upholstery" gray plastic. 22G19107 - Shpg. Wt. 2 lbs. **6.37**
- B. AUTONE AUXILIARY SPEAKER.** Large 6" PM auto speaker mounts in shelf behind rear seat. 3-way dash control switch permits using either or both front and rear speakers. Wire, escutcheon plate, grill included. 22G19106 - Shpg. Wt. 3 lbs. **5.88**
- C. HI-QUALITY AUTO SPEAKERS.** These speakers are ideal for auto replacement. Field coil type, 6 v. 99G7024 - 6" Speaker. Shpg. Wt. lbs. **2.39**  
 99G7025 - 7 1/2" Speaker. Shpg. Wt. lbs. **2.49**  
 99G7026 - 8" Speaker. Shpg. Wt. lbs. **2.59**

### NEUTRALIZING POWDER



Simple injector and bags of anti-static powder. When injected into tire, eliminates car radio static. Uses filling station air pressure to inject powder. 27G15586 Injector only. **78**  
 27G15581 Powder only for 5 tires. **49¢**

### MALLORY REPLACEMENT VIBRATORS

Battery replacement vibrators for auto radios and battery operated household receivers. Precision made, Mallory vibrators are noted for their long life and trouble-free service. All vibrators are rated at 6 volts except types W245A and W246 are rated at 4 volts and T4000, T4002 and T4003 are rated at 2 volts.

NO.	TYPE	EACH	NO.	TYPE	EACH	NO.	TYPE	EACH
27G6114	222...	4.88	27G6136	294...	2.62	27G6085	853...	2.62
27G6096	245...	4.12	27G6137	298...	3.38	27G6086	854...	2.62
27G7278	245A...	4.12	27G6093	505P...	2.62	27G7276	859...	2.62
27G6088	245C...	4.12	27G7285	506P...	3.38	27G6076	860...	2.62
27G7280	W245A...	4.12	27G6077	509P...	2.20	27G7293	870...	2.62
27G6097	246...	4.12	27G6073	514...	4.12	27G7296	901M...	2.21
27G7281	246A...	4.12	27G6074	716...	4.12	27G7287	903M...	2.20
27G6168	W246...	4.12	27G6062	725C...	4.56	27G6079	952W...	4.12
27G6098	248...	4.12	27G6107	742...	4.12	27G6080	953W...	4.12
27G6171	248...	4.12	27G7289	743...	4.12	27G6081	954...	4.12
27G6130	273C...	4.88	27G6063	825C...	3.67	27G7273	1501...	3.38
27G6167	273D...	4.88	27G6108	826C...	3.38	27G7271	T4002...	5.70
27G6135	292...	3.38	27G7292	839...	3.38	27G7272	T4003...	5.23
			27G6084	852...	2.62			

### MALLORY REPLACEMENT GUIDE

Includes alphabetical listing of radio and vibrator power supplies by mfg. and model number. Gives Mallory replacement in each case. Also how to install 1946-47 auto radios. No charge with purchase of Vibrator. 23G19993 **15**

### NEW! MALLORY VIBRATOR DATA BOOK

A complete Technical manual on the operation and application of vibrators. 23G19992 **98**

### SIDE COWL ANTENNA 3 SECTIONS 66 INCHES

A. Bargain special, three section triple chrome plated side cowl auto antenna. Stainless steel rod section and tapered solid brass tubing. 25 to 66" tubing. Insulated against signal shorting. Complete with 32" cable and mtg. hardware. 99G9596 **1.69**

### TELESCOPIC—ADJUSTS TO ANY ANGLE

B. 3 section, 56". Single hole mount on any contour. Ball swivel with locking point permits any angle adjustment and positive lock. Excellent pick-up. Shielded 36" lead-in, bayonet adapter. Rustless chrome plated. 27G22007 **2.59**

### THE DISAPPEARING ANTENNA

C. 3 sections, 56". Telescopes to 4". Triple chrome plated brass, bakelite insulated. 48" coax. lead-in, bayonet and swivel connectors. 27G22009 **3.09**

### LC "BEST BUYS" IN GENERAL REPLACEMENT PARTS



**AUTO GENERATOR CONDENSERS.** Here's a real saving in standard auto radio condensers, at a Lafayette-low price. They are well-made, fully shielded, designed to eliminate generator noise in car radios. Dirt and moisture proof for long-lasting service. No. Mid. Ea. 10 for 27G14220 .25 25¢ 2.25  
 27G14215 .5 27¢ 2.43  
 27G14216 1.0 39¢ 3.50



**WHEEL STATIC ELIMINATOR.** This handy device eliminates front wheel static in auto radios. It's easy to install! All you have to do is place one in each hub cap of your automobile. All rustproof construction. 27G5294Ea. **8**  
 10 FOR **.72**



**A. ANTENNA CONNECTOR.** Two-piece metal container, fibre insulation. 27G16714. **6**  
 10 FOR **.54**

**B. AUTO RADIO SUPPRESSOR.** Elbow cable type, spark plug noise suppressor with black, molded case. X211 **8**  
 10 FOR **.72**

### CONVERT FITTINGS EASILY, QUICKLY WITH ADAPTORS



- A. 27G16715—Lead-in Adapter. Converts Delco to Motorola fitting. **16**  
 B. 27G16716—Motorola Pin Plug. **6¢**  
 C. 27G16717—Motorola Shielded Jack. **12¢**  
 D. 27G16718—Adapter. Converts Motorola Pin Plug to Delco type. **5¢**

### VIBRATOR SPECIAL!



Amazing value in a vibrator replacement brought to you by Lafayette's tremendous purchasing power. 12-volt, 4-prong, non-synchronous. Replaces the Mallory G826 or equivalent. Can size, 1 1/2" diam., 3 1/4" ht. 99G3970 **39**



Here's the celebrated Mallory vibrator at a give-away price! M561C replacement vibrator. 5-prong base, 24-volt battery synchronous vibrator. Long-life and trouble-free service. Can size: 1 1/2 x 3 1/4". 99G3967 **39**

### VIBRATORS TRANS



Primary 24 V CT. Sec. 300 V CT, 60 ma. Case sealed metal. Eight 5/32" mtg. holes 3/4 x 3/2-5/8". 99G5097 **49**

### BIG BARGAINS IN VIBRATOR REPLACEMENTS

High-quality vibrator replacement for General Electric 2-volt sets, Model 530. A real bargain price!	Stk. No.	Replaces	Mallory	Radiart	Price
99G3969 <b>1.25</b>	99G3950	"	294-901M	5300	<b>1.19</b>
	99G3951	"	854	5331	
	99G3952	"	505P	5320P	
	99G3953	"	249	5406	
	99G3954	"	246	5411	
	99G3958	"	245	5409	



**NEED LOW COST TOOLS AND ACCESSORIES?**  
**These "Best Buys" Speed Your Work and Save You Money**

**JUST PLUG IN THIS ALL-PURPOSE VIBRO-SPRAYER**



Even amateurs can produce a professional looking paint job with this self-contained spraying unit. Specially designed to permit one-hand operation — and is complete in itself. Screw-top jar has a 24 ounce capacity. Equally adaptable for spraying other liquids, such as light oil, insecticides, D.D.T., etc. as well as paint. Here is a finely made sprayer that will last for years and years, giving you excellent service and results. Uses 110 volts AC.

18G15619 List Price \$12.95 . . . . . **9.75**  
 In lots of 6. . . . . **7.80**

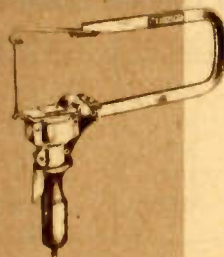
**WELLER SOLDER GUN; HEATS, COOLS IN 5 SECONDS**



The Weller Pistol-Grip Solder Gun will become one of the most useful tools in your workshop. Handy and light, this speed iron takes only five seconds to heat and be ready for use. No worries, either about burns or fires: when finished with your work, disconnect, and the tip will be cool in another five seconds! Has a built-in spotlight for lighting up tight corners and dark places. 100 w., 115v., 60cyc. AC.

18G15183 Weight 3 lbs. . . . . **12.69**  
 18G15186 With dual heat 100-135W **14.65**  
 18G15187 Long-life tips. Set of 4 . **25**  
 18G15188 Studs for fastening tips. . **10**

**HANDY, LOW-COST ELECTRIC SAW, ONLY 5.85**



As safe to use as a hand saw — electrically operated — just guide it! Lightning fast — makes 7200 strokes per minute. Saws sideways, back, and forth. The only electrically-driven hand jig saw on the market, and the most versatile tool in the workshop. Saws the most intricate patterns, cuts at any angle, works on assembled projects. Automatic switch in handle instantly stops, starts motor. For 50/60 cycles AC. With cord and plug. Wt. 2 lbs.

18G15352 Complete with 3 blades. **5.85**  
 18G15353 Extra blades. Package of 12 . **60**

**5-PIECE WRENCH SET**



New Sampson small opened wrench set with ten different openings — no duplication of sizes. Made of drop-forged tool steel. 1/4 to 7/8 sizes — marked.

18G14987. . . . . **1.23**

**HANDY STANCOR SLIDE-RULE**



Stancor's last word in slide rules! 4 place logarithm table of natural trig functions, signs and limits of values, trig formulae, settings, equations, etc.

99G703 . . . . . **49**

**STURDY, SMALL-PARTS MULTI-DRAWER**



Convenient and economical storage for fittings and small parts. Each unit is constructed with tongue and slot to interlock with other units at top, bottom, and sides. Units may be fitted and securely locked around existing fixtures for economy of space. Wt. 10 oz.

18G22381 10 for 3.60. . . . . Each **40**

**SMALL PARTS DRAWER CABINET**

Attractive, impressive, practical in design. Embossed cabinets fit securely when stacked in multiple units. Drawers are 8x10 1/2 x 1 1/2", each with card holder and removable partitions to furnish 2 to 12 compartments per drawer. Made of heavy gauge steel with no sharp edges. 7 1/2 x 8 1/2 x 10 1/2".

18G22351 — Wt. 9 lbs. (Brown) **5.25**

**5-IN-1 TOOL SET**



Cadmium plated steel shank. Handle stores four socket tips in assorted sizes: 5/16", 3/8", 7/16", and 1/2". Also, handle contains one 1/4 x 3/64" screwdriver tip.

99G6985 — Shpg. Wt. 2 lbs. . . . . **69**

**ALL-AROUND EFFICIENT LIGHT-DUTY DRILL**

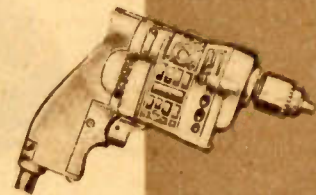
This new Champion lightweight drill is expressly designed for light duty or intermittent service. It is equipped with an extremely efficient motor with "Oilite" self-lubricating bearings and special alloy steel gear insures economical professional service. Contains several streamlined features, such as the firm pistol grip for ease in handling and the recessed thumb control switch for instantaneous on off duty. 1 1/4". Easily adaptable for polishing, buffing, etc. Wt. 4 lbs.



18G15798 . . . . . **28.00**

**POWER-PACKED THOR DELUXE 1/4" DRILL**

Here's a drill that's tops in sturdy construction with smooth-running ball bearings throughout. It has a free speed of approximately between 1900 and 2000 RPM. Contains a two pole trigger switch in the handle. Firm grip handle is moulded to fit the average hand. Includes a three conductor line cord with ground wire and plug for use on 115 volts AC-DC. Overall length is 7 1/2". Fully adaptable for special attachments to make almost any job in your workshop done easier, quicker, and better.



18G15799 — Shpg. Wt. 3 lbs. . . . **38.00**

**LOW-COST DRILL ACCESSORIES**

**5-TO-1 GEARED CHUCK**

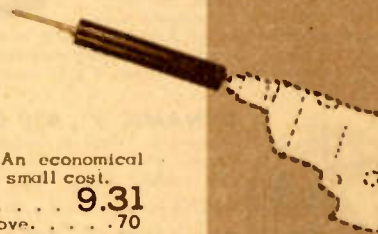
Made expressly for small electric drills. Geared to the ratio of 5 to 1 for drill sizes up to and including one half inch. Well made of strong and durable materials.



18G14698 — Shpg. Wt. 4 lbs. . . . **8.25**

**CONVERT YOUR DRILL TO A POWER-HAMMER**

A highly efficient adaptor tool which converts an electric drill into a powerful hammer. Excellent for drilling into cement, stone, brick, tile, etc. Powerfully built for speed and efficiency and ease of operation. Size 6-7/16 x 1-1/8". Self-contained lubrication. An economical adaptor tool well worth the small cost.



18G15472 . . . . . **9.31**  
 18G15473 — 1/4" bit for above. . . . . **70**  
 18G15474 — 3/8" bit for above. . . . . **95**  
 18G15475 — 1/2" bit for above. . . . . **1.55**

**IT'S EASY TO ANCHOR BOLTS, SCREW-EYES, ETC. WITH THESE HANDY, SUPER-FIBER PLUGS**

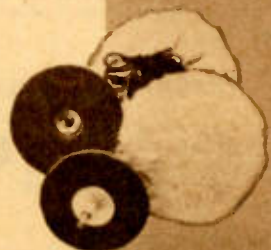
Safe, economical and reliable to use! Can be snipped without damage to the plug.

18G15476 — 1" for 1/4" hole. 100 for **1.65**  
 18G15477 — 1" for 3/8" hole. 50 for **1.60**  
 18G15478 — 1 1/2" for 1/2" hole. 25 for **4.00**



**POLISH OR SAND WITH THIS HANDY KIT**

Converts your electric drill into a power polisher and sander, giving professional performances. Kit includes flexible 1/4" adapter, silicon carbide sanding disc, Lambswool polishing bonnet, and pattern for cutting additional sanding disc.



18G15755 . . . . . **1.45**  
 18G15756 — 6 Fine grit discs. **38**  
 18G15757 — 6 Med. grit discs. **38**  
 18G15758 — 6 Crs. grit discs. **38**





**SERVICEMEN'S SPECIALS! QUANTITIES LIMITED!**

**Check These Costs Against What You've Been Paying**

**SPEAKERS AT SAVINGS!  
While They Last!**



**HI-FI 8" PM 21OZ. MAGNET**  
High quality PM speaker at a money-saving low price. Excellent replacement unit for hi-fidelity radios and P A systems. 21 oz. magnet. Capable of handling 10-12 w. Coil impedance 8 ohms.

99G7018 Shpg. Wt. 4 lbs. . . . . **3.95**

**ALNICO 5" AND 6" PM**

New Alnico V magnet provides maximum performance with minimum weight. Ideal as replacements in radios, record players and auto radios. Voice coil terminals on transformer bracket. 3.2 ohm V.C. imp. Less trans.



X144G - 6" PM. . . . . **1.59**  
99G7009 - 5" PM. . . . . **1.39**

**5" DYNAMIC**



For replacement in radio receivers, intercommunication and paging systems. 225 ohm 5" dynamic heavy pot, hum bucking coil and double shielded transformer to match output impedance of 50L6. Excellent for voice and music.

99G7013. . . . . **1.65**

**5" PM WITH XFORMER**

Ideal for replacement in radio receivers and intercom systems. High quality high permeability magnet. Formed one-piece seamless cone. Dustproof spider and voice coil construction for continued quality reproduction. Normal output capacity 2 watts. Voice coil impedance 3.2 ohms. Output transformer matches 50L6 or 50B5. Shpg. Wt. 3 lbs. Alnico V 1.47 mag.



99G7016. . . . . **1.59**

**DYNAMIC 5", 450 OHM**

Response 100 to 4500 cps. Rated 3 1/2 watts. Field coil 450 ohms. Shpg. Wt. 3 lbs. X187G. . . . . **1.39**



**DYNAMIC 5", 3000 OHM**

Flat response 100 to 4500 cps. 1-piece cone, 3000 ohm field. Less output trans. Wt. 3 lbs. X148G. . . . . **1.19**

**DYNAMIC 3", 450 OHM**

Has 450 ohm field coil. Flat response, when properly baffled, from 100 to 4500 cps. Formed one-piece cone. Less output transformer. Save money on the new low price for this quality-built dynamic speaker. Another example of the money-saving features when you buy your equipment from Lafayette-Concord.



X146G. . . . . **1.19**

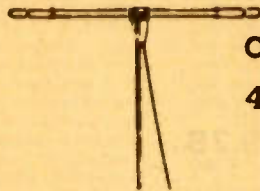
**THROAT MIKE ONLY .19**

Will work into any 200 ohm impedance input circuit. Adjustable strap to fit any neck size. Complete with strap, 10" cord, plug.



99G7060 Shpg. Wt. 1 lb. . . . . **.19**  
G14962 Jack for above. . . . . **.44**

**Now! Stromberg Carlson  
FM Antenna, Priced Down**



Only  
**4.75**

Covers all FM bands. Easy to handle, quick, easy assembly. Heavy mounting bracket with swivel base permits antenna to be turned for best reception from any direction. Slide-in trombone-type arms are calibrated and marked in megacycles to permit matching of your most-used frequencies. Arms and most constructed of light, seamless, heat-treated aluminum tubing. With mounting hardware and 60 ft. of 300 ohm twin lead-in wire. List price \$12.00.

99G9578 - Shpg. Wt. 4 lbs. . . . . **4.75**  
Each, in lots of 3. . . . . **4.25**

**PHOSPHOR BRONZE CABLE**



16 tight braided strands. 100' spool of excellently durable cable. Can be used for almost all sets. Take advantage of this low price and stock up now.  
99G5148 - 100' . . . **1.49**

**SELENIUM RECTIFIER**

100 Mill. selenium rect. It saves space. Only 1 1/4 x 1/16". Fits into hard-to-get-at places where tubes won't fit. Two of these rectifiers may be connected as a voltage doubler to supply 250 V at 80 ma from 117 V. AC power supply.



99G10560 . . . . . **.75**  
Special price for 10. . . . . **6.80**

**HIGH-GRADE MAGNET WIRE**

A special low price has been set on this high quality magnet wire. Double silk covered. Popular with amateurs and experimenters.



99G5149 No. 20. 42 ft. spool. . . **.15**  
99G5150 No. 28. 119 ft. spool. . . **.15**

**"Best Buy" All-Purpose**

**Crystal Mike,**

Now Only

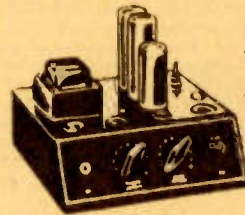
**5.75**



An inexpensive, all-purpose crystal microphone, especially suited for amateurs, portable sound systems, and home recording. Output is approximately -52 db. Mounted on combination hand and desk stand. Base may be removed for hand use. High impedance. Built by reputable manufacturer. Complete with 7 ft. of cable.

99G7076 Shpg. Wt. 4 lbs. . . **5.75**

**HIGH GAIN AUDIO PREAMP SALE!**



• 4-STAGE PREAMP  
• USES 5 TUBES  
**WHILE THEY LAST**  
**ONLY 8.95**

This preamplifier can be used on a number of different installations and is an excellent item for the service shop. Comprises a 4 stage amplifier, using 6SJ7-1st stage, 2-6SN7 as 2nd and 3rd stage and a 6J5 as 4th stage-5Y3GT rectifier. Has a 65 mill. power transformer, 2 heavy duty chokes and 35 mfd. of condenser. Input suitable for high impedance microphones and high impedance low output pick-ups. Has single circuit mike jack, volume control, tone control and replaceable fuse on front panel. Overall size: 7 1/2" high, 9" wide, 9" deep. For 110 v. 60 cyc. Shpg. Wt. 10 lbs.  
99G9604-Preamplifier, less tubes. . . . . **8.95**

**SPECIAL VALUE XTAL CARTRIDGES**

**Save 50% Now! Limited Quantity!**



Stock No.	Model No.	Voltage	Price
99G3592	L70	1.0	1.89
99G3593	L71	1.0	1.79
99G3594	L26	1.4	1.89
99G3595	L40	.6	1.89
99G3597	QT3M	.75	2.98

**67 1/2 VOLT "B" BATTERY**

Here's big value: a 67 1/2 volt "B" battery. Excellent results, especially when used in personal portable radios. Replaces the Burgess XX45, etc. Size: 1-3/8x2-11/16x3-11/16". Fully guaranteed backed by Lafayette-Concord.



99G6599 . . . . . **1.39**

**PUNCHED CHASSIS AND DIAL BRACKET**



Well constructed of durable materials. Sturdy. A. Chassis 1 1/2x5 1/4x2". Dtal 7 1/2x2". Bkt. 10 1/2x7 1/2".  
99G9606. . . . . **.29**  
B. Chassis 8 1/2x4x1 1/2". Dial 4 1/2x5".  
99G9605. . . . . **.19**

**LOW-COST JACK BOX, ONLY .25**

Another of the outstanding values offered to you by Lafayette-Concord. Consists of one three-circuit jack, one 150M potentiometer and five position rotar switch enclosed in aluminum case. Size: 4 1/2" long, 3" wide, 3" high. Complete with knobs.



99G3959 - Shpg. Wt. 2 lb. . . . . 10 For 2.25 . **.25**



LIKE TO SAVE MONEY BY BUILDING YOUR OWN?

LC Kits for Radio, Phono, or Test Equipment are "Best Buys"

AMAZING MICROPHONE

TALK THRU YOUR OWN  
RADIO'S SPEAKER!  
NO WIRES AT ALL!  
BATTERY-POWERED  
LOADS OF FUN  
FOR ONLY

4.64



New streamlined microphone allows you to talk through your radio from any room in your house — without the use of connecting wires! Effective range of 75' and tunes 1000 to 1700 KC.

This lightweight unit is entirely self-contained, with power supplied by one flashlight cell and a "Minimax" "B" battery. The power drain is extremely small, due to the use of only one tube, a 1L4 type. Rubber rim on base protects furniture against scratching.

6 1/2" high, 5 1/2" deep, 5" base. Complete with batteries and tube, all ready for immediate use and hours of real fun and entertainment. Wt. 3 lbs.

G22620. . . . . 4.64  
Mike with sound effects kit listed below.  
G22621. . . . . 6.61

Sound Effects Kit includes 15 items to produce sound effects. Also includes 3 scripts (western, detective, and historical) keyed to these sound effects.

G22622. . . . . 2.63

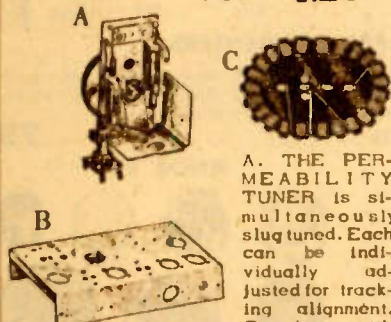
ALL-AMERICAN TUBE KIT

Popular replacement kit of five standard brand tubes. Includes one each of 50L6, 35Z5, 12SQ7, 12SA7, and 12SK7 tubes. A real bargain in replacement tube. Wt. 3 lbs. List Price 6.95



99G9549 . . . . . 2.96

BUILD A PERMA TUNER  
FOR 1.29



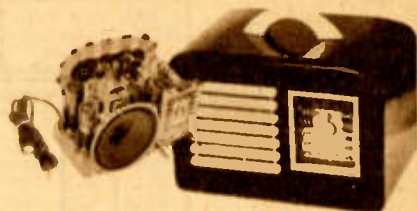
A. THE PERMEABILITY TUNER is simultaneously slug tuned. Each can be individually adjusted for tracking alignment. Complete with antenna coil,

oscillator coil, oscillator padder coil, and diagrams for 5-6" tube superhet receivers. 4x2 1/2x2 1/4". Dial drum 2 1/2".  
99G3574 Shpg. Wt. 9 lbs. . . . . 1.29  
B. THE CHASSIS. Aluminum chassis punched and drilled. Size 5x10x2".  
99G9579 Shpg. Wt. 1 lb. . . . . 29 C. LOOP ANTENNA. Matches input impedance of permeability tuner above. Finest copper wire on fibre board.  
99G3575. . . . . 19

LOTS OF FUN — LOTS OF SAVING — YEARS OF USE

THIS 5-TUBE AC-DC KIT SOLD AT \$13.75, NOW ONLY 11.95

Long a star-seller in the Lafayette-Concord kit line, this outstanding 5 tube AC-DC kit has been improved by being put in a new and modern two-toned plastic case. Despite the improvement, the enormous sales volume permits our reducing the price to an unbelievable \$11.95! Still the same fine features: five-tube Superheterodyne using 12SA7, 12SK7, 12SQ7, 50L6, and 35Z5 tubes. Automatic volume control. Streamlined airplane dial covering 550 to 1600KC, built-in loop antenna and a new Alnico V speaker. A real beautiful workmanlike job equal to a \$25 set when assembled. Complete with cabinet and tubes. Thousands bought this AC-DC kit before the luxury plastic case was added and the price

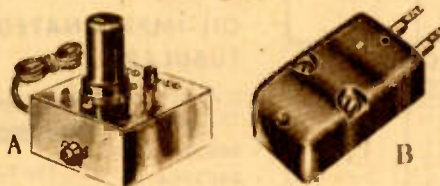


then was \$13.75. But now, this improved kit can be offered to millions of customers at the low, low price of \$11.95. Shpg. Wt. 9 lbs.

32G24548 . . . . . 11.95

A 12.00 HI-FI CARTRIDGE NOW 3.85  
MATCHING HI-FI PREAMP AT 4.85

MAKE A TERRIFIC LAFAYETTE  
"BEST BUY"



Now, the famous HI-FI variable reluctance cartridge is yours, at a fraction of the usual cost. A — The PREAMP permits the use of the cartridge in any phono or radio that has a crystal pickup. High impedance output connects to any phono input. 2 position switch for high or average frequency response. With tube.  
B — The CARTRIDGE gives HI-FI response, 50-10,000 cps. 80 millivolt output force of 15-30 grams. Retractable sapphire stylus with replaceable, felt, record cleaning pad.

34G13478 Cartridge. Wt. 2 oz. . . . . 3.85  
34G13479 Preamp. Wt. 2 lbs. . . . . 4.85

LP AND STANDARD PICKUPS  
AT LC "BEST BUY" PRICES



A Long Playing pickup for the new 33-1/3 RPM, long-playing records. Excellent frequency response. Approximately 1 volt output. Low tracking force.

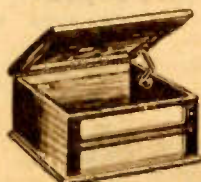
99G3577 Shpg. Wt. 12 oz. . . . . 2.69



Standard crystal phono pickup for playing the regular 78 RPM records. High voltage output.

99G8002 . . . . . 1.89

RECORD PLAYER CABINET,



Install your own record player or changer. Large enough to house record player with a base 12x12". Will also accommodate a 3 or 4 tube amplifier and a 4" or 5" oval speaker. Constructed of mahogany veneers and fine, selected hardwoods.

99G7072 Shpg. Wt. 10 lbs. . . . . 4.95

BUILD YOUR VTVM TESTER,  
ONLY 23.95

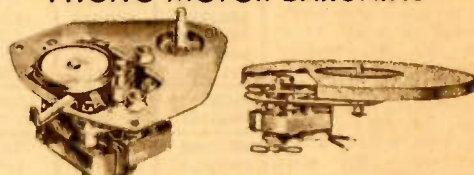
SERVICEMEN!  
EXPERIMENTERS!  
SAVE \$30 — BUILD  
YOUR OWN VTVM  
TESTER



This sturdy VTVM Tester Kit is offered to servicemen, amateurs, and experimenters so they might build their own VTVM voltmeter at a great money saving. This tester kit contains a newly designed and improved circuit. Quality precision parts that are used throughout insures utmost accuracy on all scales. DC input impedance of 11 megohms. AC input impedance of 6.5 megohms. Ranges: Resistance .1 ohms to 1000 megohms in five ranges; DC volts on linear scale 0-3/30/100/300/1000 v; Output scale calibrated for 600 ohm circuit. Large easy-to-read 4 1/2" 0-500 microamp DC meter. Complete with 6SN7, 6H6 tubes and test prods. Size: 6x9x5". Shpg. Wt. 8 lbs.

32G24540 . . . . . 23.95

PHONO MOTOR BARGAINS



DUAL SPEED SINGLE SPEED

Compact, low-cost dual speed rim-drive units with external lever type speed change control. Same size as present single speed motors. 78 and 33-1/3 RPM two-pole motor with 9" turntable and mtg. plate. For 110 v, 60 cyc. AC.

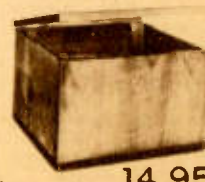
99G7085 Shpg. Wt. 4 lbs. . . . . 5.39

The price is way down on this rim-driven phono motor, complete with turntable. Constant single speed (78 RPM). Self starting. Forced draft air-cooling. 110 v.; 60 cycles, A. C.

99G8003. Shpg. Wt. 6 lbs. . . . . 3.25

RECORD CHANGER CABINET

This handsome record cabinet makes a handsome addition to any room in beautiful straight-grained walnut veneers. Panel will fit Webster 256 and 156 Twin hinge top. Stain-smooth finish.



22G19425 — Shpg. Wt. 12 lbs. . . . . 14.95  
22G19426 — As above with blank panel. . . 14.95





LC'S BETTER-THAN-BEST CONDENSER BUYS!

You'll Recognize the Brand Name—and the Quality  
BUT THE PRICES ARE DOWN AS MUCH AS 60%!



Here's a chance to stock up on some staple condensers of standard brand at an amazingly low price. You'll want to keep a supply on hand. Order them now and have them ready at the instant that you need them!

8 Mfd. 150 WVDC X107 10 for 2.90 32¢ Each					16Mfd. 150WVDC X109 10 for 3.30 36¢ Each					10Mfd. 450WVDC X123 10 for 3.80 42¢ Each					12Mfd. 450WVDC X124 10 for 4.20 46¢ Each					16Mfd. 450WVDC X125 10 for 4.90 54¢ Each					5-5 Mfd. 50 WVDC X128 10 for 4.00 44¢ Each																																																																					
No.	Mfd.	WVDC	Ea.	Ea. lots/10	No.	Mfd.	WVDC	Ea.	Ea. lots/10	No.	Mfd.	WVDC	Ea.	Ea. lots/10	No.	Mfd.	WVDC	Ea.	Ea. lots/10	No.	Mfd.	WVDC	Ea.	Ea. lots/10																																																																						
X101	25	25	34¢	31¢	X115	16	250	44¢	40¢	X130	8-8	150	46¢	42¢	X103	10	50	32¢	29¢	X117	8	350	36¢	33¢	X131	8-16	150	48¢	44¢	X108	12	150	34¢	31¢	X119	16	350	50¢	45¢	X134	8-16	200	52¢	47¢	X110	20	150	38¢	34¢	X126	20	450	60¢	54¢	X135	12-12	200	52¢	47¢	X112	40	150	44¢	40¢	X127	16	500	80¢	72¢	X138	8-8	450	68¢	61¢	X114	12	250	40¢	36¢	X129	10-10	50	46¢	42¢										

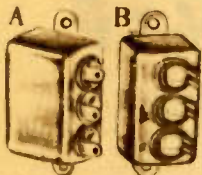
**SPECIAL VALUE CONDENSERS**



A great opportunity to save money on condensers. Midgets have bare wire leads. Can types hermetically sealed, spade mounting lugs. Polarity indicated.

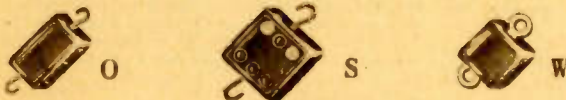
Stk. No.	Mfd.	Volts	Each	10 For
99G3156	10	450	23¢	2.05
99G3223	20	150	21¢	1.90
99G3225	40	150	28¢	2.50
99G3224	20-20	150	29¢	2.70
99G3300	30-20	150	38¢	3.50
99G3301	40-20	150	40¢	3.60
99G3302	40-40	150	44¢	3.90
99G3226	50-30	150	39¢	3.50

**OIL-FILLED BATHTUB CONDENSERS**



Stock No	Illust.	Mfd.	WVDC	Each	10 For
99G3217	A	.25	600	.17	1.35
99G3248	A	.5	600	.19	1.50
99G3248	A	1.0	600	.25	2.25
99G3251	B	1x.1	600	.19	1.50
99G3260	A	1x.1x.1	400	.09	.75
99G3259	A	.5x.5	100	.09	.75
99G3250	B	.25	25	.19	1.50

**BUYS IN MIDGET MICA CONDENSERS**



**SILVER MICA**

These quality silver mica condensers are at a price you can't afford to miss! They are all individually tested for accuracy of capacity, voltage breakdown, and leakage. All those rated at 500 v DC working are 1000 volt test, those rated at 300 volts DC working are 600 volt test. Restock your needs with an order today.

Stk. No.	Mfd.	WVDC	Type	Price
99G3270	.000075	500	0	Each
99G3267	.00005	300	0	
99G3265	.000025	300	0	.6
99G3272	.0001	300	0	
98G3448	.000125	500	0	
99G3230	.00015	500	0	10 for 54¢
98G3502	.00033	500	0	Each 8¢
98G3531	.00082	500	0	10 for 72¢
98G3386	.001	300	0	Each
99G3231	.0011	500	S	.15
99G3232	.0019	500	S	
99G3268	.0022	300	S	10 for 1.35
99G3233	.0038	500	S	Each 24¢
99G3234	.004	500	S	10 for 2.15
99G3271	.0049	300	S	

**MOLDED BAKELITE MICA**

Molded bakelite mica condensers in a range of capacities that will fill the needs of servicemen, hams, and experimenters. All are individually tested for accuracy of capacity, voltage breakdown, and leakage. All those rated at 500 volts DC working are 1000 volt test, those rated at 300 volts DC working are 600 volts test. They are stable and dependable to use.


Stk. No.	Mfd.	WVDC	Type	Price
98G3397	.0000047	500	0	
98G3485	.000025	500	0	Each
98G3430	.000027	500	0	.04
99G3572	.000035	500	0	10 for 35¢
98G3488	.00005	500	0	
98G3489	.000075	500	0	
98G3375	.000125	300	0	
98G3479	.00015	500	S	
98G3491	.00015	500	0	
98G3573	.000175	500	0	
98G3494	.0003	500	0	Each 5¢
98G3496	.0005	500	0	10 for 45¢
98G3456	.0005	500	W	
99G3254	.001	500	0	Each 6¢
98G3463	.0015	500	S	10 for 50¢
98G3385	.0068	300	S	
99G3253	.01	300	S	Each 9¢
				10 for 80¢

**BARGAINS IN PAPER TUBULARS**


Top quality in paper by-pass condensers at new, unbelievably low prices. Sizes are those most used by servicemen and experimenters.

Stk. No.	Mfd.	Volts	Each	10 For
98G3804	.001	400	4¢	.35
99G3284	.001	600	6¢	.54
99G3297	.01	400	4¢	.35
99G3298	.03	400	4¢	.35
99G3285	.25	600	9¢	.81
99G3286	1.0	400	18¢	1.62


**OIL-IMPREGNATED TUBULARS**

Compact, non-inductive   
98G3252-.01 1500  
98G3254-.05 1000 19¢ EA.  
98G3257-.1 1000 10 for 1.50


**OIL-FILLED PAPER CONDENSERS**

Cap. .05 mfd, 600 DCWV. 13/16x1 1/4"   
99G3213-With Bracket. . . . .09  
99G3214-Without Bracket. . . . .09  
10 for. . . . .80

**TOP-PERFORMING DRY ELECTROLYTICS**

 High-quality electrolytic, 8 mfd., 450 V DC. Insulated metal can, flexible leads. Anti-humidity. Mounts in 7/8" hole.  
98G809: Each lots of 10 .45 Each singly 49¢

**CERAMIC CONDENSERS, ONLY 3¢ EACH**

 Extremely compact and stable. Flash-tested 1400 V, 500 DCWV. Leakage resistance 10M meg. .  
98G3558-20 mfd. - 20%. Size: .45"x.21" EA.  
98G3559-50 mfd. - 20%. Size: .45"x.21" 3¢  
98G3561-120 mfd. - 24%. .835"x.225" (10 for 25¢)


**KIT OF 25 MICA CONDENSERS**

Handy kit of the most popular size bakelite mica capacitors for servicemen and amateurs. Unmarked, but all guaranteed perfect. High-quality units at a low price!



99G277. . . . .49¢

**KIT OF 10 MOLDED PAPER CONDENSERS**

 Molded bakelite cased, wax-impregnated paper condensers, .006 to .2 mfd. 200 to 600 volts. Axial wire leads, RMS color code.  
99G6976 . . . . .79

**VOLTAGE DIVIDER KIT**


 Kit contains 10 wire-wound resistors in bakelite cases. A metal mounting strap conducts heat from unit without shorting. This kit will come in handy any time you need voltage dividers.

**KNOB KIT**



20 assorted popular knobs.  
99G265. . . . .69 99G6984 . . . . .39

**HANDY TERMINAL STRIP KIT**

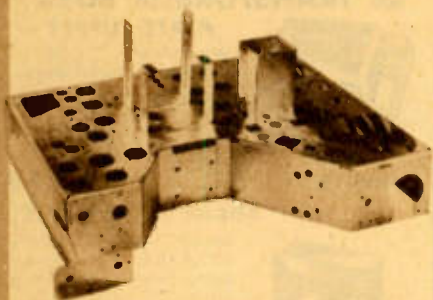
 Kit of 10 assorted terminal strips with from 2 to 28 terminals. Phenolic insulation with either screw or solder lug terminals. Mounting holes or brackets on each strip.  
94G6975- Kit of 10. . . . .29



**BIGGER AND BETTER SERVICEMEN'S BARGAINS?**

**Lafayette Cuts the Cost 'Way Down for these "Best Buys"**

**STAMPED CHASSIS FOR 630TS TV KIT PLUS ALL METAL PARTS, ONLY 29.50**



This fine chassis is available with four metal mounting parts for those builders who do not want the complete mounting kit. In addition to the punched and formed 630TS chassis of plated steel, these metal parts are included: "U" bracket for mounting focus coil, yoke mounting bracket, control bracket, and cathode trap shield. No drilling or fitting needed.

31G24563 . . . . . **7.50**

This heavy-duty, plated-steel chassis is supplied with all other metal parts needed by the television builder. It's completely punched and formed, ready for constructing the popular RCA 630TS television receiver. RCA components fit without drilling or further fitting. All metal mtg. parts are included, such as shields, covers and brackets.

31G24654 . . . . . **29.50**

**AM SIGNAL GENERATOR**

Extremely stable companion unit to TV Gen. on back page. Covers long wave, broadcast and short wave. RF from 100 kc. to 25 mc. in six bands of harmonics. Internal modulation of 400 c.p.s. variable from 0 to 100%. Highly stable RF and AF oscillators. Welded steel gray enameled cabinet. For 110 volt, 60 cycle AC only. 8x10x12". With output cables and tubes.

25G21738 - Shpg. Wt. 19 lbs. . . **34.95**

SEE the FM Signal Generator on Back Cover!



**GUIDES TO SUCCESSFUL SERVICING**

**SAMS \$500 PHOTOFACIT COURSE IN BOOK FORM**



Howard W. Sams' \$500 Photofact television course is now bound in book form to meet the demands of radio men. It was formerly available only in Photofact folder sets. Written in easy-to-read language, profusely illustrated, and packed with valuable last-minute data. This book gives a complete understanding of television in an easy, economical way. Over 200 pages, sturdy binding, 8 1/2 x 11".

23G20204 - Each, postpaid. . . . . **3.00**

**FM CONVERTER, CHANGES 40-50 MC - 88-108 MC**

Change old 40-50 Mc. FM radios to the new 88-108 Mc. FM band at a new low price! This fine converter is easily installed. Full instructions.

30G10055 - Wt. lbs **5.88**



**4-TUBE AMPLIFIER! 6-INCH SPEAKER! COMPLETE WITH TUBES ONLY 8.65**

4-tube amplifier, high-impedance input for crystal pickup beam power output, tone and volume controls. 6" speaker with output transformer. 2-35Z5, 35L6 and 12SQ7 tubes included.

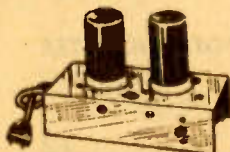
99G9600 - Wt. lbs. . . . **8.65**



**2-TUBE PHONO OSCILLATOR - NO WIRES NEEDED**

Play music from your record player through your radio without connecting wires. Recorded music is sent by radio waves to radio. Aluminum chassis, 2 EF-50 tubes.

99G8006 - Wt. 2 lbs. **4.75**



**NEW RIDER TV-HOW IT WORKS**

Gold-mine of information on the operation of modern television receivers. Here is the tie-up between theory and practice that you have been wanting. Begins with transmission and reception of television signals. Next it takes up frequency standards and antennas. Various portions of a TV receiver are then described: RF oscillator, video amplifier, tubes, etc. Over 200 pages.

23G19920 - Rider's Television "How It Works," postpaid. . **2.65**

**RIDER TV MANUALS-VOLS. 1 and 2**

All the information you need to service, television receivers and kits made by 67 manufacturers during 1948. Equivalent of 2300 pages. Receivers, boosters, tuners, tests, waveforms, voltages, adjustments, etc. Index for Vols. 1 & 2.

23G19923 - Vol. 2, Postpaid. **17.64**

Volume 1. Covers 1946 and 1947. 1400 pages. With "How It Works" described above.

23G19922 - Vol. 1, Postpaid. . . . . **17.64**



**RCA TV SERVICE DATA BOOK**

Advanced study guide for television servicing! Authoritative coverage with easy-to-follow alignment procedures; circuit, installation and service information. Diagrams, photographs, and replacement parts lists. Drawings of RCA 630TS and 648PTK.

23G19904 - Approximately 100 pages. Each. . . . . **1.50**

**TV SERVICING-THE VIDEO HANDBOOK**

14 sections, plus 800 illustrations make up this complete television manual for home study. How television works; designing, building, servicing; programing and producing shows; charts, formulas, rules, and terms; and other phases.

23G19961 - 768 pages. Postpaid. . . . . **4.90**



**THE RADIO DATA BOOK, ONLY \$4.90**

The radioman's bible! Over 1000 pages of data and information on electronics, including a complete tube manual. Twelve sections cover the basic radio circuits, test equipment, antennas, sound systems, etc. Easy to read, with charts, schematics and photographs.

23G19960 - 1148 pages. Postpaid. . . . . **4.90**



**SPECIAL! Both Video Hand Book and Radio Data Book for 9.00**

**GENUINE GE VOLUME CONTROLS!**



**INDIVIDUALLY BOXED!  
SPST SWITCH AVAILABLE  
YOUR COST, ANY TYPE, .29**

Stack. No.	Ohms	Taper	
99G2130	25,000	Linear taper, voltage divider.	L fat
99G2131	50,000	Audio or antenna shunt circuit.	\$1.25
99G2132	100,000	Audio or antenna shunt circuit.	EACH
99G2133	250,000	Audio or antenna shunt circuit.	
99G2134	500,000	Linear taper, voltage divider.	29¢
99G2135	500,000	Audio or antenna shunt circuit.	
99G2136	1.0 Meg.	Audio or antenna shunt circuit.	
99G2137	1.0 Meg.	Aud. or ant.; Tapped 250,000 ohms.	
99G2138	2.0 Meg.	Audio or antenna shunt circuit.	

Single-pole, single-throw switch for any above volume control.

99G2139 - Each. . . . . **9¢**

**LAFAYETTE WILL NOT BE UNDER-SOLD!**

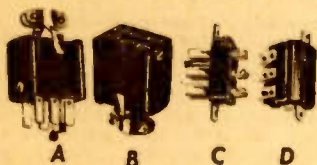


LOOKING FOR SOME SPECIAL BARGAINS?

# Connectors, Chokes, Volume Controls, Transformers—All "Best Buys"

## POPULAR JONES CONNECTORS

Jones Connectors at low prices! Heavy duty units rated at 10 a., 110 v. Heavy duty type C and D have brackets at ends, standard type at sides.



A. Type A Plug  
B. Type B Socket  
C. Chassis-type Plug  
D. Chassis-type Socket

Contacts	Stock No.	Type	Each
4	99G290	C	.13
6	99G292	A	.25
8	13G12403	A	.85
8	13G12429	C	.56
10	•13G12464	A	.50
10	13G12404	A	.96

Contacts	Stock No.	Type	Each
4	13G12413	B	72¢
6	99G293	D	20¢
8	99G294	D	23¢
8	99G295	B	35¢
8	99G296	E	15¢
10	•99G297	D	12¢
10	99G298	E	20¢

\*Standard-type: 5 amperes, 45 volt.  
†Same as Type D, less angle bracket.

## "BEST BUY" CHOKE SPECIALS

### 4 HENRY, 500 Ma

Heavy duty, 500 ma. 12 ohms DC resistance. Wax coated against moisture. Size: 3-1/8x3 1/4x4". Mounting centers: 1 1/2x3".

99G6594. . . . . 2.45

### 8 HENRY, 50 Ma

8 Henry, 50 ma. choke. Unshielded, strap-type mtg.

99G6584. . . . . 19

### 30 HENRY, 50 Ma

30 Henry, 50 ma. choke, 450 ohms resist. Unshielded, strap mtg. 2 1/2x 1 1/2x2-1/8".

98G246—Wt. 2 lbs. . . . . 73

### 10 HENRY, 70 Ma

10 henries, 70 millamps, 400 ohms DC resistance. Mtg. centers 2-13/16".

99G6598. . . . . 73

### 4 HENRY, 150 Ma

4 henries, 150 ma. 100 ohms DC resistors.

99G6589. . . . . 69

### 15 HENRY, 50 Ma

120 ohms DC resistance. Shielded, strap mtg. 1-5/8x2x1 1/4".

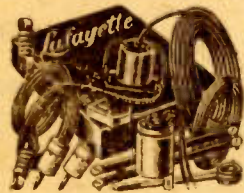
99G6550. . . . . 69

### 7 HENRY, 40 Ma

7 henries, 40 ma. 400 ohms DC resistance. centers 2".

99G6588. . . . . 39  
In lots of 10. . . . . 35¢

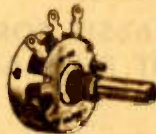
## DOUBLET ALL-WAVE ANTENNA KIT



Will operate with all broadcast and short-wave receivers. Completely factory-assembled, ready for installation. Two 30 ft. coils of No. 7/24 bare copper aerial wire; 50 ft. of No. 22 braided transmission line cable; two 3" glass insulators; 1 duplex lead-in strip; 1 "C"-type ground clamp; 10 ft. of No. 20 ground wire; 1 antenna transformer in porcelain case; 1 receiver coupler; 1-6" insulator, 2 nail knobs; complete instructions.

99G9597. . . . . 2.49

## RELIANCE VOLUME CONTROLS



Full-length shaft, standard 3/8" bushing. Switches are affixed, SPST. Taper Type 1: linear for voltage divider circuits. Type 2 for audio or antenna shunt circuits.

Less Switch	With Switch	Res. Ohms.	Taper Type
8G8112	8G8123	25,000	1
8G8115	8G8119	50,000	1
8G8114	8G8129	100,000	1
8G8116	8G8120	250,000	1
8G8117	8G8121	500,000	1
8G8113	8G8126	500,000Ω	2
8G8118	8G8122	1 megohm	1
8G8105	8G8127	1 megohm	2
8G8111	8G8133	2 megohm	2

## RELIANCE VOLUME CONTROL TAPERS

1—Linear, for volume — divider circuits.  
2—For audio or antenna shunt circuits. 34  
Less Switch—Each. . . . . 44¢  
With Switch—Each. . . . . 44¢

## SPECIAL VALUE CONTROLS



99G2114 — 500 ohms EACH 8¢  
99G2116 — 75,000 ohms 10 FOR 72¢  
99G2117 — 100,000 ohms  
99G2118 — 200,000 ohms  
99G2119 — Dual 600 ohms



ONE MEG. VOL. CONT.  
1-1/8" dia., 1/2" deep. 1 megohm, less switch. 1/2" shaft 1 1/2" long. Potentiometer taper. Requires 1/2" behind panel.  
99G2041— 10 for 1.49. 17



## CARBON CONTROLS

A real buy in volume controls! All have standard 3/8"-32 threaded mounting bushing, and solder lug terminals. Screwdriver slot shafts. Get a set of them and have them on hand when you need them!

98G8082 -10,000 ohms. 1" diam., 1/2" deep. Shaft 1/2" diam., 1/2" long. 10 FOR 49¢

## 25 WATT POTENTIOMETER



20 ohms resist. Single hole mounted by 3/8"-32 threaded bushing. Body: 1-5/8" dia., 1" dp. 1/8" long shaft. 13  
98G8167 Ea. lots/10. . . . . 15¢  
Each, Singly. . . . . 15¢

## POTENTIOMETER WITH SWITCH



160 ohm, 4 watt, insul. rotor and switch. Straight taper. 3/8" thr. bush. 1/2" shaft, 5/8" bush. Snap-on switch. 12  
98G8142—Each, lots/10. . . . . 12  
Each singly. . . . . 15¢

## CARBON POTENTIOMETER



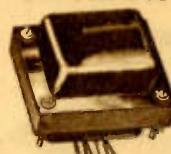
Fully-enclosed, carbon type. 3/8"-32 threaded bushing. 13,000 ohms. 1-1/8" dia. x 1/2". Shaft 1/2" dia. x 1/2". 8  
98G8158—Ea., lots/10  
Each, Singly. . . . . 10¢



## DUAL POTENTIOMETER

Smooth enclosed carbon type. Front section 2 megohms; rear 40,000 ohms. 3/8"-32 threaded bushing. 24  
98G8137—Each, lots of 10. . . . . 24  
Each, Singly. . . . . 29

## LC TRANSFORMER BUYS



Heavy-duty plate supply transformer. Pri.: 117 v. 60 c. AC. Sec.: 800 VCT, 200 ma. Color-coded leads. 4 1/2x3-3/4x 3-7/8".

99G5116 . . . . . 3.49

## OUTPUT TRANS. 38 to V.C.



Single 1DS, 1LB4, 1J5, 1T5, 12A7, 38 to voice coil. Pri. 16,000 ohms 10 ma. DC max. Sec. 3.2 ohms, 2 w., Mtg. 2".

99G6951. . . . . 45

## 4 watt. 50L6 OUTPUT



Single-ended secondary, 4 ohms imped. For 50L6 output. Unshielded. Coded leads.

X176—2000 ohms .39  
X177—5000 ohms

## TUBE TO 200 OHM LINE



Tube to 200 ohm line. Primary imp. 2500 ohms. Secondary impedance 200 ohms. Colored lead wires.

99G5109— 10 FOR 1.35  
Each, Singly. . . . . 15

## TUBE TO 500 OHM LINE



Primary 15,000 ohms, 10 ma.; secondary 500 ohms. Enclosed, herm., sealed. For remote line and pre-amp. 2 1/2x1 1/2x1 1/2".

99G5125 . . . . . 49

## MIDGET INPUT XFORMER



6-8 ohms to single grid. Unshielded, with 4 color coded leads. For small PM speaker used as mike. 1-3/8x1-1/8x1/4".

98G5962—Each, in lots of 10. . . . . 08  
Each, Singly. . . . . 9¢

## PRICE-CUT IF XFORMER



High gain, permeability tuned. 375 kc. normal peak, satisfactory operation at 455 kc. peak. Screwdriver slot adjustments. 5 solder lug terminals. 1 1/2x1 1/2x2 1/4". 2 spade mtg. studs 6/32x3/8" on 1-3/8" mtg. centers.

99G5129— Each, lots of 10. . . . . 35  
Each, Singly. . . . . 39¢

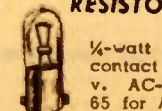
## DISCRIMINATOR TRANSFORMER



Discriminator transformers at a real saving! Air-tuned, 456 kc. for use in AFC systems, etc. Fixed phasing condenser may be removed and transformer used as CT output IF. 1-3/8x1-7/8x4 1/2". Wire leads.

98G10143—Two for 42¢. 5 FOR 95¢

## RESISTORLESS NEON LAMP



1/4-watt resistorless type. Two contact bayonet base. 105-125 v. AC-DC. Starting voltages: 65 for AC; 90 for DC. For test instruments.

X188—Each. . . . . 15



LOOKING FOR SOME ALWAYS-HANDY BARGAINS?

Lafayette Stretches the Servicemen's Dollar with these "Best Buys"

YOUR OWN GEIGER COUNTER! USE THIS PROSPECTOR'S MODEL TO LOCATE RADIO-ACTIVE MATERIAL! EARN A BOUNTY!



Have your own Geiger counter! Here is a counter which records radiation from radio-active materials like those used on the atomic bomb tests. This prospectors' model is designed to be used in locating new deposits of carnotite, pitchblende, curite, or other radio-active materials. Uranium can be found with this unit even when covered with thick overburden. This instrument is quite sensitive. It's calibrated to give three times as many clicks in the earphones with a sample of ore having a

content of .05% U308 as it will for a normal background. An ore containing this percentage of radio-active material will earn the government bonus of \$10,000.00. It is extremely easy to operate. Just plug in the earphones, and the instrument is automatically turned on. Weighs only 2 pounds complete with batteries, is only 3" x 4" x 5". Batteries will normally last a year. Geiger tube life is one hundred mill counts.

25G21634 - Geiger Counter, including earphones and batteries. **75.00**

**0-150 AC VOLTMETER**

Black bakelite. Has 2-3/4" panel opening, 3 1/2" flange. White scale, black lettering. Range: 0-150 v. AC.

99G4217. . . . . **4.75**

**DC MILLIAMETER**

1000 DC MA full-scale deflection. White scale, black lettering. 3-3/8" flange drilled for panel mounting.

99G4204 - Wt. 1 lb. . . . **1.95**

**25 WATT POWER RHEOSTAT**

Ceramic and glazed porcelain. 3/8" dia. bushing. 1/4" dia. x 1/2" shaft.

99G2122 - 20 ohm. . . . **.49**  
99G2121 - 5000 ohm. . . . **.69**

**25 WATT RHEOSTAT**

Wire wound power control. DC res. 3 ohms. 1-5/8" dia. by 1-1/8" deep. Shaft 1/4" dia. x 1".

98G6839 - 10 FOR **1.25**  
Each, Singly. . . . . **.15**

**LITZ-WOUND AC-DC COILS**

Hi-gain, unshielded. 175-550 meters. Hi-imped. pri; 4-bank Litz-wound sec. Tunes with .000365 mfd. cond.

98G10012 - Antenna Coil. **.35**  
98G10095 - R.F. Coil. . . . **.35**  
98G10096 - Set of 2. . . . **.67**

**5 PUSH-BUTTON SWITCH**

Each button DPDT, all common in normal position. Shafts extend 2 1/4".

98G12592 10 FOR **.49** . . **.6**

**DPDT SLIDE SWITCH**

Double pole, double throw slide switch with spring return. Spring may be easily removed if desired.

99G4230 10 FOR **.90** . . **.10**

**ATTACHMENT PLUG BASE**

Brown bakelite in the usual strong Rodale construction. "Female" type.

99G299 10 FOR **.54**  
Each, Singly. . . . . **.54**

**0-30 DC AMMETER**

A full scale deflection of 30 amperes. Panel opening is 2 1/4" in diameter. 3 1/4" flange. Shpg. Wt. 1 lb.

99G4218. . . . . **3.95**

**0-20 DC MA METER**

2 1/4" flange mtg. type. Black bakelite case. Hardware included.

99G4122-Wt. 1 lb. . . . **2.39**

**DUAL CONTROL RHEOSTAT**

Heavy ceramic and metal. Fully insulated. 1375 ohms each section. 25 watts. 1 1/2"x1-3/8". 3/8" shaft.

98G8168-Each. . . . . **.39**  
Lots/10, Each. . . . . **.35**

**RHEOSTAT**

B-50 resist. wire wound around core, embedded in enamel. Copper graphite brush moves inside winding. 2.22 amps., 10 ohms. 3/8"x1/2".

99G2120-10 FOR 1.30 Ea. . . **15**

**EXTRACTOR FUSE POSTS**

Bakelite fuse holder for 3AG fuse. Panel mounting. 15/16 bush. rubber washer.

99G238. . . . . **.14**

**ACORN TUBE SOCKET**

A socket which is exceptionally low-loss. It is equipped with rugged spring contacts for 954 and 955 tubes. Ceramic material.

99G6980 10 FOR **.45** . . **.5**

**OCTAL SOCKET**

Flush mtg. phenolic compound socket in steel saddle. With 4 grounding lugs, silver-plated contacts

99G6980 10 FOR **.43**  
5 FOR **.25**

**DOLLAR SAVING TUBE SALE!!**



Some are boxed, some are bulk, but they are all name brands, fully guaranteed tubes such as GE, RCA, Sylvania, etc. Quantities limited.

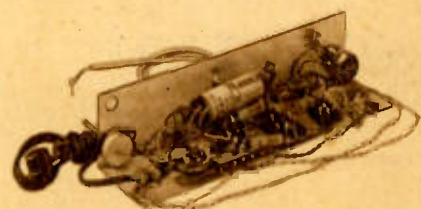
TYPE	EACH
OZ4. . . . .	.67
1H5GT. . . . .	.67
1LH4. . . . .	.75
1N5GT. . . . .	.82
1S5. . . . .	.59
3Q4. . . . .	.39
6AC7. . . . .	.75
6AG5. . . . .	1.15
6AL5. . . . .	.99
6AT6. . . . .	.67
6BA6. . . . .	.82
6BE6. . . . .	.82
6H6. . . . .	.45
6K6GT. . . . .	.63
6K7. . . . .	.55
6L6. . . . .	1.23
6SA7GT. . . . .	.67
6SC7. . . . .	.55
6SG7. . . . .	.82
6SJ7. . . . .	.63
6SN7GT. . . . .	.81
6SQ7GT. . . . .	.49
6V6GT. . . . .	.59
7C5. . . . .	.59
12A6. . . . .	.19
12SA7GT. . . . .	.69
12SG7. . . . .	.59
12SK7GT. . . . .	.59
12SQ7GT. . . . .	.59
14B6. . . . .	.69
35B5. . . . .	.67
35Y4. . . . .	.55
35Z5GT. . . . .	.49
50B5. . . . .	.75
50L6GT. . . . .	.69

**TWIN-TIP JACK**

High-quality twin-tip jack on laminated strip.

99G4231 10 FOR **.45**  
Each, Singly. . . . . **.05**

**4-TUBE AMPLIFIER!**



4-tube amplifier, push-pull output, for crystal pickup. Volume control, pilot light. Less tubes.

99G9608. . . . . **3.75**

Kit of tubes for above: Two 35A5, 14B6, and 35Y4 rectifier.

99G9609. . . . . **2.98**



SERVICEMEN! LOOKING FOR "SOMETHING EXTRA" IN VALUES?

# Lafayette Comes Through With Some Last-Minute "Best Buys"

**BIG BARGAINS IN RCA REPLACEMENT SPEAKERS**

**12" ONLY 4.75**



This genuine 12" RCA speaker has 6.8 oz. Alnico V magnet, 3.2 ohm impedance voice coil for long service and top-quality reception. Use it to replace a small speaker in your present radio, or for building a new one. You will hear "big-speaker" reproduction, with full clarity and brilliance.

99G7023. . . . . **4.75**

**100 W. VULCAN IRON AMAZING LOW PRICE! ONLY 1.95**



Low, low price for this Vulcan 100-watt soldering iron. Excellent for general radio work. Has high quality long life element. Extension type long lasting screw tip. Firm-grip handle. 6 foot cord, plug and stand. A true economy buy at this new low Lafayette-Concord price.

99G8005 . . . . . **1.95**

**A MUST FOR ALL TV SERVICEMEN! FM-TV SWEEP GENERATOR**



**A VERIFIED \$50 VALUE ONLY 34.95**

The FM-TV Sweep Generator and the AM Signal Generator are two of the most useful pieces of equipment used by the radio serviceman, the experimenter, and the amateur. They are manufactured for use as companion pieces and together all modulations are depicted with precision accuracy. Well made and absolutely dependable.

Newly designed model embodies the latest in engineering design, precision accuracy and simplicity of operation. Complete frequency coverage of 2 to 227 MC on 3 bands, covers entire Frequency Modulation and Television bands. Sweep width 500 KC to approximately 10MC. Dial calibrated directly in frequency, no mental calculations are necessary. Maximum output is 500,000 microvolts. Built-in power line filter. Generator output can be used either Frequency Modulated or pure RF Tubes used are 4-6C4 and 7Y4. Housed in steel cabinet finished in grey wrinkle enamel. For operation on 105-125 volts, 50-60 cycles. A.C. Shpg. Wt. 16 lbs.

25G21736 . . . . . **34.95**

AM Signal Generator. Same as above. RF 100 KC to 25 MC.

25G21738 - Shpg. Wt. 19 lbs. See page 29. . . . . **34.95**

**4x6" OVAL REPLACEMENT**



4x6" rectangular mount and 3-5/8 x 4-5/8" mtg. centers. Alnico V magnet, 3-4 ohms impedance, 3 watts normal, 4 1/2 watts peak. Less transformer.

99G7012. . . . . **1.29**  
3 FOR 3.75

**IF TRANSFORMER BUYS**



Here are two deep-cut money-savers. Notice the special quantity price on these IF transformers. Air core, condenser tuned, shielded IF. 456 KC normal peak. Standard spade mounting lugs. Size of can: 1-3/8x1-3/8 x3". Ten for \$1.70.

98G10069 Input. . . . . **.19**

98G10070 Output. . . . . **.19**

**KIT OF 100 RESISTORS**



You can be ahead with this exceptional resistor value. Made up for the radio serviceman, experimenter and the amateur. The kit contains 100 assorted popular resistor sizes with wattage ratings from 1/2 to 2 watts.

99G155 . . . . . **.69**

**Mallory 20x20 - 150 V At A Give-Away Price**



In waxed cardboard tubes with an adjustable strap for horizontal mounting. Insulated leads. 20-20 mfd, 150 v.

99G3224. . . . . **.29**  
10 FOR 2.70 100 FOR 25.00



**25 PAPER TUBULARS.**

25 top quality tubular condensers at a real bargain price. Wax impregnated, non-inductivity wound. From .002 mfd. to .5 mfd. Long flexible pigtail leads. Individually tested to meet RMA standards.

99G278 - Shpg. Wt. 1 1/2 lbs. . . . . **.97**



**25 CERAMICONS**

Kit of 25 most popular sizes. All these condensers are color coded. Flexible pigtail leads. Low cost saves you money. Shpg Wt 1 lb.

99G279 . . . . . **.69**

**MIDGET ELECTROLYTIC CONDENSERS**

Bare wire lead midget electrolytics. Hermetically sealed. Spade mounting lugs. Polarity indicated. Stock up now!

Stk. No.	Cap. Mfd.	DC WV	Size	Lots of 10	Each
99G3220	8	450		2.50	27¢
99G3222	16	450	7/8 x 3"	2.70	29¢
99G3223	20	150		1.70	19¢
99G3226	50-30	150	1-1/16 x 3"	3.50	39¢

*Lafayette Concord*  
100 SIXTH AVENUE, NEW YORK 13  
Return Postage Guaranteed

APR 11 1954  
R1548  
RADIO BUILDER  
1516 S 18TH ST  
TERRE HAUTE  
IND

Sec. 562, P. L. & R.  
U. S. POSTAGE  
**PAID**  
New York, N. Y.  
Permit No. 8486

Postmaster: If addressee has moved and new address is known, notify sender on FORM 3547, postage for which is guaranteed. In case of removal to another Post Office do not notify the addressee but hold the matter and state on FORM 3547 amount of forwarding postage required which sender will promptly furnish.